

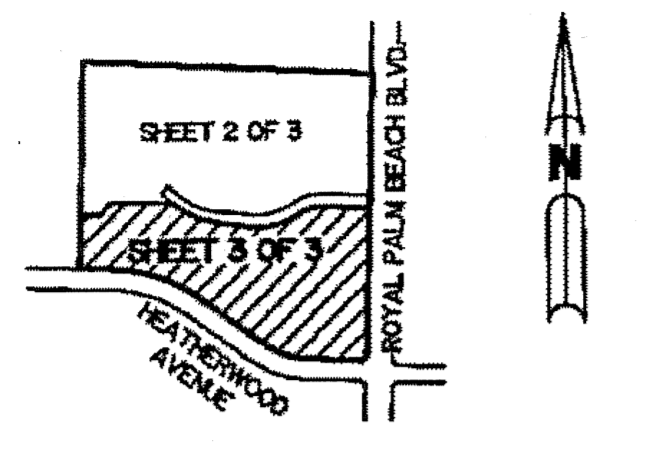
(A P.U.D.)

STAMFORD AT ROYAL PALM BEACH

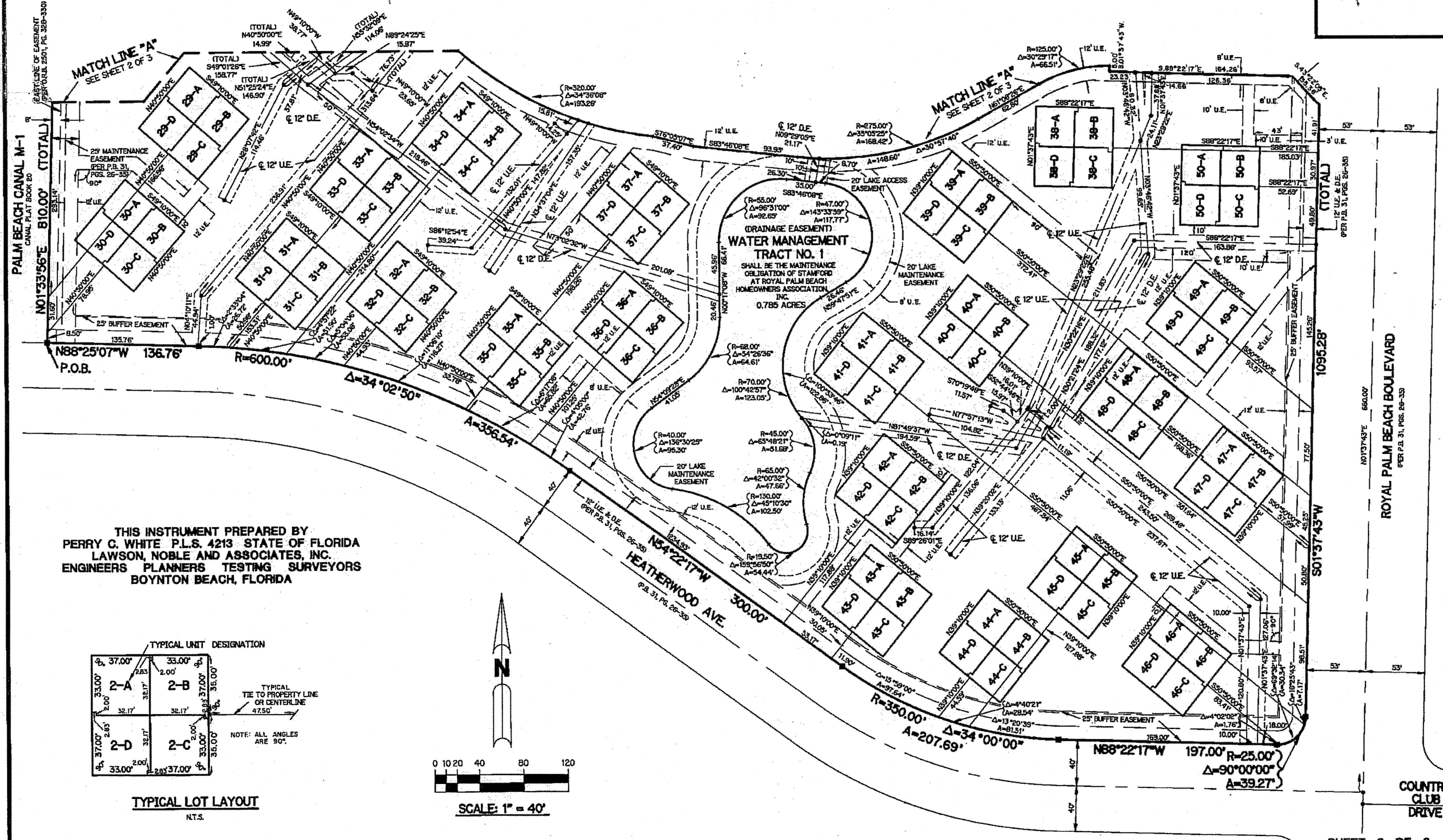
A REPLAT OF A PORTION OF TRACT "F" ACCORDING TO THE PLAT OF HAWTHORN II AS RECORDED IN PLAT BOOK 31, PAGES 26 THROUGH 35 INCLUSIVE, OF THE PUBLIC RECORDS OF PALM BEACH COUNTY, FLORIDA. SECTION 23, TOWNSHIP 43 SOUTH, RANGE 41 EAST

SHEET 3 OF 3

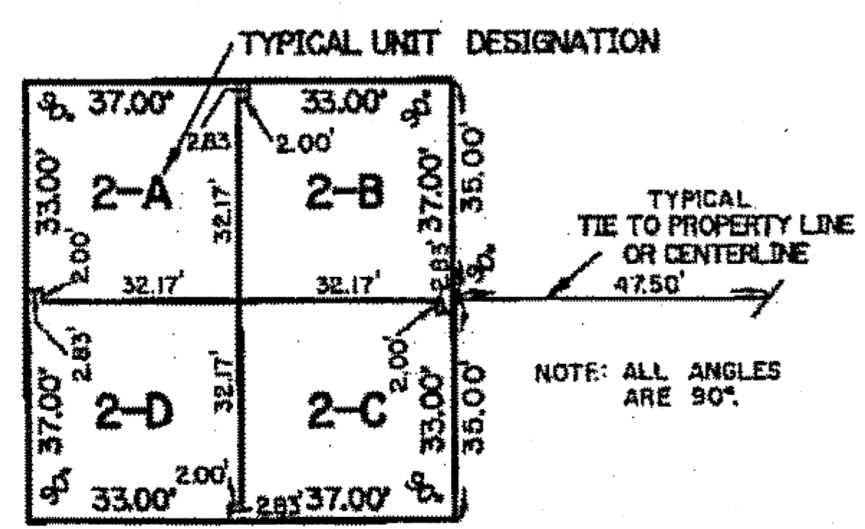
JANUARY, 1988



KEY MAP
NT.S.



THIS INSTRUMENT PREPARED BY
PERRY C. WHITE P.L.S. 4213 STATE OF FLORIDA
LAWSON, NOBLE AND ASSOCIATES, INC.
ENGINEERS PLANNERS TESTING SURVEYORS
BOYNTON BEACH, FLORIDA



TYPICAL LOT LAYOUT
NT.S.

