

LANTANA HOMES PLAT 8

A PLANNED UNIT DEVELOPMENT

PALM BEACH COUNTY, FLORIDA

SHEET 2 OF 2

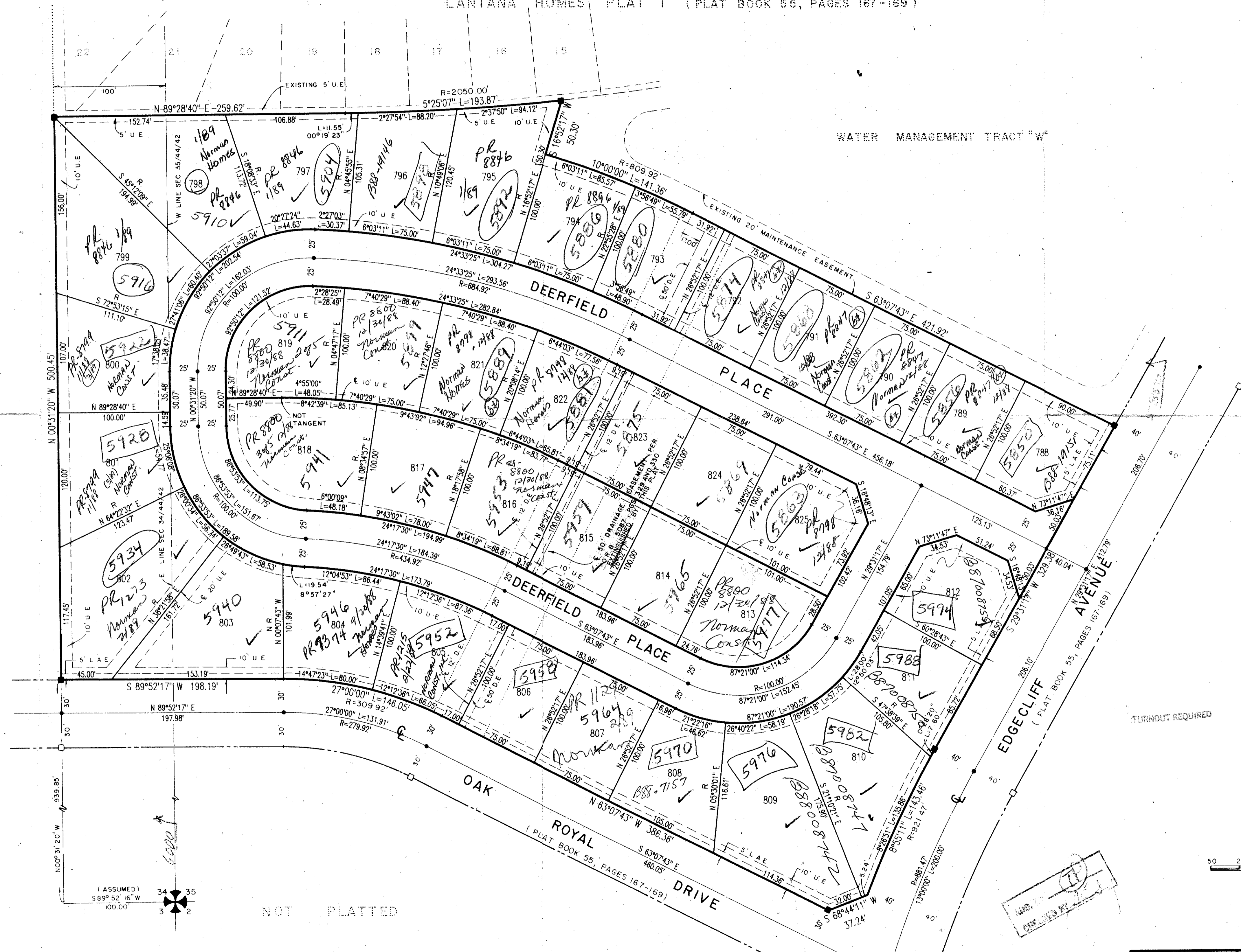
JULY, 1988.

105

STATE OF FLORIDA
COUNTY OF PALM BEACH
This Plat was filed for record at _____
M. this _____ day of _____, 19____
and duly recorded in Plat Book No. _____
on Page _____
John B. Dunkle, Clerk of the Circuit Court
By _____ D.C.

LANTANA HOMES PLAT 1 (PLAT BOOK 55, PAGES 167-169)

HOMES OF LEE'S CROSSING PLAT 8
(PLAT BOOK 55, PAGES 6-9)



NOT PLATTED

NOTE:

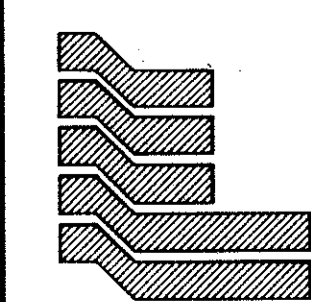
□ TYPICALLY DENOTES P R M LOCATIONS PER LANTANA HOMES PLAT 1, PLAT BOOK 55, PAGES 167-169

GRAPHIC SCALE 1"=50'

0421-007

Plat 84-61

60/105



Landmark Surveying & Mapping Inc.
1850 FOREST HILL BOULEVARD
PH. (305)433-5405 SUITE 200 W.P.B. FLORIDA

LANTANA HOMES PLAT 8