

# PALM BEACH POLO EQUESTRIAN CLUB PLAT NO. 1 OF WELLINGTON COUNTRYPLACE, P.U.D.

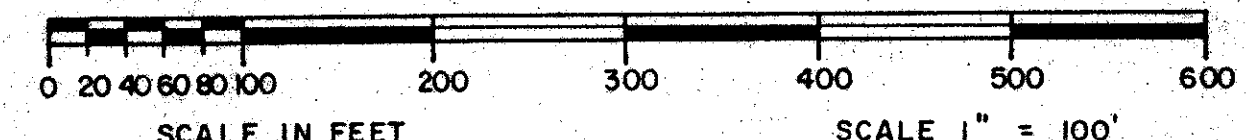
LYING IN LANDS FORMERLY PLATTED AS CHUKKER HILL OF WELLINGTON COUNTRYPLACE - P.U.D.  
IN PLAT BOOK 40, PAGES 44 - 46 AND ABANDONED PER O.R.B. 5247, PAGE 393

PUBLIC RECORDS OF PALM BEACH COUNTY

IN PART OF SECTION 20, TOWNSHIP 44 SOUTH, RANGE 41 EAST, PALM BEACH COUNTY, FLORIDA.

SHEET NO. 2 OF 2 SHEETS

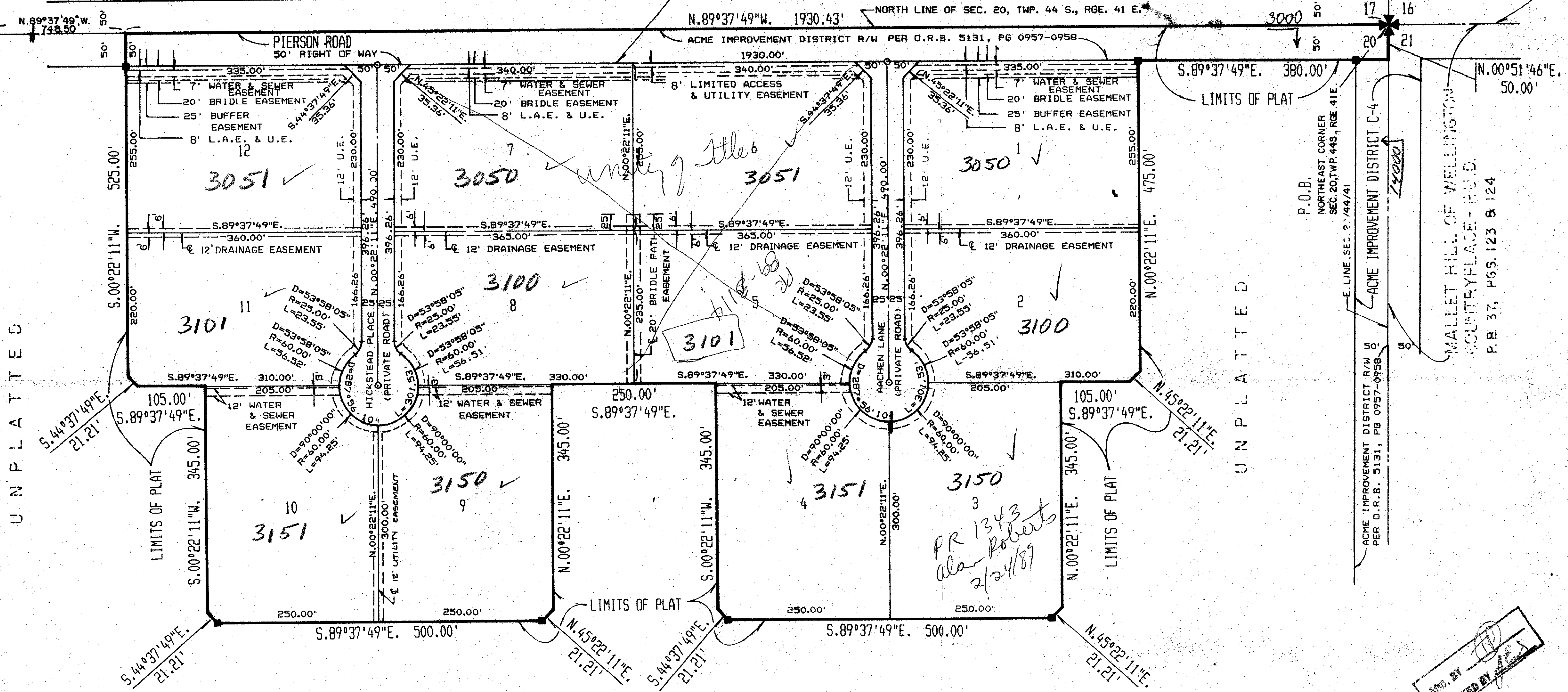
MARCH 1988



SADDLE TRAIL PARK OF WELLINGTON - P.U.D. UNPLATTED  
P.B. 41, PGS. 103-105

GREENVIEW SHORES NO. 2  
OF WELLINGTON - (P.U.D.)  
P.B. 31, PGS. 120-126  
PARCEL H

ACME IMPROVEMENT DISTRICT C-23



UNPLATTED

UNPLATTED

UNPLATTED

2/27/88  
SUBDIVISION # P.B. 6 Equestrian Club #1  
DATE 1/14/88  
PAGE 144  
WELLINGTON COUNTY PLANNING DEPT.  
TAZ 728  
JL to 1/13/88

APP. BY [Signature]  
CHECKED BY [Signature]

No. 60  
Pet. 86-52

60/144

SCALE: 1" = 100'	NICK MILLER, INC.	DRAWN BY:
DATE: MARCH 1988	Planning & Development Consultants	
PALM BEACH POLO EQUESTRIAN CLUB PLAT NO. 1, WELLINGTON COUNTRYPLACE - P.U.D.		
2580 RCA Blvd. # 400-105 Palm Beach Gardens, Florida 33410 (305) 627-5200		DRAWING NUMBER 00-0003A