

# A PART OF LAKE CHARLESTON PLANNED UNIT DEVELOPMENT

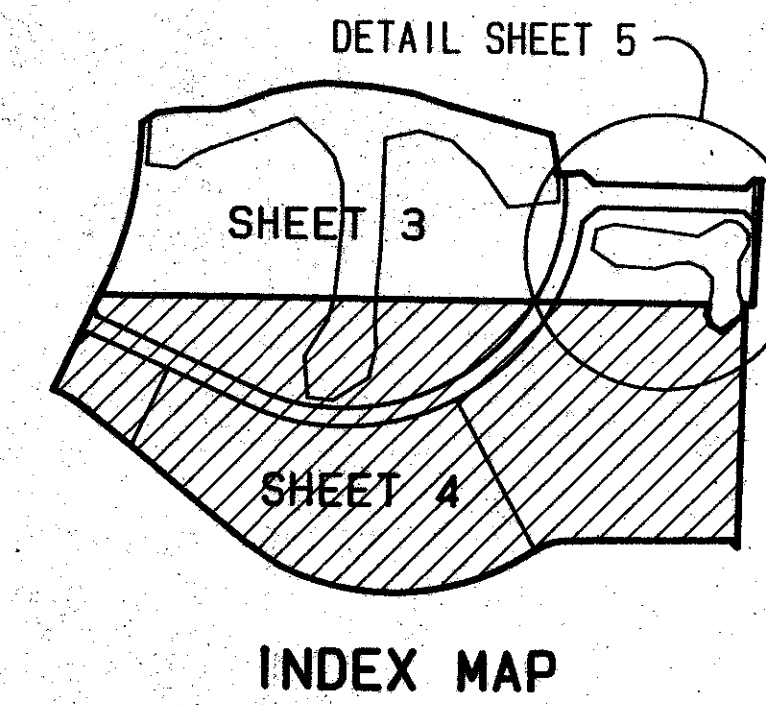
# LAKE CHARLESTON PLAT NO. 1

BEING A REPLAT OF ALL OF LOTS 30-33 AND 37-43 AND A PART OF LOTS 21-26, 28 & 29, 34-36, 44 & 45, 47-54, AND A PART OF THE ABANDONED 30 FOOT ROADWAY SOUTH OF LOTS 28-36, ALL IN BLOCK 40 AND A PART OF THE AREAS EAST OF LOTS 36, 37 AND 54 OF BLOCK 40, ALL IN PALM BEACH FARMS CO. PLAT NO. 3 (PLAT BOOK 2 PAGES 45-54) AND IN

SECTIONS 9 AND 10, T. 45 S., R. 42 E., PALM BEACH COUNTY, FLORIDA  
IN 5 SHEETS

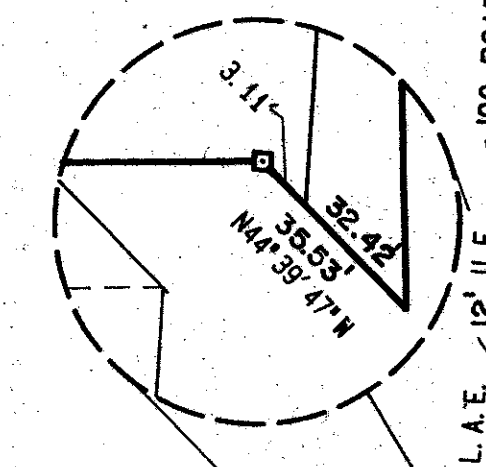
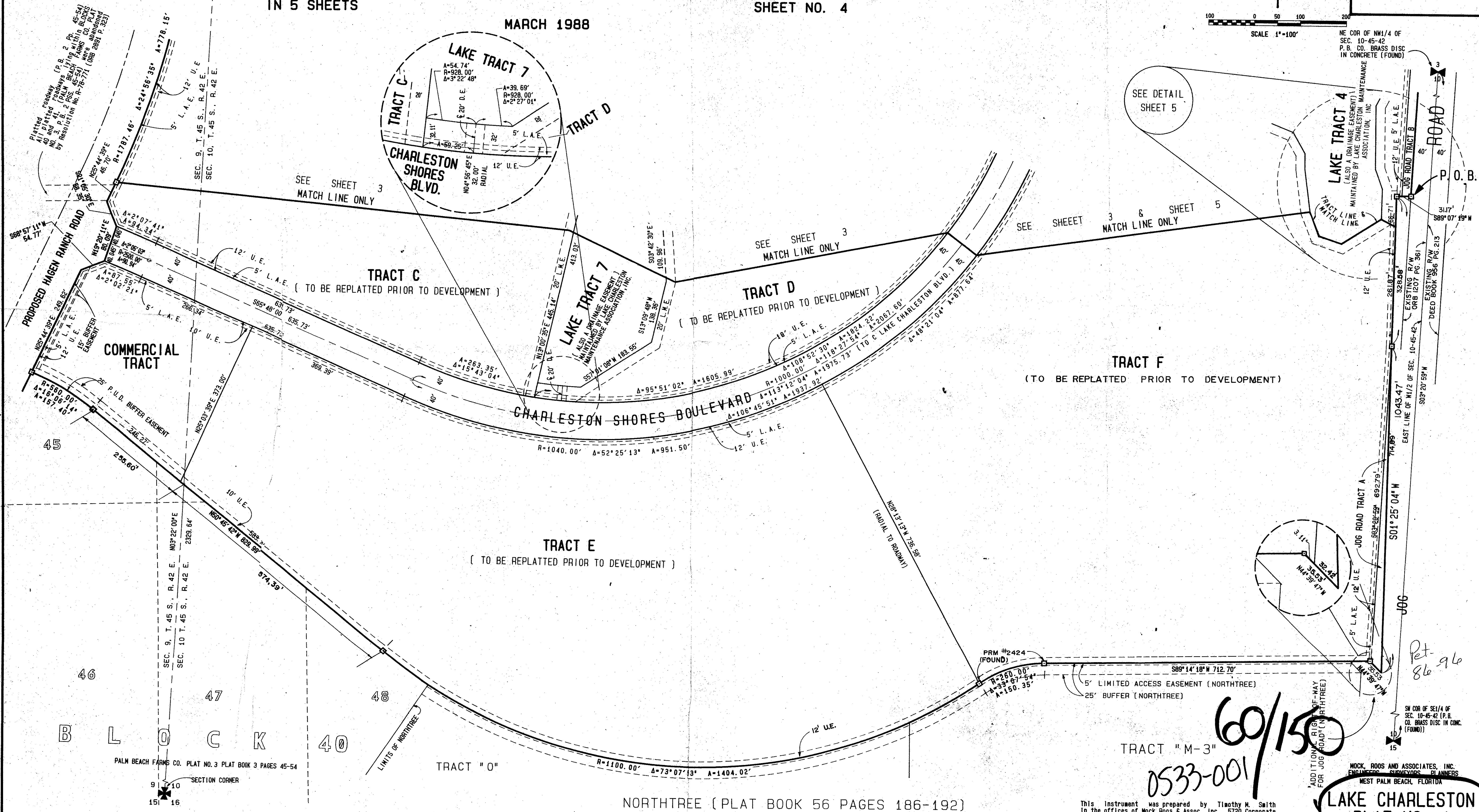
MARCH 1988

SHEET NO. 4



SCALE 1"=100'

NE COR OF NW 1/4 OF SEC. 10-45-42  
P. B. CO. BRASS DISC IN CONCRETE (FOUND)



60/150

0533-001

SUBDIVISION - Lake Charleston  
 BLOCK 40  
 PLAT NO. 1  
 DATE 2/28/88  
 BY [Signature]  
 FOR [Signature]

SW COR OF SE 1/4 OF SEC. 10-45-42 (P. B. CO. BRASS DISC IN CONC. (FOUND))

MOCK, ROOS AND ASSOCIATES, INC.  
ENGINEERS, SURVEYORS, PLANNERS  
WEST PALM BEACH, FLORIDA

LAKE CHARLESTON  
PLAT NO. 1

This instrument was prepared by Timothy M. Smith in the offices of Mock, Roos & Assoc., Inc., 5720 Corporate Way, West Palm Beach, Florida 33407. (407 883-3113)

NORTHTREE (PLAT BOOK 56 PAGES 186-192)