

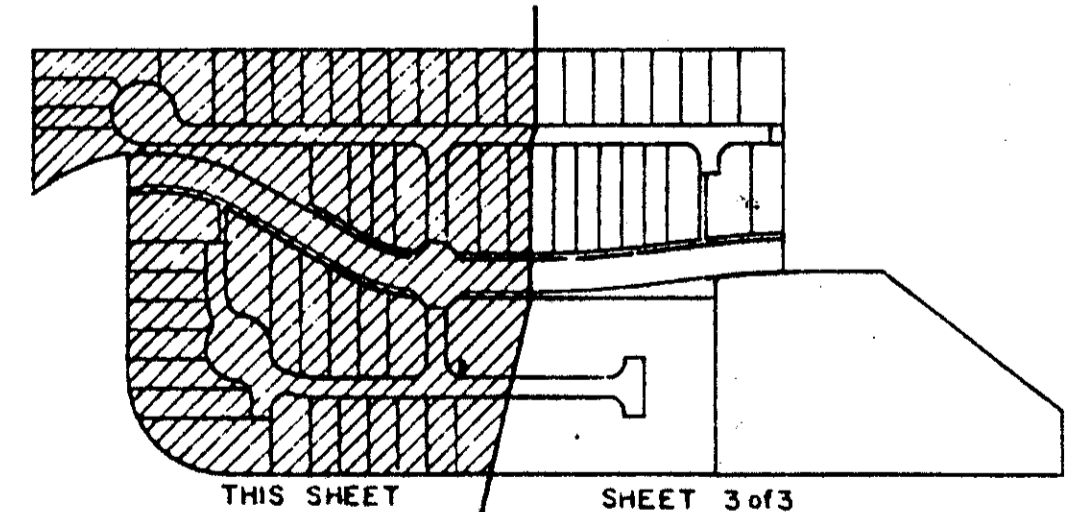
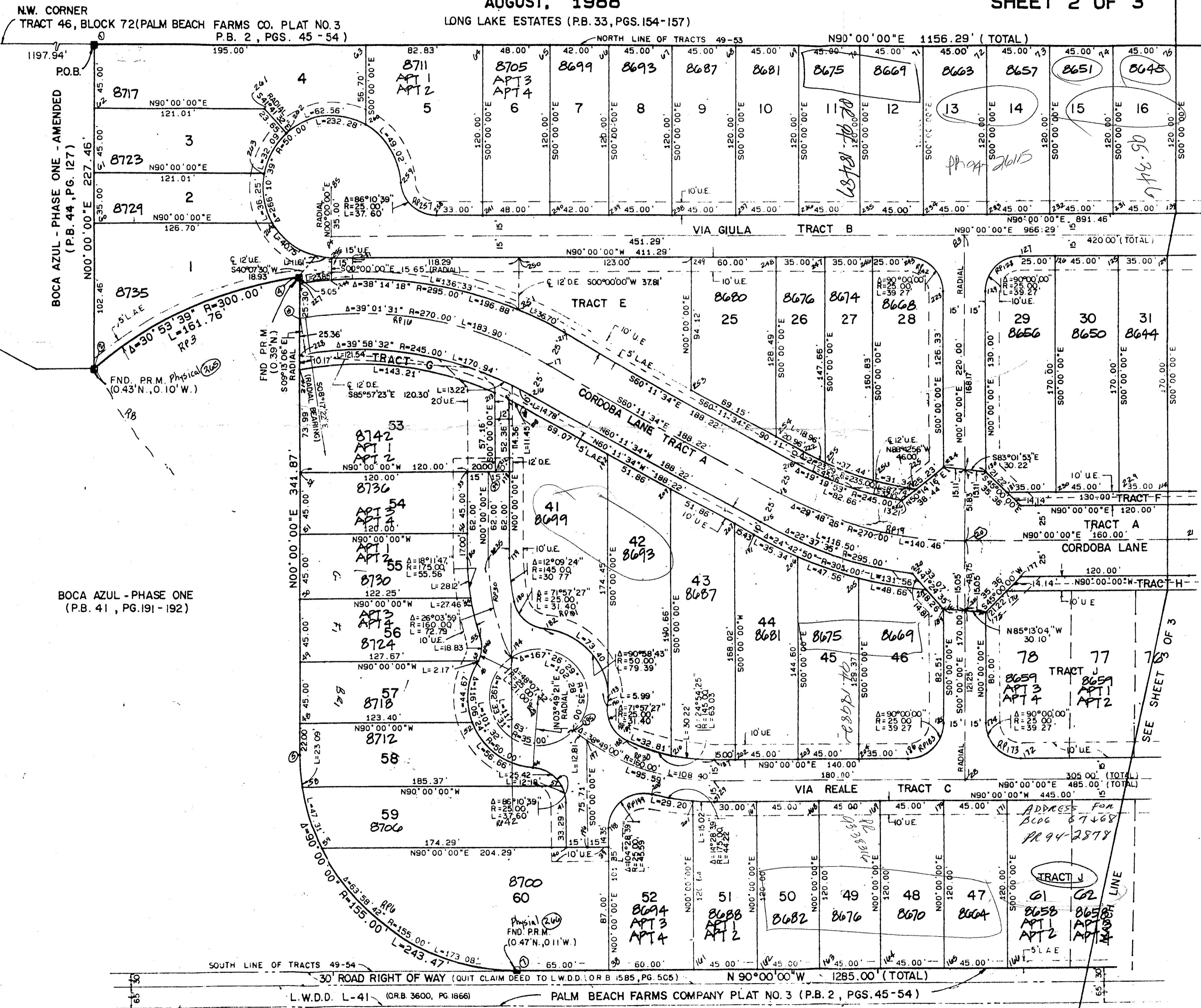
BOCA AZUL - PHASE TWO

A REPLAT OF TRACTS 51 AND 52, AND P/O TRACTS 49, 50, 53, AND 54 OF BLOCK 72, PALM BEACH FARMS COMPANY PLAT NO. 3, (P.B.2, PG.45-54) SITUATE IN SECTION 5, TOWNSHIP 47 SOUTH, RANGE 42 EAST PALM BEACH COUNTY, FLORIDA

AUGUST, 1988

SHEET 2 OF 3

STATE OF FLORIDA
COUNTY OF PALM BEACH
THIS PLAT WAS FILED FOR RECORD THIS DAY OF AD, 1988 AND DULY RECORDED IN PLAT BOOK ON PAGES AND
JOHN B. DUNKLE, CLERK BY: , D.C.



SHEET INDEX MAP
1" = 300'

STANLEY/WANTMAN, INC.
2000 LOMBARD STREET, WEST PALM BEACH, FL 33407 (305) 842-7444

DRAWN	D.M.W.	DATE	Feb. 1988
CHECKED	W.B.H.	SCALE	1" = 40'
DRAWING NO.	09513PL2		

BOCA AZUL - PHASE TWO