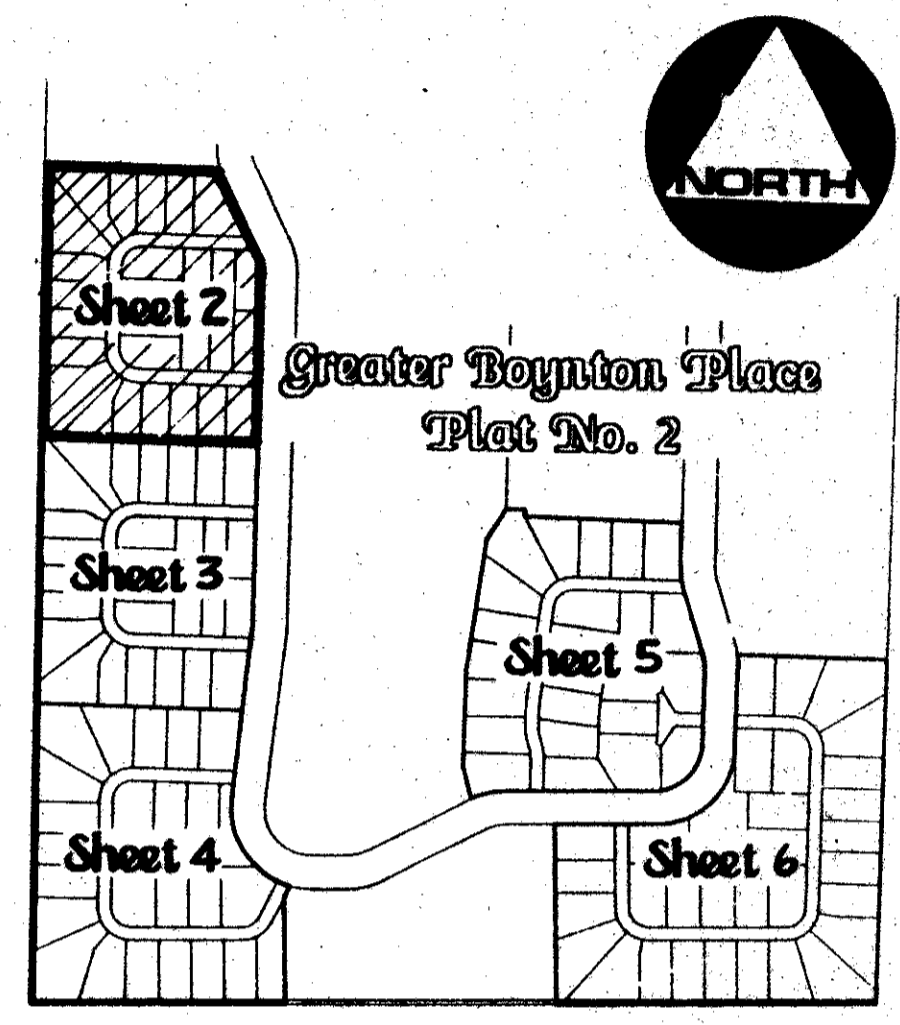
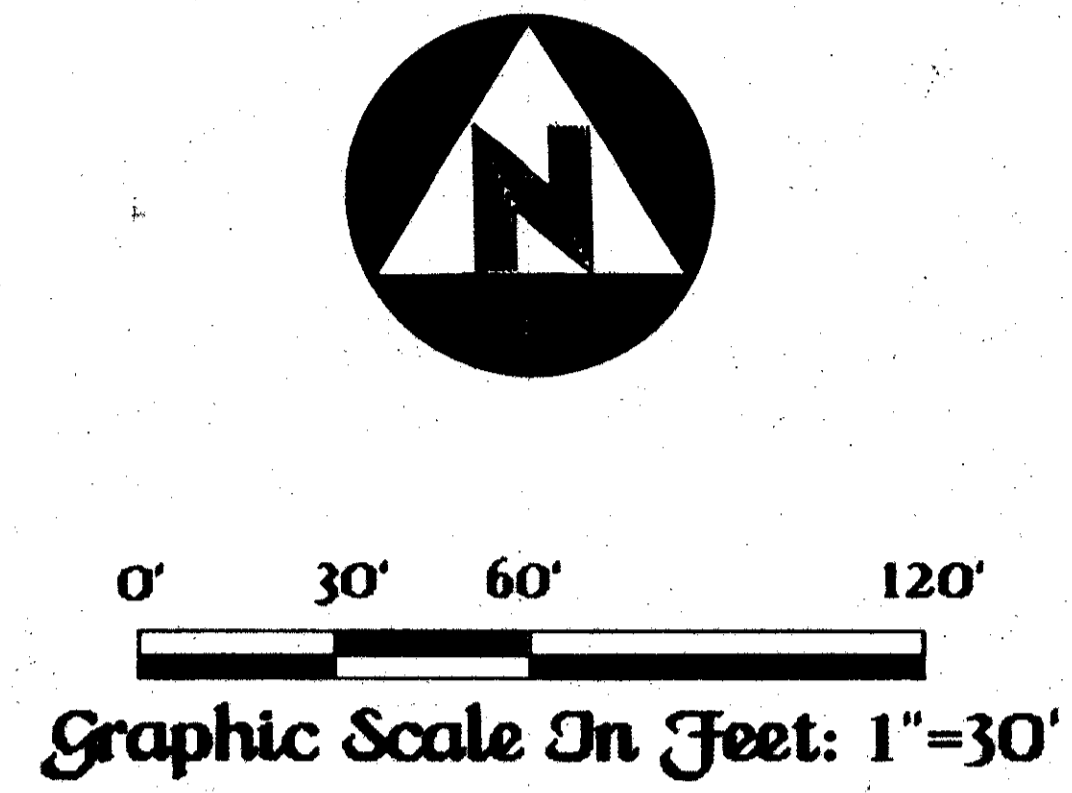
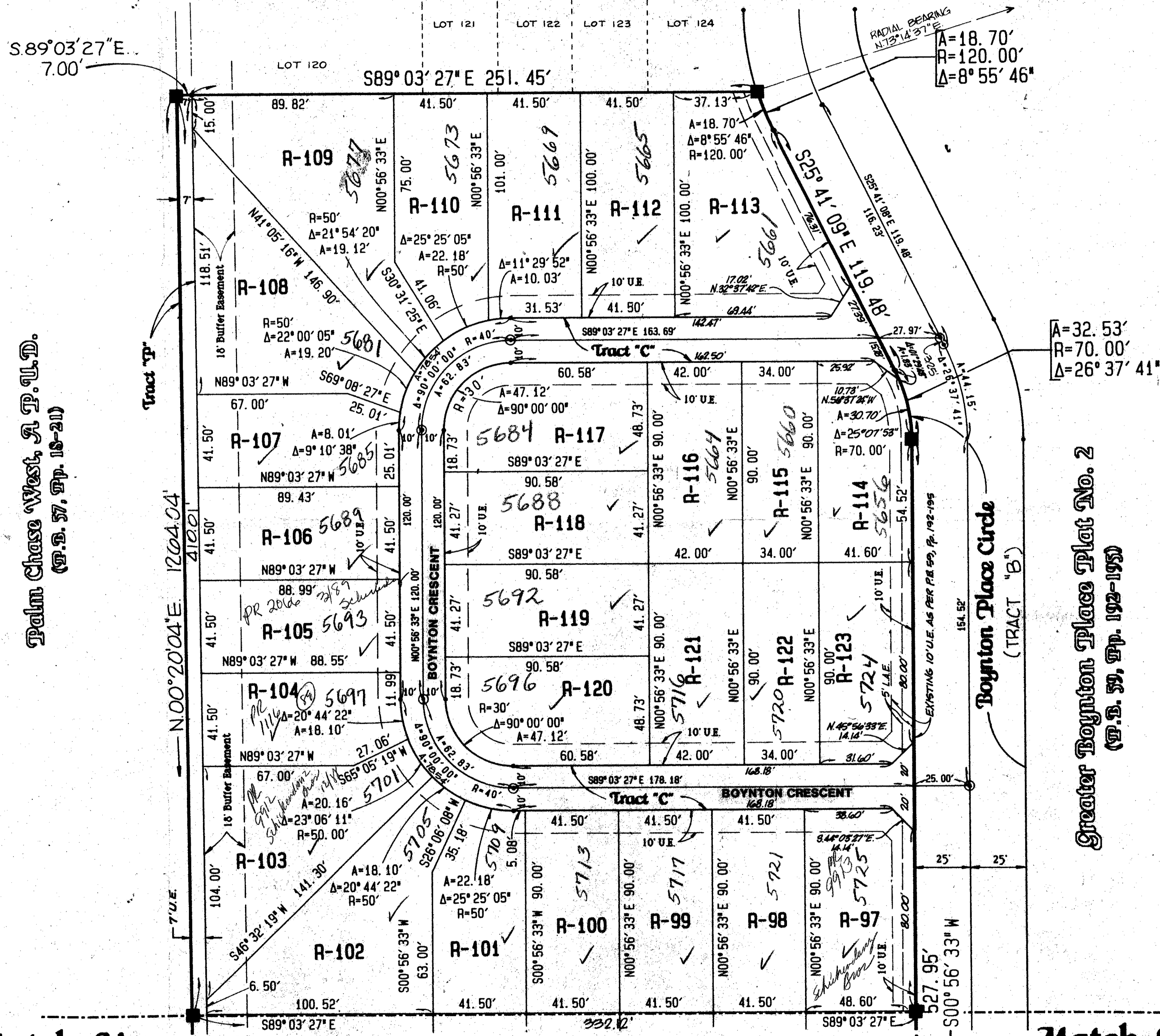


# -Greater Boynton Place Plat No. 3-

# 191

State Of Florida )  
 ) SS  
 County Of Palm Beach )  
 This Plat was filed for record at  
 this day of \_\_\_\_\_  
 A.D. 1988, and duly recorded in  
 Plat Book \_\_\_\_\_ on  
 Pages \_\_\_\_\_ through \_\_\_\_\_  
 John B. Dunkle,  
 Clerk of the Circuit Court.  
 By: \_\_\_\_\_ Deputy Clerk

Greater Boynton Place Plat No. 2  
 (P.D. 59, Pp. 192-195)



Palm Chase West, A.P.U.D.  
 (P.D. 57, Pp. 18-21)

Greater Boynton Place Plat No. 2  
 (P.D. 59, Pp. 192-195)

-Match Line-  
 See Sheet 3 Of 6

-Match Line-  
 See Sheet 3 Of 6

Note:  
 Lot lines and/or boundary lines which intersect a curve are not radial to said curve unless otherwise noted.

Greater Boynton Place  
 BOOK 66 PAGE 191  
 FLOOD MAP #15.6  
 ZONING  
 ZIP CODE 33436  
 PUB. MAP - Saw Valley

60/191  
 0498-006  
 This instrument was prepared by Wm. R. Van Campen, R.L.S., in and for the offices of Bench Mark Land Surveying & Mapping, Inc., 4152 W. Blue Heron Boulevard, Suite 121, Riviera Beach, FL.

- Legend:
- Indicates A Permanent Reference Monument \* 2424 (P.R.M.)
  - Indicates A Permanent Control Point \* 2424 (P.C.P.)
  - D.E. Indicates A Drainage Easement
  - U.E. Indicates A Utility Easement
  - L.M.E. Indicates A Lake Maintenance Easement

BENCH MARK  
 LAND SURVEYING & MAPPING, INC.  
 4152 W. BLUE HERON BOULEVARD, SUITE 121, RIVIERA BEACH, FL. 33406

Record Plat  
 Greater Boynton Place  
 Plat No. 3

|      |          |          |    |
|------|----------|----------|----|
| DATE | APPROVED | FILE NO. | 26 |
|------|----------|----------|----|