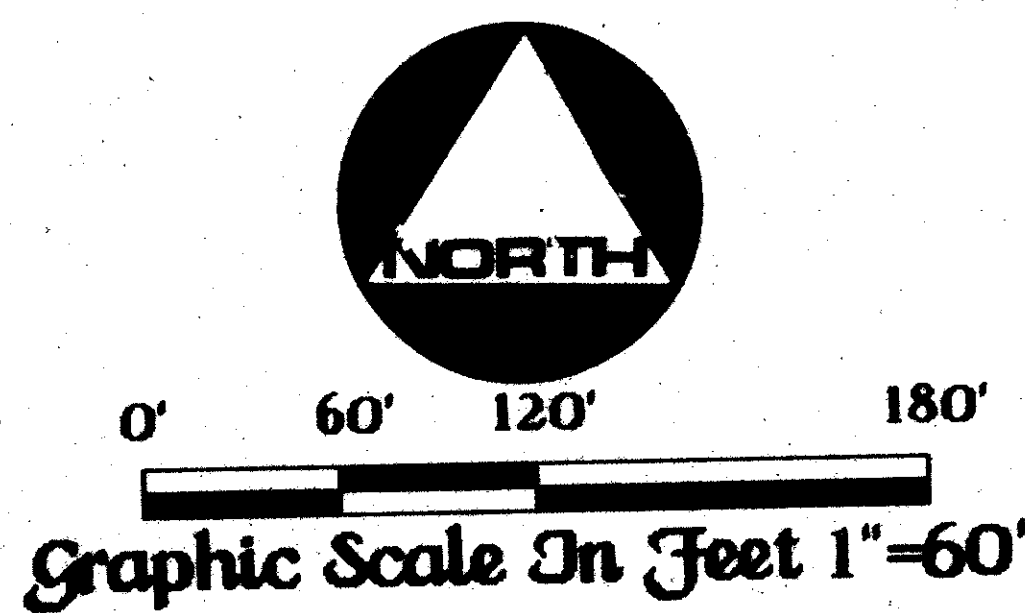


-Stonewal Estates Plat No. 2-

April A.D., Nineteen Hundred Eighty Eight

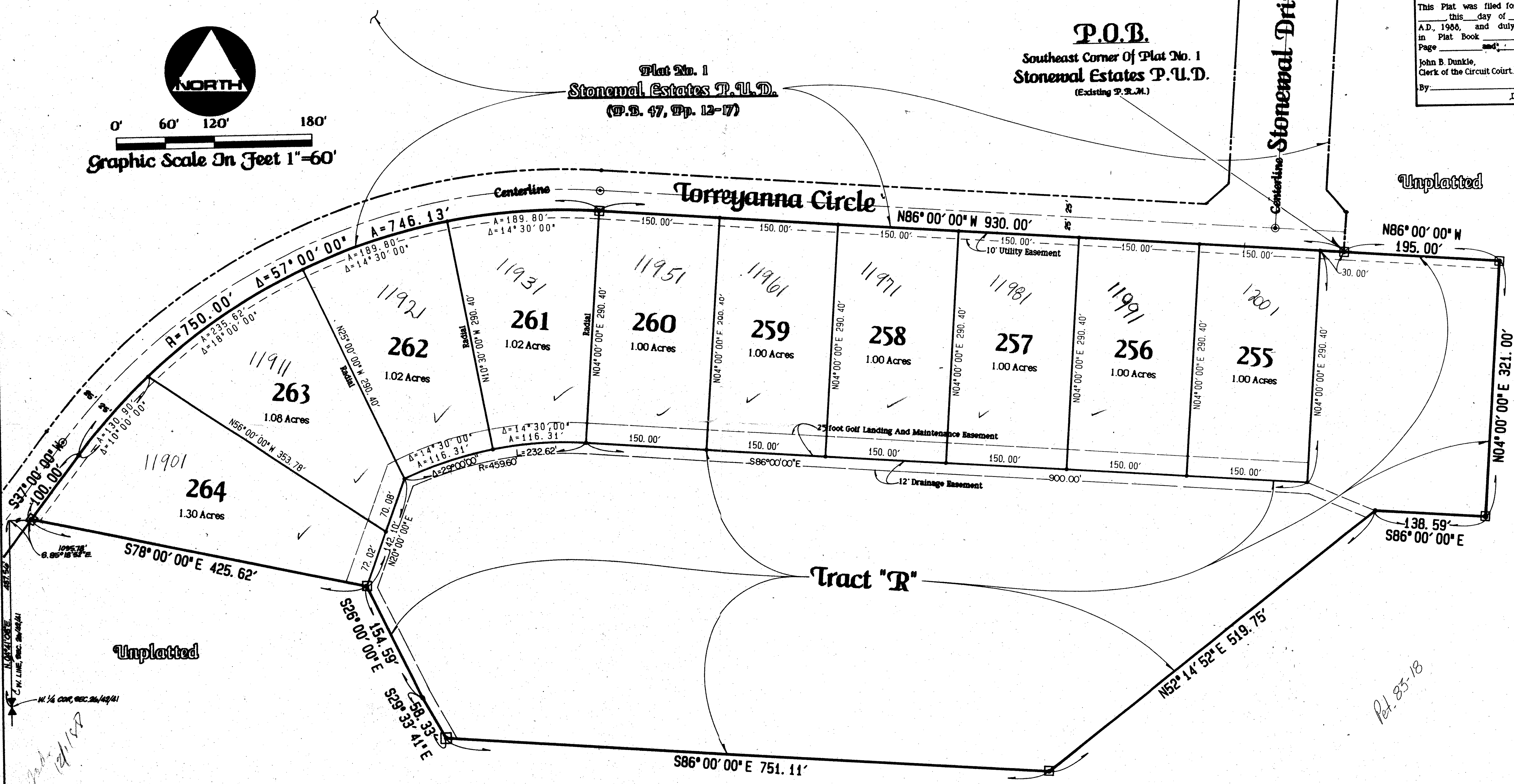
Sheet Two Of Two



Plat No. 1
Stonewal Estates P.U.D.
(P.D. 47, Pp. 12-17)

P.O.B.
Southeast Corner Of Plat No. 1
Stonewal Estates P.U.D.
(Existing P.R.M.)

State Of Florida)
County Of Palm Beach)
This Plat was filed for record at
this day of _____
A.D., 1988, and duly recorded
in Plat Book _____ on
Page _____ and _____
John B. Dunkle,
Clerk of the Circuit Court.
By _____ Deputy Clerk



DIVISION: Stonewal Estates #2
PAGE: 3
TO: ZONE B FLOOD MAP #50A
DATE: 4/29/88
ZONING: R1P CODE 33412
T. NAME:

Legend:
□ Indicates A Permanent Reference Monument # 2424 (P.R.M.)
○ Indicates A Permanent Control Point # 2424 (P.C.P.) FOUND

REC'D BY
APPROVED BY
6/1/88
4

This instrument was prepared by Wm. R. Van Campen, R.L.S., in
and for the offices of Bench Mark Land Surveying & Mapping, Inc.,
4152 W. Blue Heron Boulevard, Suite 121, Riviera Beach, FL.

BENCH MARK
LAND SURVEYING & MAPPING, INC.
MIAMI BEACH, FLORIDA

-Record Plat-
Stonewal Estates Plat No. 2

OWN P.D. _____ DATE 4/22/88 W.D. NO. 5820
SCALE 1"=60' SIZE L _____ SHEET 2 OF 2