

Fisherman's Wharf

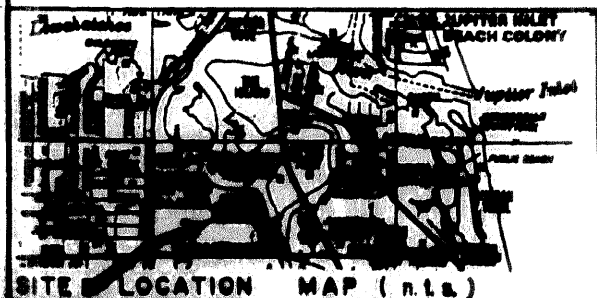
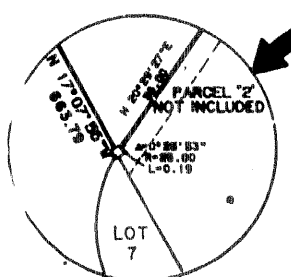
A PLAT OF
PHASE II

APRIL, 1988 Lying in GOV'T LOT 3, SEC. 6, TWP. 41 S, RGE 43 E SHEET 2 OF 2
 TOWN OF PALM BEACH COUNTY, FLORIDA

BEARING BASE:
 THE SOUTH LINE OF GOVERNMENT LOT 3, SECTION 6, TOWNSHIP 41 SOUTH, RANGE 43 EAST, IS TAKEN TO BEAR N 89°56'56" W AND ALL OTHER BEARINGS ARE RELATIVE THERETO.

- = PERMANENT REFERENCE MONUMENT (P.R.M.) FOUND #959
 - = PERMANENT REFERENCE MONUMENTS (P.R.M.) SET
 - = PERMANENT CONTROL POINT (P.C.P.)
 - D.E. = DRAINAGE EASEMENT
 - A.E. = ACCESS EASEMENT
 - L.A.E. = LIMITED ACCESS EASEMENT
- THERE MAY BE ADDITIONAL RESTRICTIONS THAT ARE NOT RECORDED ON THIS PLAT THAT MAY BE FOUND IN THE PUBLIC RECORDS OF PALM BEACH COUNTY, FLORIDA

NO BUILDING PERMITS SHALL BE ISSUED FOR LOTS 1 THRU 6 UNTIL M.S.A. 605 AS RECORDED IN P.B. 523 PG. 340 PUBLIC RECORDS PALM BEACH COUNTY, FLORIDA HAS BEEN RELEASED.



THIS PLAT PREPARED BY THOMAS C. VONKOW, P.L.S.
 FOR LINDAHL, BRUNING, FERRARI & HELLSTROM, INC.
 310 JUPITER A BOULEVARD
 SUITE 200, SUITE 104
 JUPITER, FLORIDA 33458

P.B. 3, PG. 64
 MAP 51300-2501

LINDAHL, BRUNING, FERRARI & HELLSTROM
 Consulting Engineers, Planners & Surveyors
 16 CENTRAL PARKWAY
 SUITE 104
 JUPITER, FL 33458