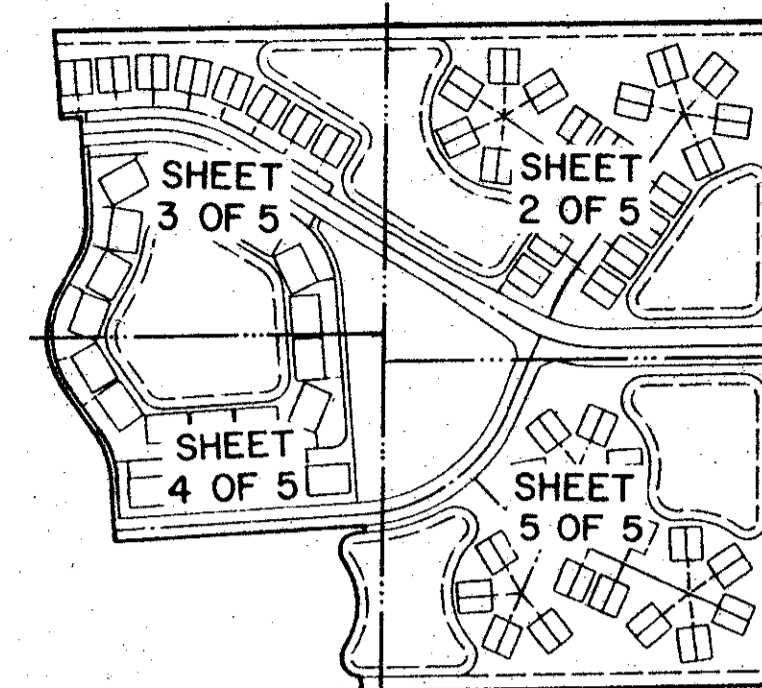
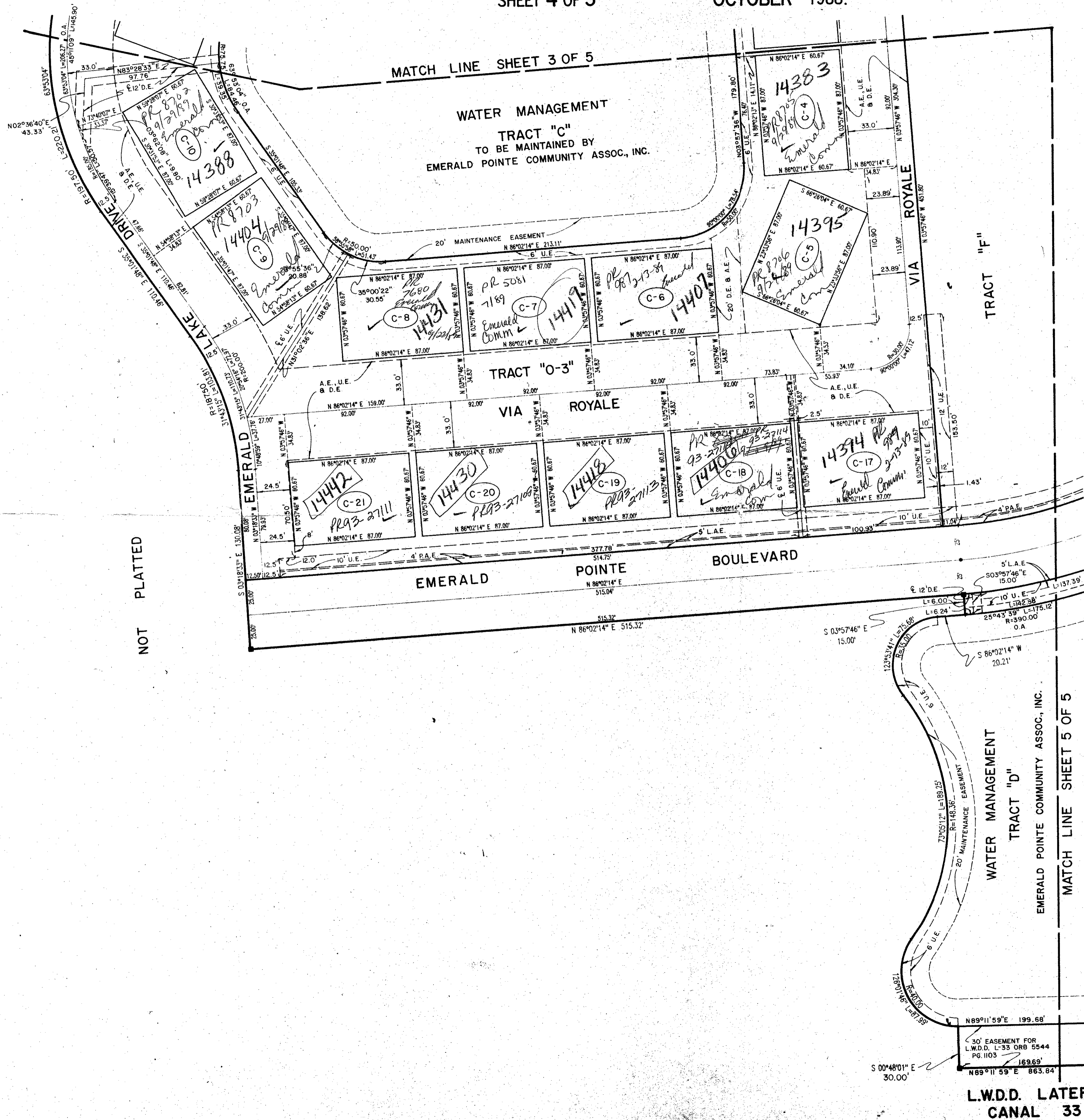


EMERALD POINTE PLAT NO. 1

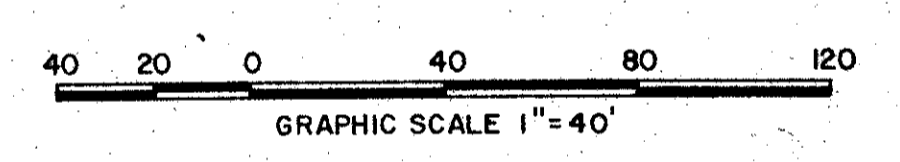
A PART OF A PLANNED UNIT DEVELOPMENT
LYING IN SECTION 16, TOWNSHIP 46 SOUTH, RANGE 42 EAST,
PALM BEACH COUNTY, FLORIDA.

SHEET 4 OF 5 OCTOBER 1988.



KEY MAP

STATE OF FLORIDA
 COUNTY OF PALM BEACH
 This Plat was filed for record at _____
 on Page _____
 and duly recorded in Plat Book No. _____
 on Page _____
 John B. Dunkle, Clerk of the Circuit Court
 By _____ D.C.



NOT PLATTED

61 Emerald Pointe
 TAZ 467
 RS-84-119
 53000
 12/1/88

Pet. 84-119

AND BY [Signature]
 CHECKED BY [Signature]

61/23

L.W.D.D. LATERAL CANAL 33

Landmark Surveying & Mapping Inc.
 1850 FOREST HILL BOULEVARD
 PH. (305)433-5405 SUITE 200 W.P.B. FLORIDA

EMERALD POINTE PLAT NO. 1