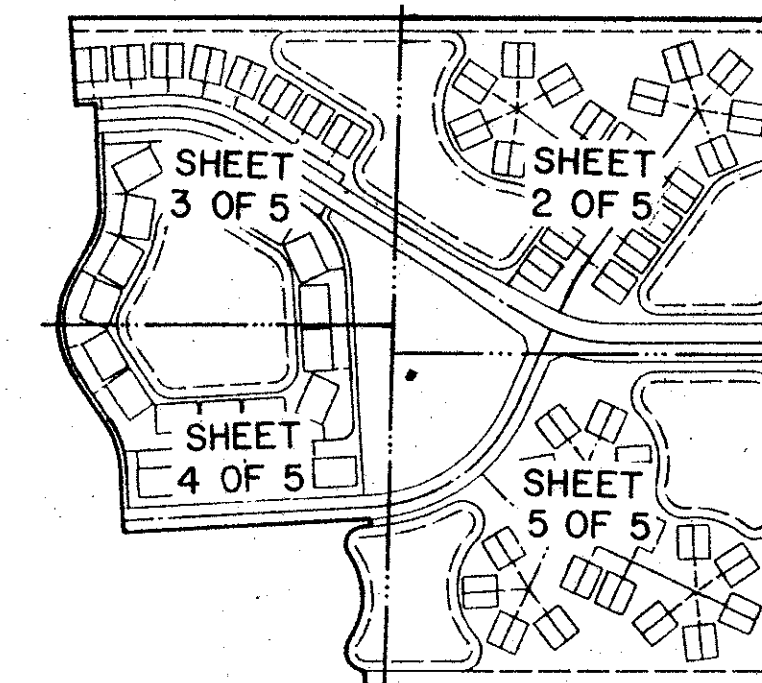


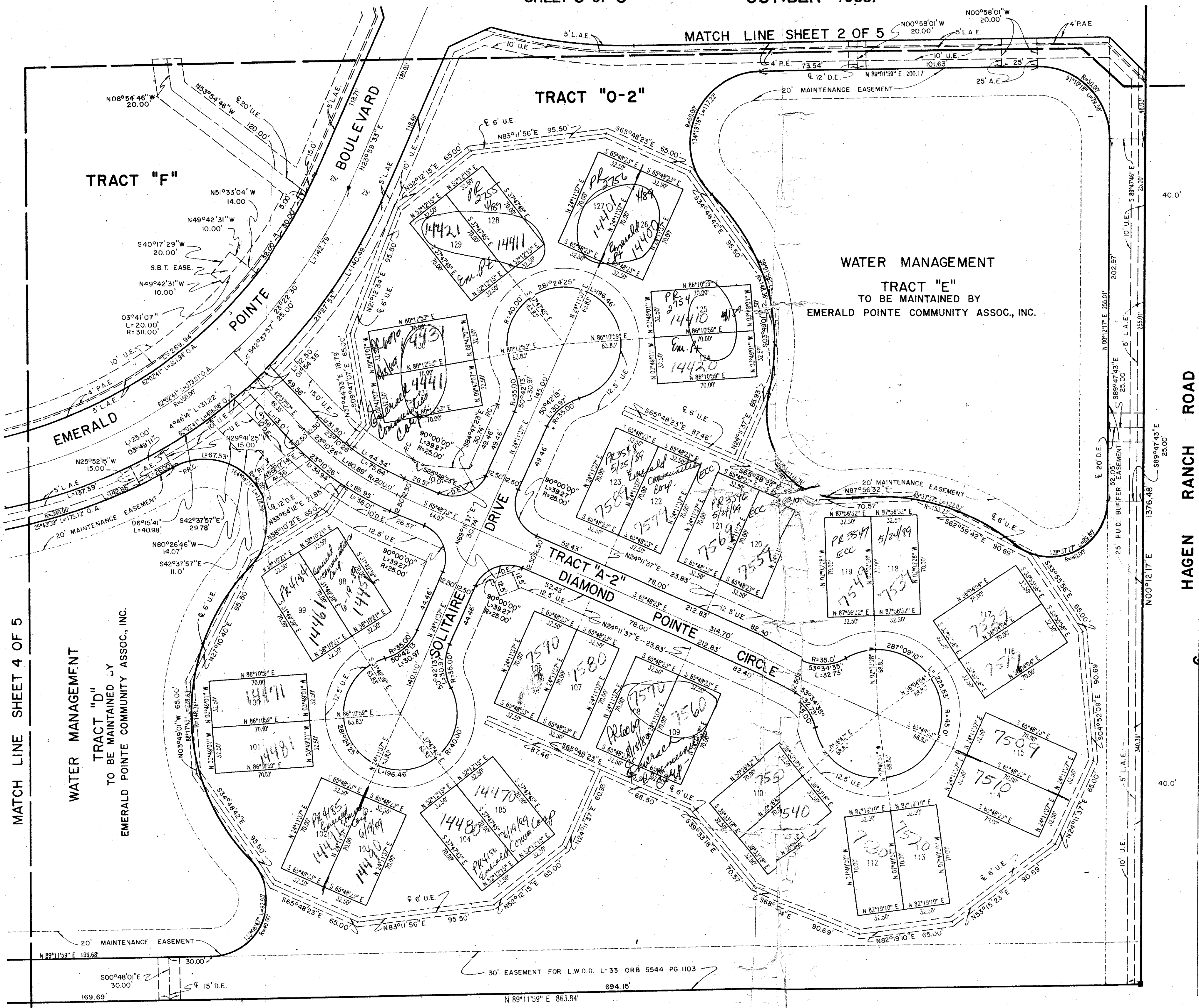
EMERALD POINTE PLAT NO. 1

A PART OF A PLANNED UNIT DEVELOPMENT
 LYING IN SECTION 16, TOWNSHIP 46 SOUTH, RANGE 42 EAST,
 PALM BEACH COUNTY, FLORIDA.
 SHEET 5 OF 5 OCTOBER 1988.

24

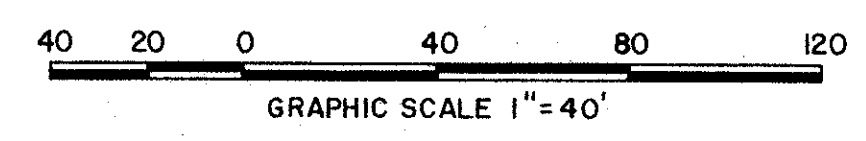


STATE OF FLORIDA
 COUNTY OF PALM BEACH ss
 This Plat was filed for record at
 .M. this ____ day of ____ 19____
 and duly recorded in Plat Book No. ____
 on Page ____
 John B. Dunkle, Clerk of the Circuit Court
 By ____ D.C.



KEY MAP

BASELINE & CENTERLINE OF HAGEN RANCH ROAD R/W
 AS PER RIGHT OF WAY MAP PREPARED BY PALM BEACH
 COUNTY ENGINEERING DEPT., DATED 10-16-56, DWG.
 NO. 3-56-027, SHEETS 1 OF 8 THROUGH 8 OF 8,
 INCLUSIVE, ENTITLED HAGEN ROAD.



MATCH LINE SHEET 4 OF 5

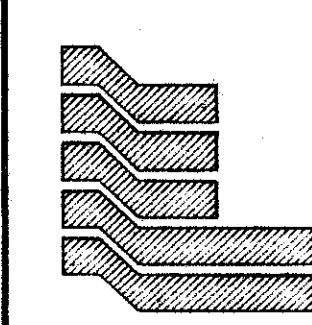
WATER MANAGEMENT
 TRACT "D"
 TO BE MAINTAINED BY
 EMERALD POINTE COMMUNITY ASSOC., INC.

WATER MANAGEMENT
 TRACT "E"
 TO BE MAINTAINED BY
 EMERALD POINTE COMMUNITY ASSOC., INC.

L.W.D.D. LATERAL CANAL 33

Handwritten notes:
 AS-84-119
 3/11/88
 TAZ 467
 14500

AND BY
 CHECKED BY



Landmark Surveying & Mapping Inc.
 1850 FOREST HILL BOULEVARD
 PH. (305)433-5405 SUITE 200 W.P.B. FLORIDA

EMERALD POINTE PLAT NO. 1