

LANTANA HOMES PLAT 6

A PLANNED UNIT DEVELOPMENT

PALM BEACH COUNTY, FLORIDA

SHEET 2 OF 2

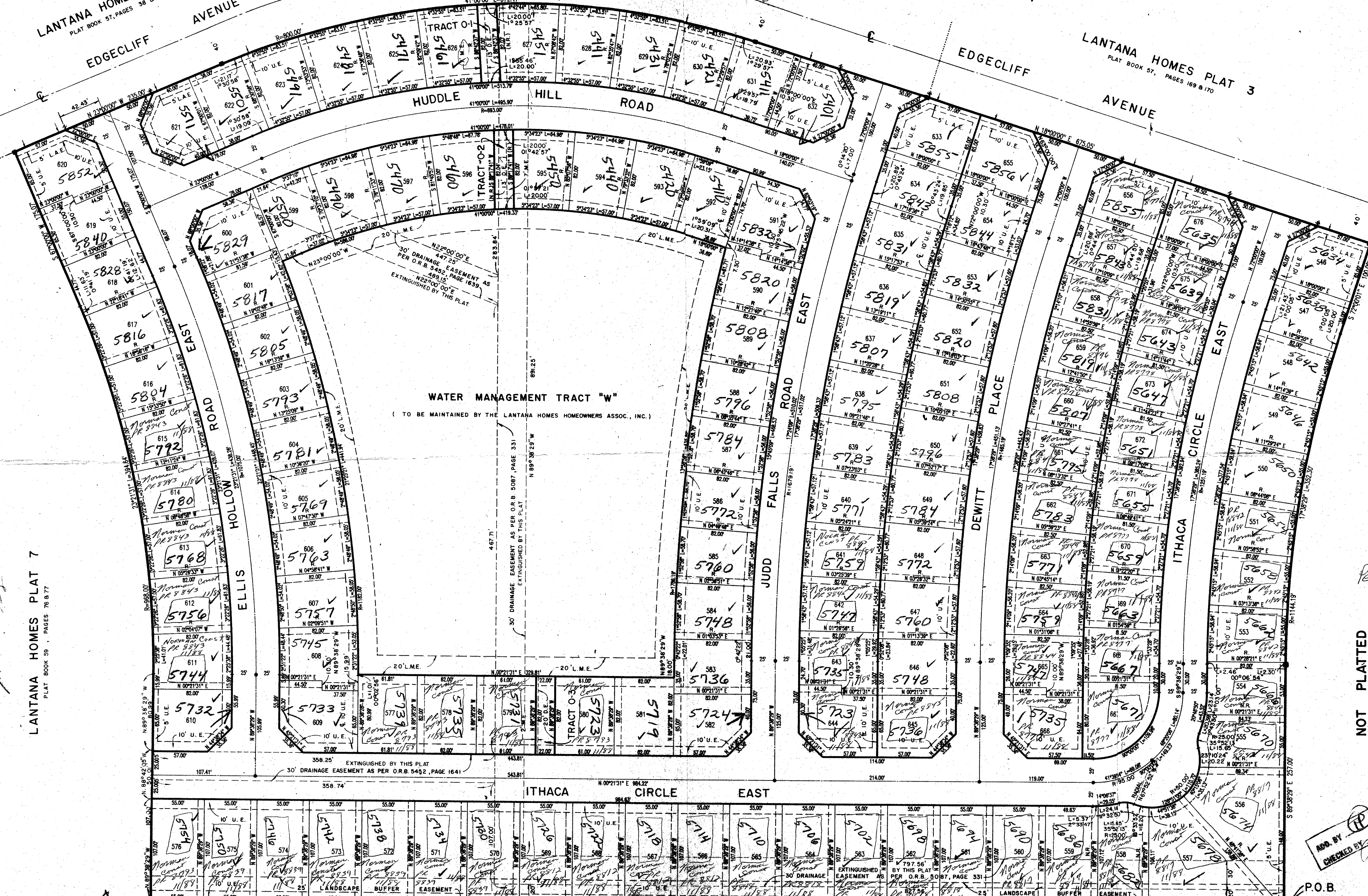
OCTOBER, 1988

38

LANTANA HOMES PLAT 2
PLAT BOOK 57, PAGES 38 & 39

LANTANA HOMES PLAT 3
PLAT BOOK 57, PAGES 169 & 170

STATE OF FLORIDA
COUNTY OF PALM BEACH
This Plat was filed for record at _____
M. this _____ day of _____ 19____
and duly recorded in Plat Book No. _____
on Page _____
John B. Dunkle, Clerk of the Circuit Court
By _____ D.C.



Lantana Homes 6
BOOK 38
PAGE 33
AS 84-61
33463
35744/42
TAZ 349

Ret. 84-61

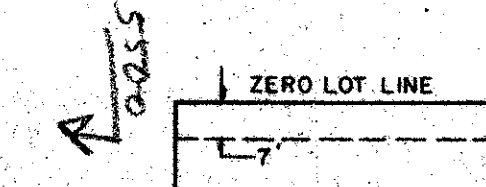
NOT PLATTED

P.O.C.
NORTHWEST CORNER
OF SECTION 35/44/42

ADD. BY (RP)
CHECKED BY (RP)

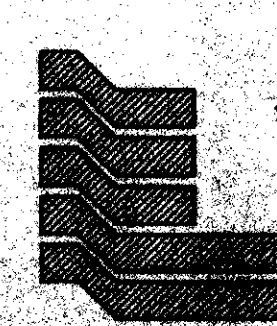
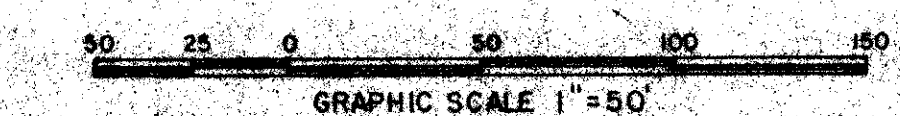
P.O.B.

61/38



NOTE: ALL LOTS HAVE A 7' MAINTENANCE EASEMENT SHOWN THUS:

NOT PLATTED



Landmark Surveying & Mapping Inc.
1850 FOREST HILL BOULEVARD
PH. (305)433-5405 SUITE 200 W.P.B. FLORIDA

LANTANA HOMES PLAT 6