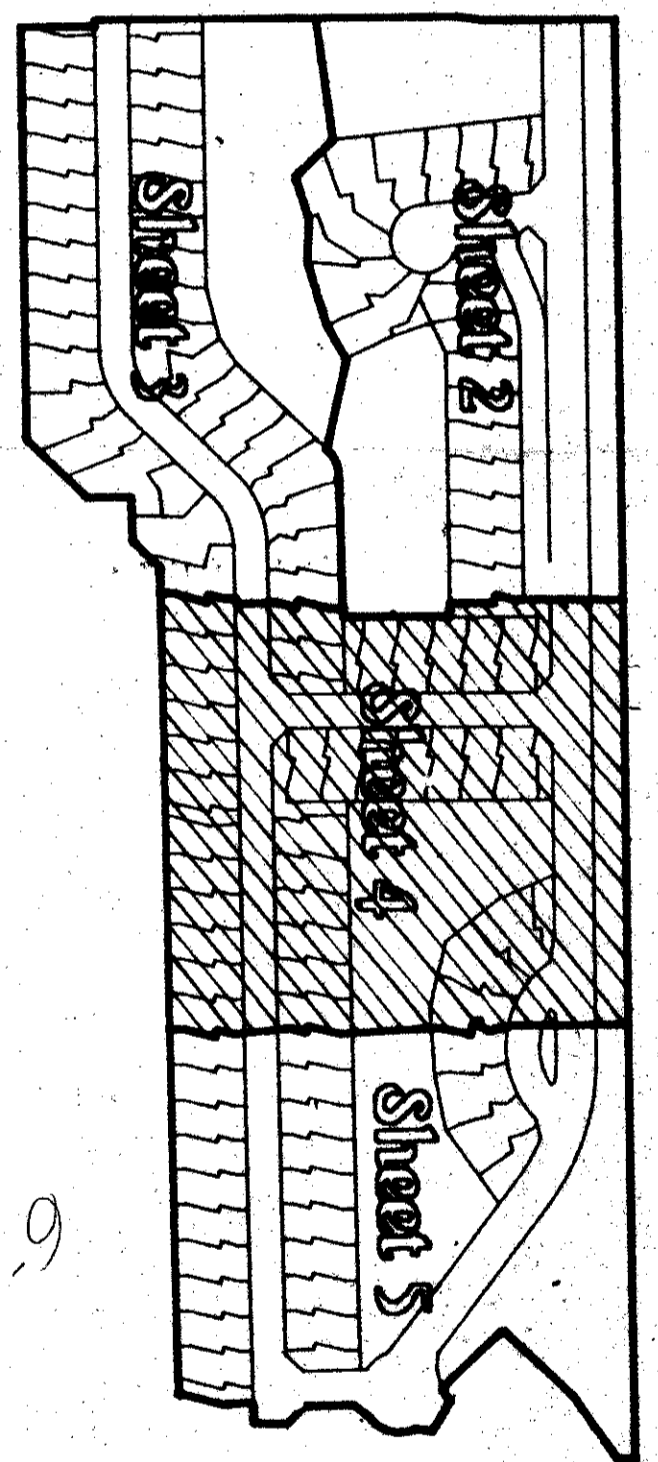
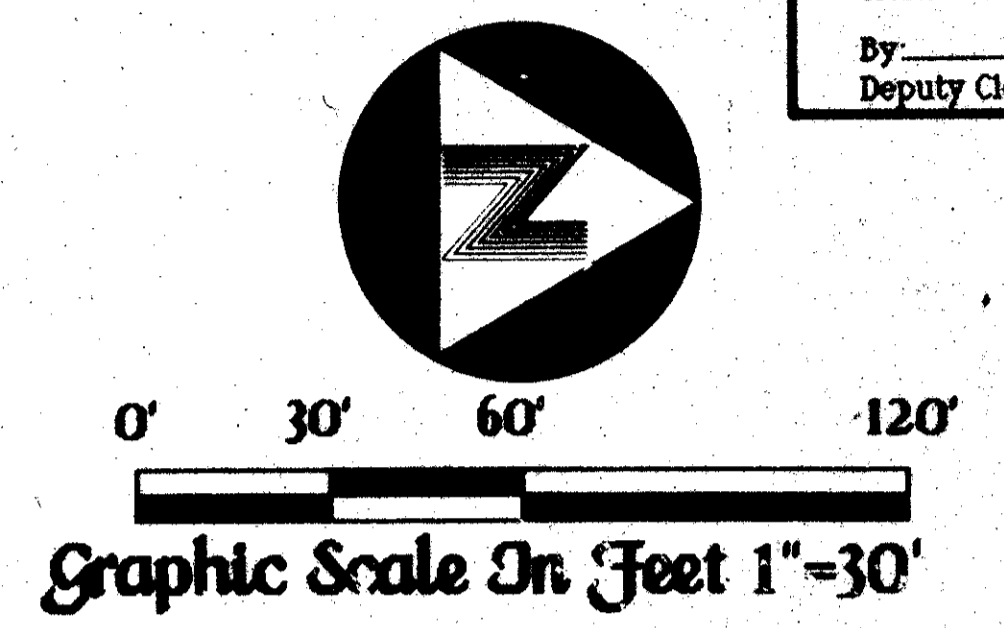


State of Florida)
 County of Palm Beach)
 This Plat was filed for record)
 at _____ day of _____)
 A.D. 1988, and)
 duly recorded in Plat Book)
 _____ on Pages _____ through)
 John B. Dunkle,)
 Clerk of the Circuit Court.)
 By: _____)
 Deputy Clerk)



- Legend:**
- ⊙ Indicates A Permanent Reference Monument * 2424 (P.R.M.)
 - ⊙ Indicates A Permanent Control Point * 2424 (P.C.P.)
 - DE Indicates A Drainage Easement.
 - UE Indicates A Utility Easement.
 - L.M.E. Indicates A Lake Maintenance Easement.
 - M.E. Indicates A Maintenance Easement.

ADD. BY *[Signature]*
 CHECKED BY *[Signature]*

BENCH MARK
 LAND SURVEYING & MAPPING, INC.
 WEST PALM BEACH, FLORIDA - RIVERA BEACH, FLORIDA

Record Plat
Brentwood Of Boca Phases 4 & 5

DATE	SCALE	SIZE	NO.	SHEET
1988	1"=30'	11x17	1	2 OF 5

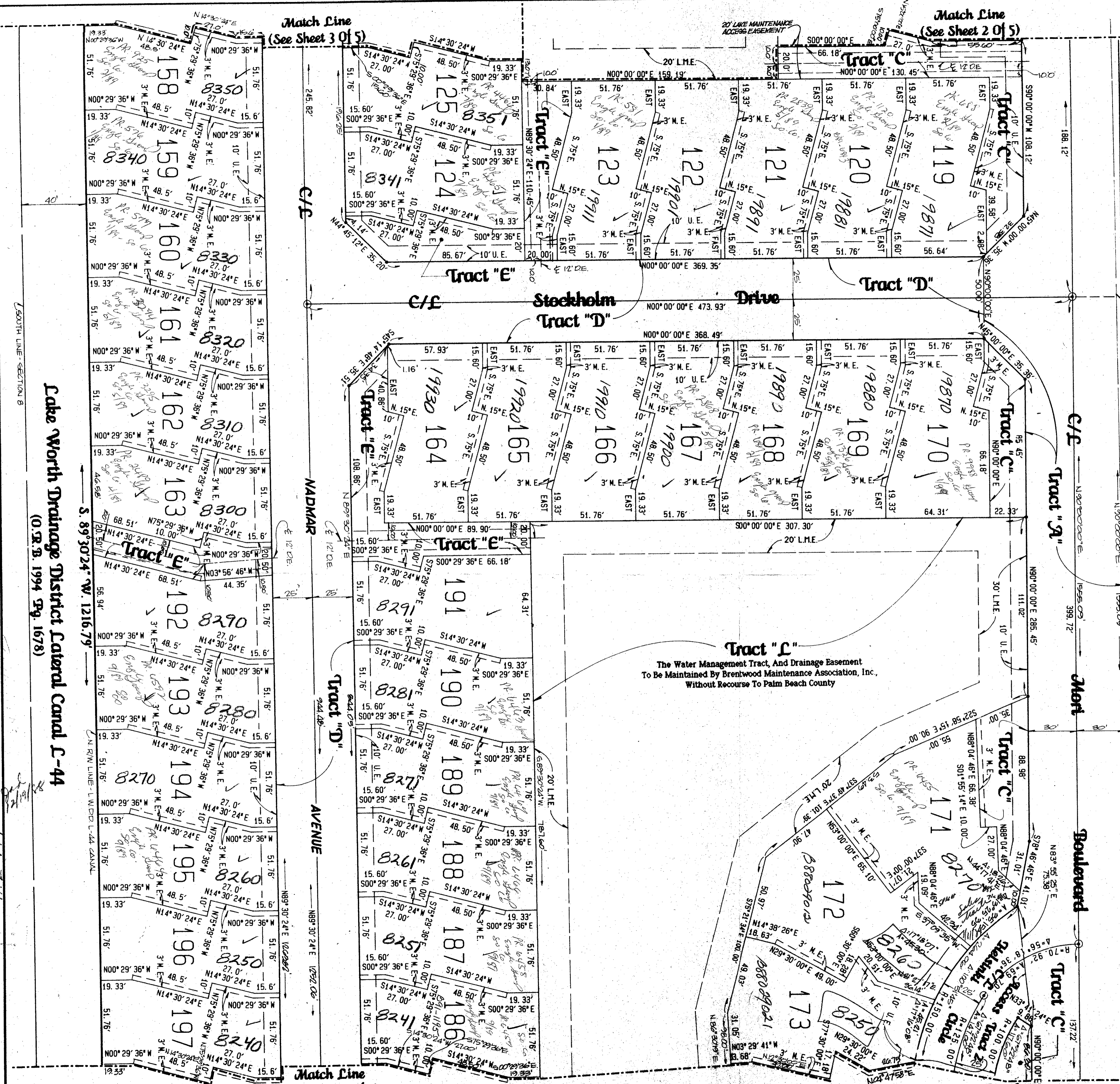
Brentwood Of Boca Phases 4 & 5

Sheet Four of Five

Plat No. 2
 Century Village West
 (P.B. 36, G.P. 143-153)

25' BUFFER EASEMENT

Palm Beach Farms Company Platted Road Right-Of-Way
 Abandoned As Per O.B. 5519, Pg. 1746



This instrument was prepared by Wm. K. Van Campen, R.L.S. in and for the office of Bench Mark Land Surveying & Mapping, Inc., 4152 W. Blue Heron Boulevard, Suite 121, Riviera Beach, FL.

Cake Worth Drainage District Lateral Canal C-44
 (O.B. 1994 Pg. 1678)

RM 80-9

177 244

Pl. 80-9

6/1/87