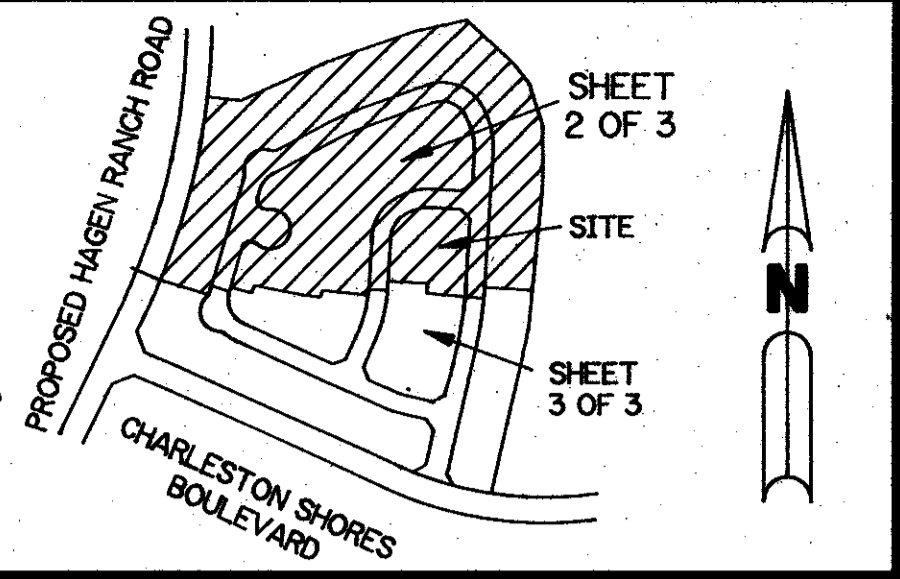


A PART OF LAKE CHARLESTON PLANNED UNIT DEVELOPMENT

# LAKE CHARLESTON PLAT NO. 1 - PARCEL "C"

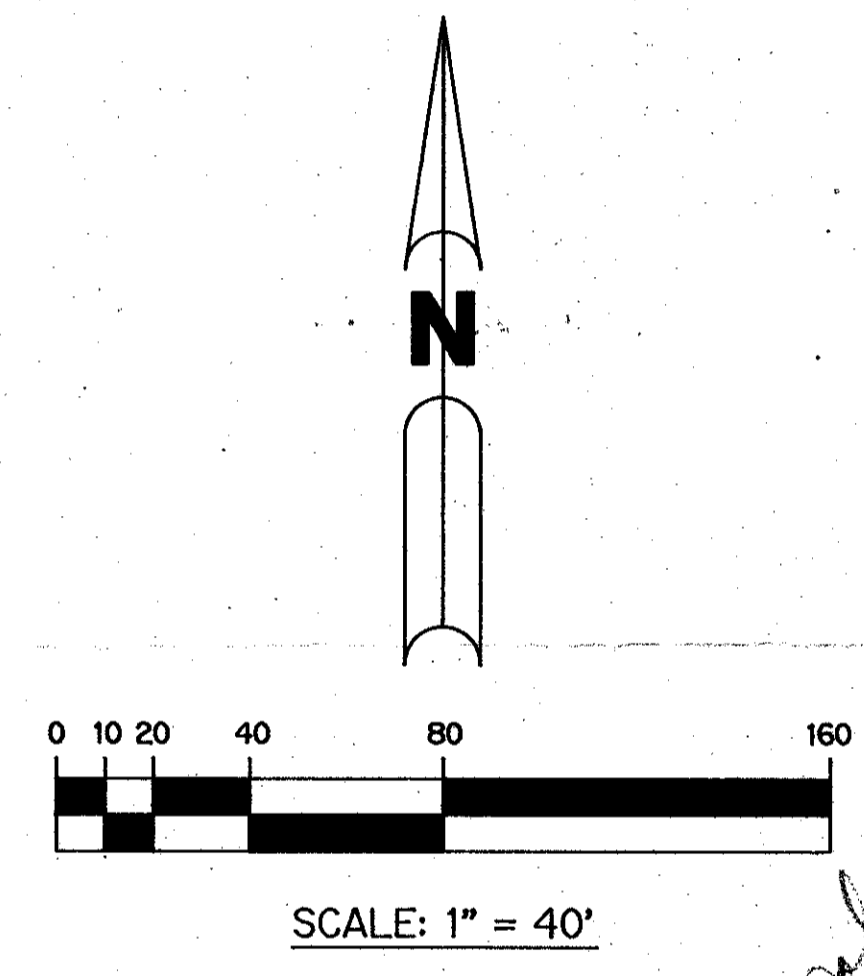
BEING A REPLAT OF TRACT 'C' ACCORDING TO THE PLAT OF LAKE CHARLESTON PLAT NO. 1 - P.U.D. AS RECORDED IN PLAT BOOK 60, PAGES 147 THROUGH 151 INCLUSIVE, OF THE PUBLIC RECORDS OF PALM BEACH COUNTY, FLORIDA. SECTION 10, TOWNSHIP 45 SOUTH, RANGE 42 EAST

SHEET 2 OF 3 MAY, 1988



KEY MAP N.T.S.

THIS INSTRUMENT PREPARED BY PERRY C. WHITE P.L.S. 4213 STATE OF FLORIDA LAWSON, NOBLE AND ASSOCIATES, INC. ENGINEERS PLANNERS TESTING SURVEYORS BOYNTON BEACH, FLORIDA



TAZ 437  
Lake Charleston  
RTS 86-96  
34 B  
1854  
3346  
Parcel 1  
1/15/88

See easement release on all interior lot.

NO. BY  
CHECKED BY

