

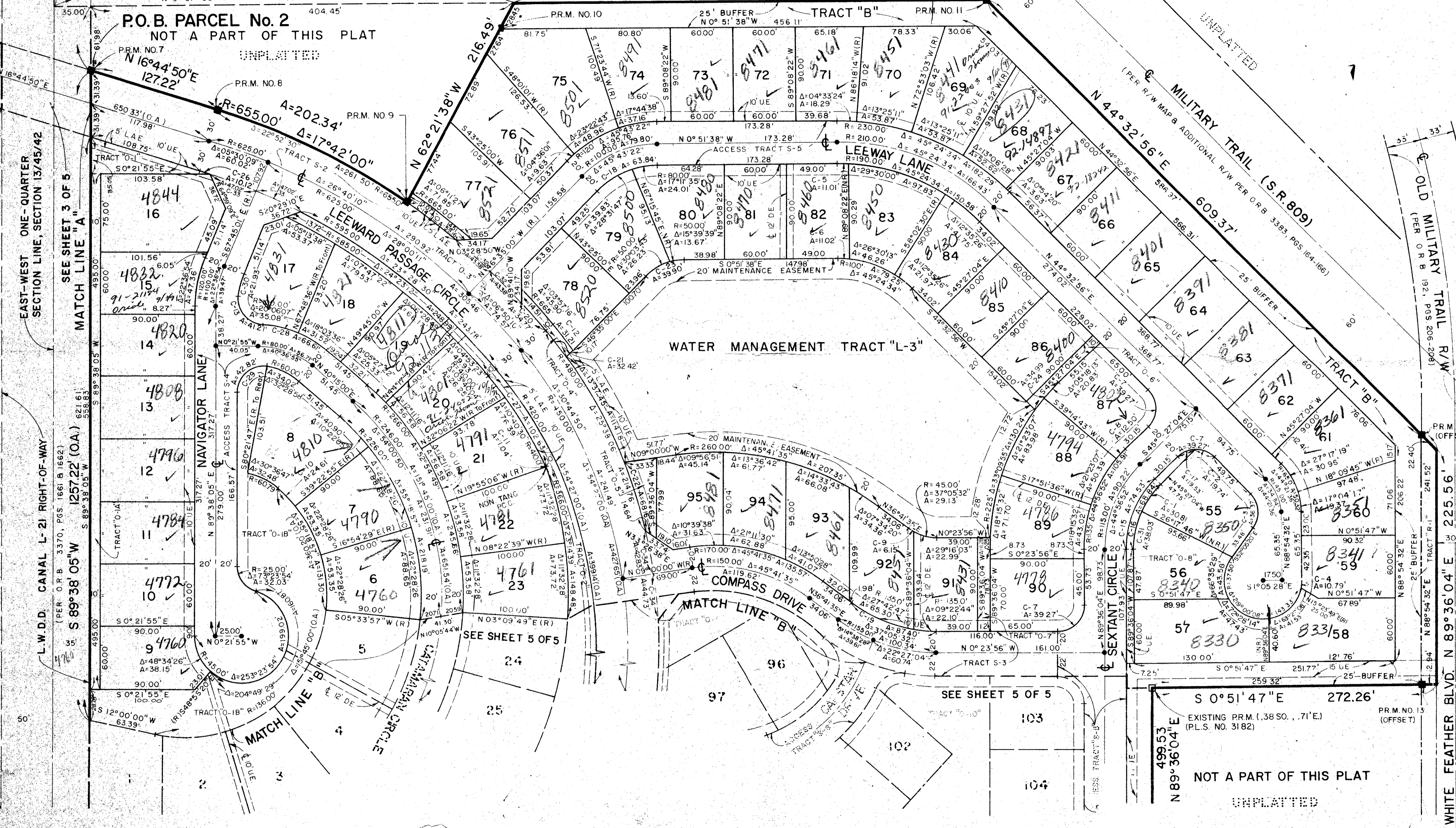
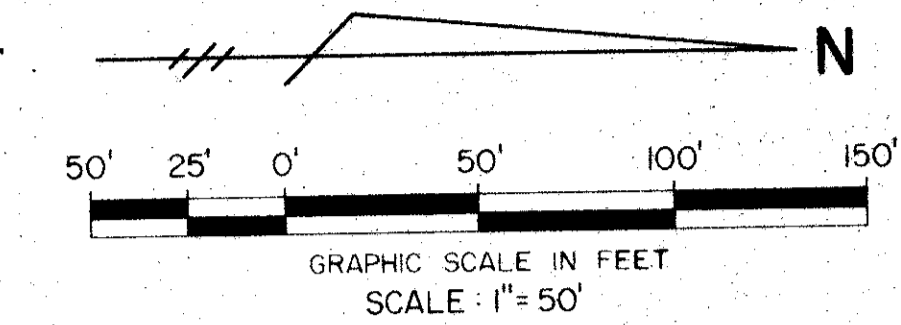
WINDWARD PALM BEACH (A P.U.D.)

BEING A PLAT OF A PORTION OF SECTION 13, TOWNSHIP 45
SOUTH, RANGE 42 EAST, PALM BEACH COUNTY, FLORIDA
AUGUST, 1988

WEST ONE-QUARTER CORNER
SEC. 13/45/42
N 00°51'28"W
35.00'

P.O.C.

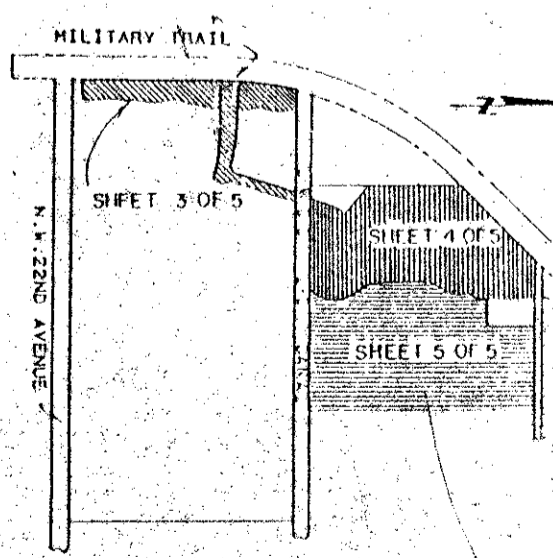
UNPLATTED



CURVE NO.	RADIUS	DELTA	ARC
C-1	87.75'	20°07'01"	30.81'
C-2	25.00'	45°14'06"	19.74'
C-3	25.00'	83°21'44"	36.37'
C-4	37.50'	16°29'17"	10.79'
C-5	190.00'	03°19'08"	11.01'
C-6	100.00'	06°18'55"	11.02'
C-7	25.00'	90°00'00"	39.27'
C-8	135.00'	05°18'13"	12.50'
C-9	45.00'	07°49'28"	6.15'
C-10	136.00'	10°22'05"	24.61'
C-11	366.00'	00°09'44"	1.04'
C-12	490.00'	03°38'56"	31.21'
C-13	25.00'	94°27'14"	41.21'
C-14	655.00'	05°10'30"	59.16'
C-15	95.00'	44°56'52"	74.53'
C-16	87.75'	44°56'52"	68.84'
C-17	85.00'	44°45'54"	19.53'
C-18	80.00'	45°43'22"	63.84'
C-19	135.00'	37°05'32"	87.40'
C-20	655.00'	03°02'30"	34.77'
C-21	480.00'	03°52'12"	32.42'
C-22	480.00'	08°08'08"	68.16'
C-23	50.00'	45°43'22"	39.90'
C-24	225.00'	08°54'40"	34.99'
C-25	225.00'	02°52'17"	11.28'
C-26	595.00'	00°58'28"	10.12'
C-27	410.00'	14°20'34"	102.63'
C-28	100.00'	38°09'43"	66.61'
C-29	25.00'	98°07'57"	42.82'
C-30	80.00'	15°42'29"	21.93'
C-31	87.75'	24°49'51"	38.03'
C-32	655.00'	03°47'40"	43.38'
C-33	595.00'	04°31'41"	47.02'
C-34	480.00'	05°20'21"	44.73'

Windward Palm Beach
46
34
7B 190B
RS 75225
35463
TAX 489
Pub

NOT A PART OF THIS PLAT
UNPLATTED



WINDWARD P.U.D.
SHEET INDEX
Duplicate Plat
0340-001

METRIC ENGINEERING INC.
ENGINEERS - PLANNERS - SURVEYORS
MIAMI - WEST PALM BEACH

DESIGNED BY: WLF
CHECKED BY: S.G.
DATE: 8-17-88

WINDWARD PALM BEACH
SHEET 4 OF 5