

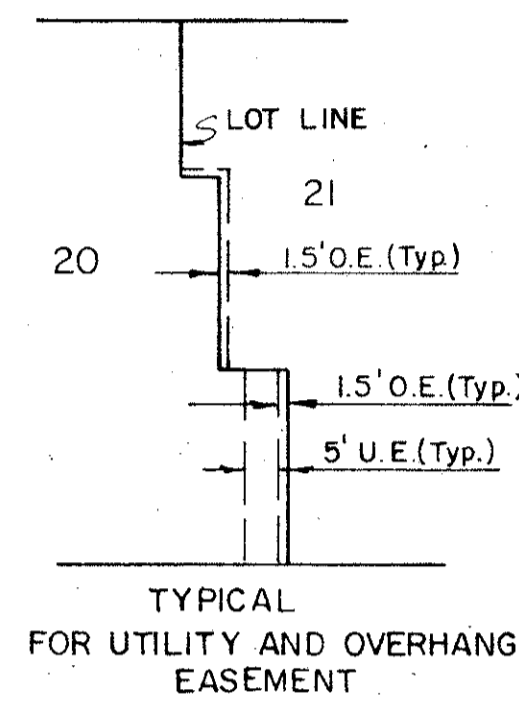
PLAT NO. 13A EASTPOINTE SUBDIVISION (A PLANNED UNIT DEVELOPMENT)

103

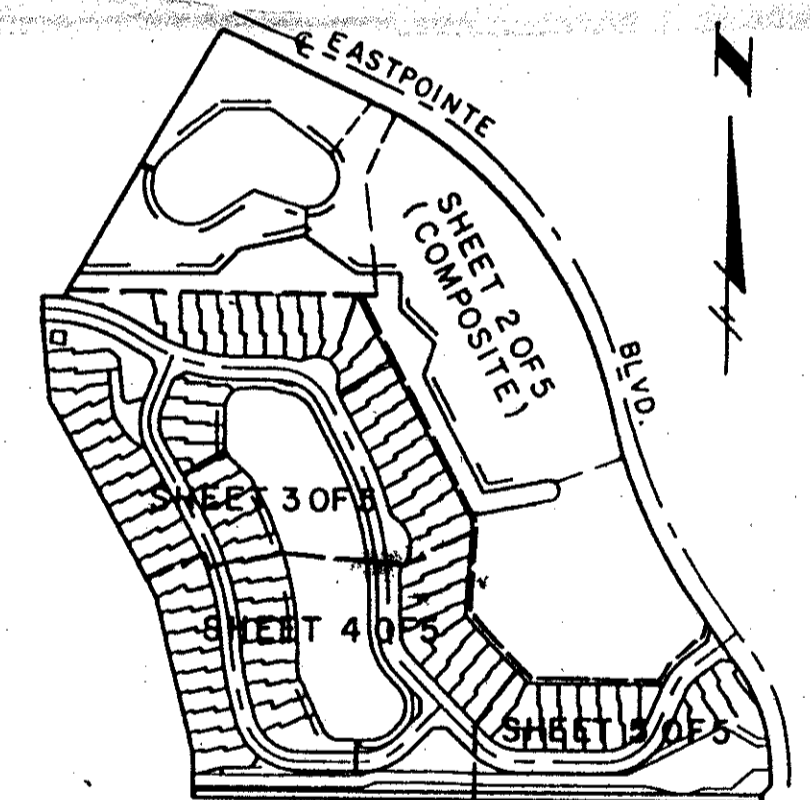
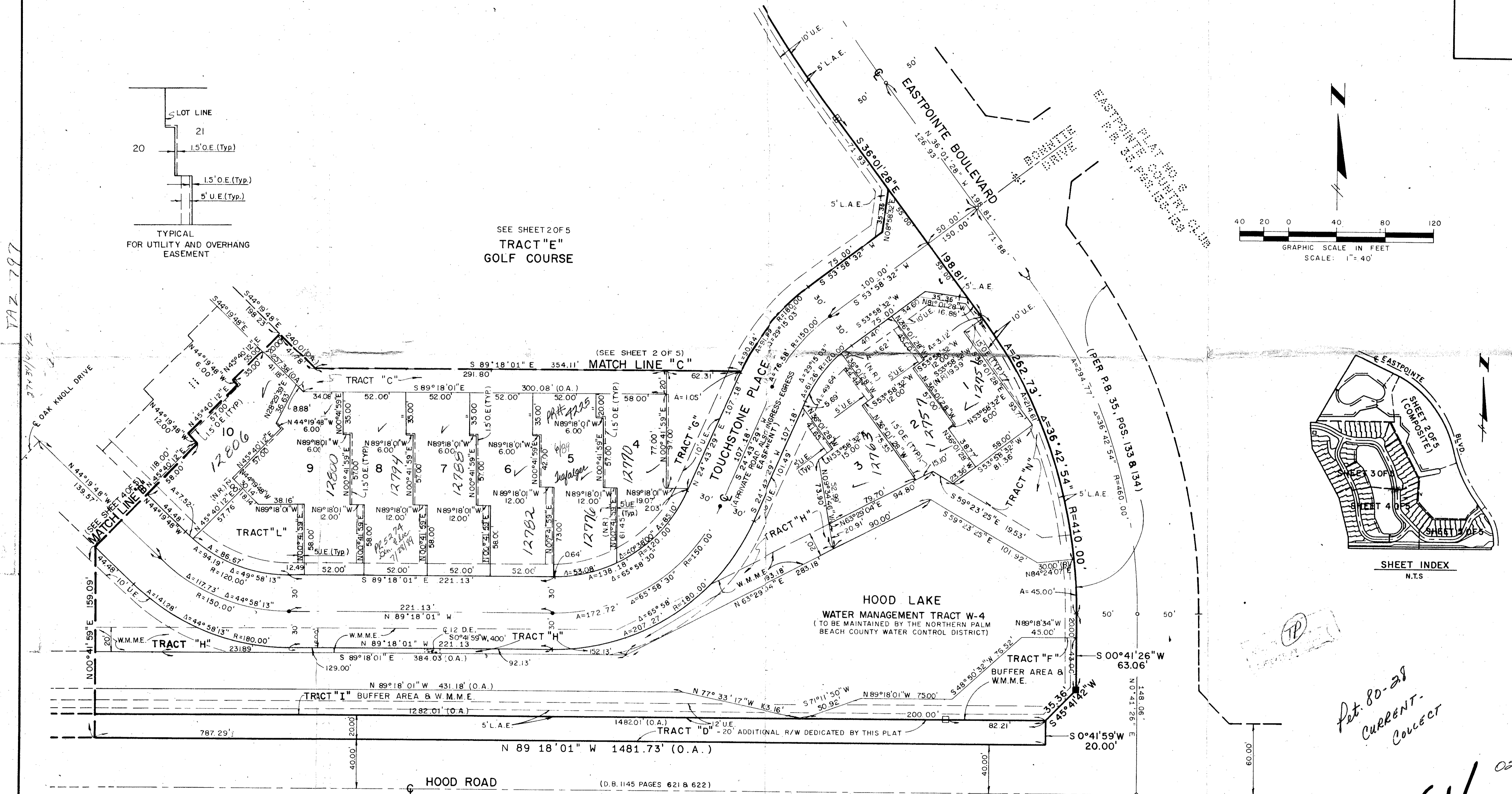
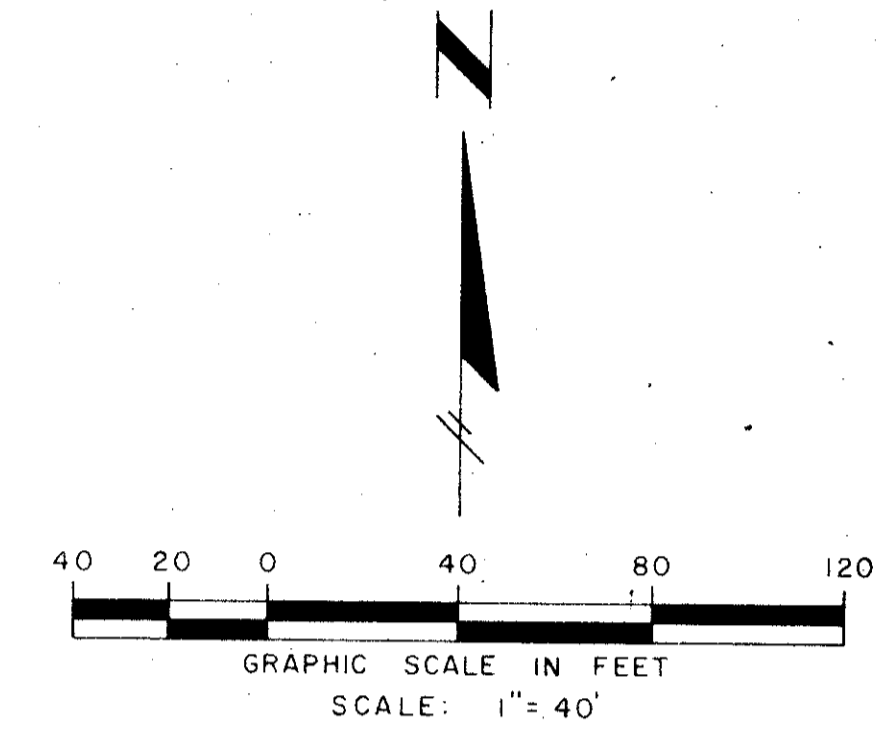
BEING A PLAT OF A PORTION OF SECTIONS 27 AND 34, TOWNSHIP 41 SOUTH,
RANGE 42 EAST, PALM BEACH COUNTY, FLORIDA.

AUGUST, 1988

SHEET 5 OF 5



SEE SHEET 2 OF 5
TRACT "E"
GOLF COURSE



*Det. 80-28
CURRENT
CORRECT*

0238-005

61/103

METRIC ENGINEERING INC.
ENGINEERS - PLANNERS - SURVEYORS
MIAMI - FORT LAUDERDALE
WEST PALM BEACH - PANAMA CITY

D.R.
W.M.
CHECKED

PLAT No. 13A
EASTPOINTE SUBDIVISION
SHEET 5 OF 5

*Eastpointe
61 B 103
RE 80-28
53115*

TAZ 797

2731412

(D.B. 1145 PAGES 621 & 622)
(D.B. 382 PAGES 304 & 305)