

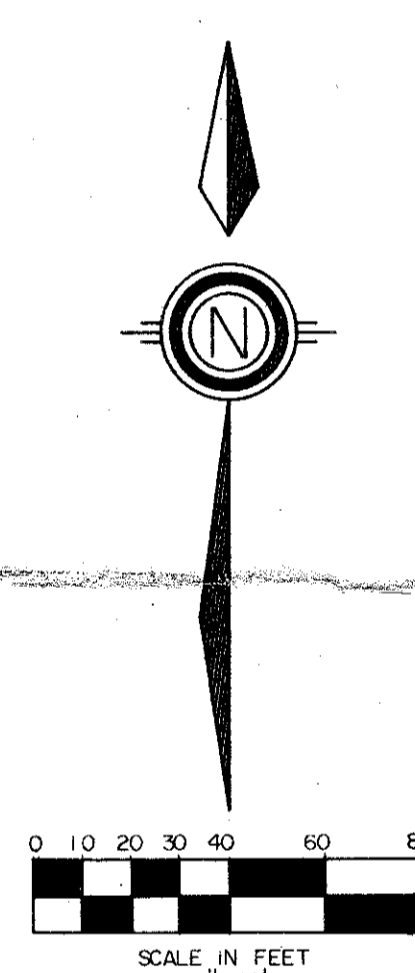
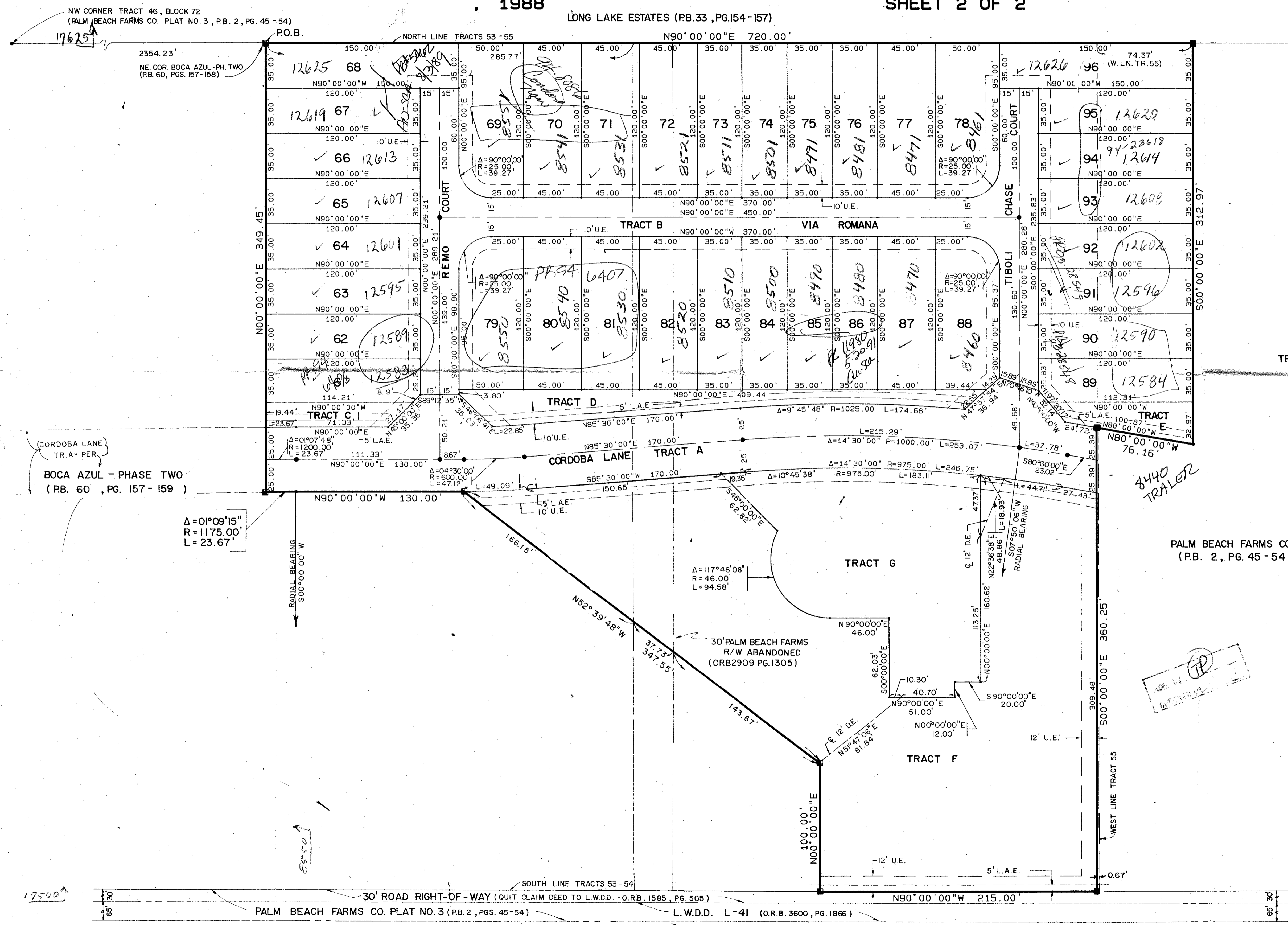
BOCA AZUL - PHASE THREE  
A REPLAT OF A PORTION OF TRACTS 53 - 55, BLOCK 72,  
PALM BEACH FARMS COMPANY PLAT NO. 3, (P.B.2, PG.45-54)  
SITUATE IN SECTION 5, TOWNSHIP 47 SOUTH, RANGE 42 EAST  
PALM BEACH COUNTY, FLORIDA

1988

SHEET 2 OF 2

STATE OF FLORIDA  
COUNTY OF PALM BEACH  
THIS PLAT WAS FILED FOR  
RECORD \_\_\_\_\_  
THIS \_\_\_\_\_ DAY OF \_\_\_\_\_  
AD, 1988 AND DULY RECORDED  
IN PLAT BOOK \_\_\_\_\_ ON PAGES  
\_\_\_\_\_ AND \_\_\_\_\_  
JOHN B. DUNKLE, CLERK  
BY: \_\_\_\_\_, D.C.

17625  
17500  
SUBMISSION Boca Azul 3  
BOOK 109  
PAGE 53  
RM 33434  
2/15/88  
5/17/82  
T12 768



61/109  
STANLEY WANTMAN, INC  
2000 LOMBARD STREET, WEST PALM BEACH, FL 33407 (309) 842-7444  
DRAWN BY D.M.W. DATE Feb. 1988  
CHECKED BY W.B.H. SCALE 1"=40'  
DRAWING NO. 09513PL3  
BOCA AZUL - PHASE THREE