

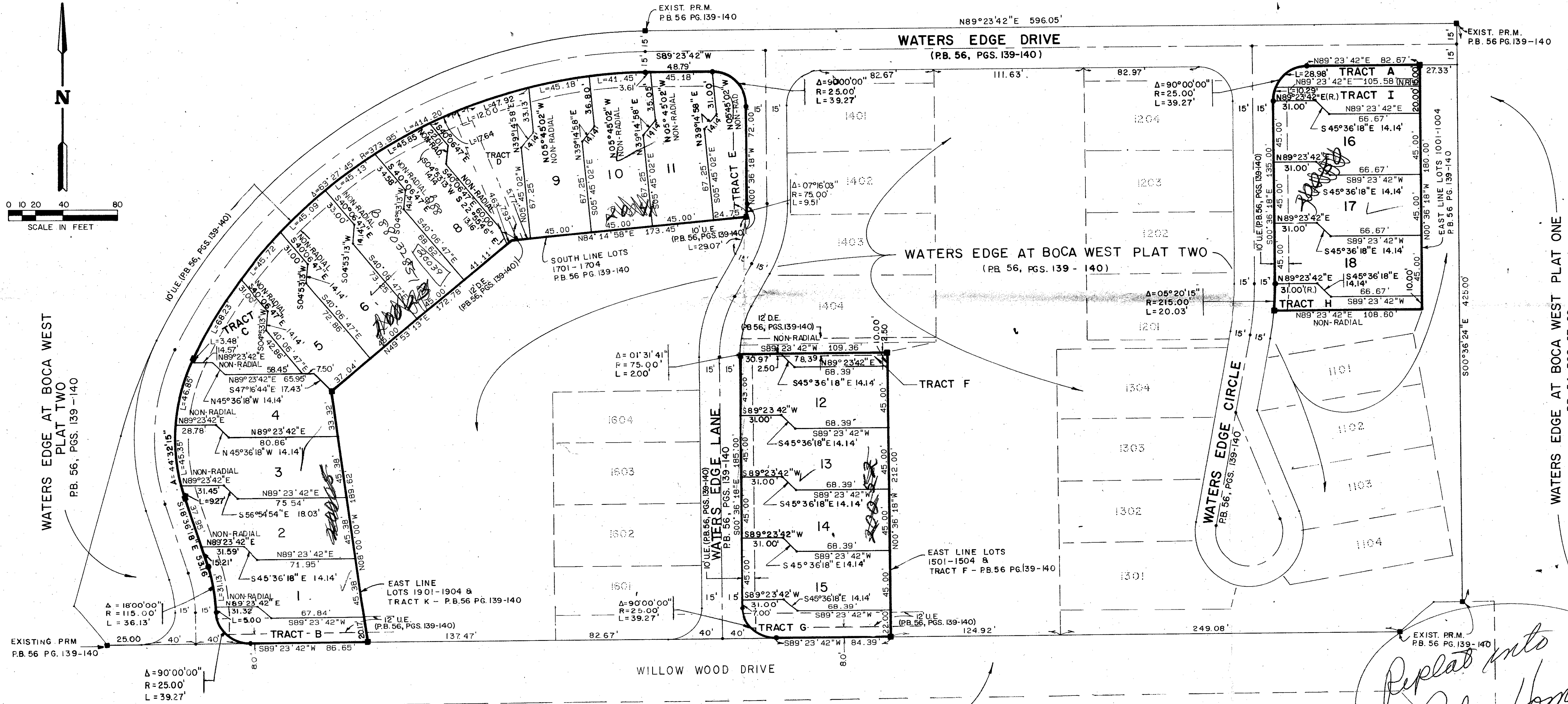
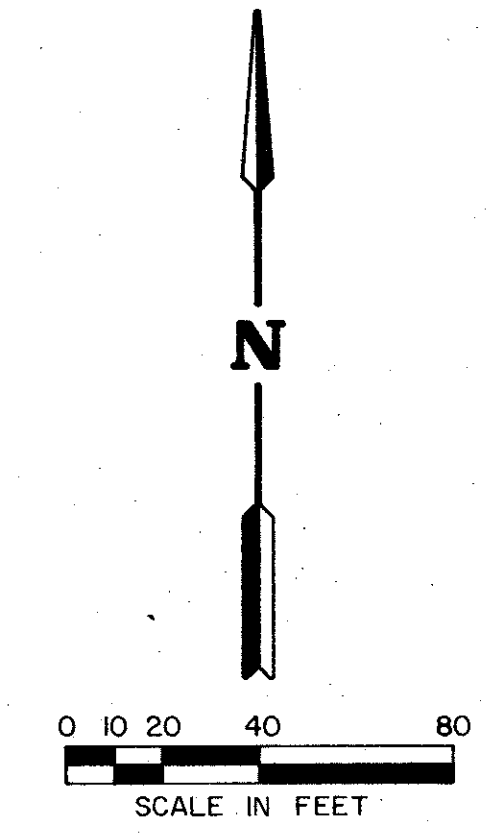
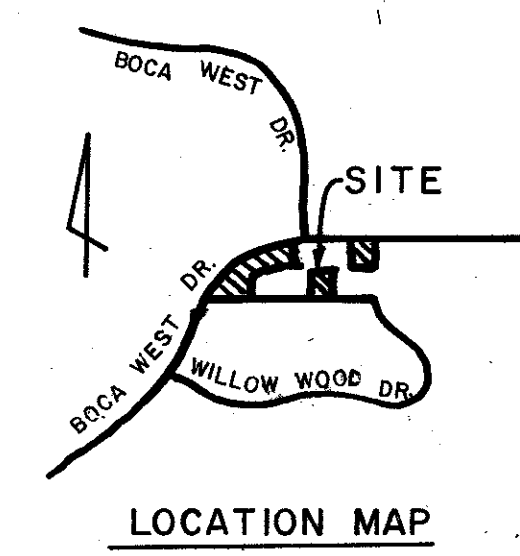
# WATERS EDGE AT BOCA WEST PLAT THREE.

A PART OF BOCA WEST - P. U. D.  
BEING A REPLAT OF LOTS 1001-1004, 1501-1504, 1701-1904, AND TRACTS A, F, H,  
I, J AND K OF "WATERS EDGE AT BOCA WEST PLAT TWO" (P.B. 56, PGS. 139 - 140)  
SITUATE IN SECTION 15, TOWNSHIP 47 SOUTH, RANGE 42 EAST  
PALM BEACH COUNTY, FLORIDA

OCTOBER, 1988

SHEET 2 OF 2

STATE OF FLORIDA  
COUNTY OF PALM BEACH  
THIS PLAT WAS FILED FOR  
RECORD \_\_\_\_\_ DAY OF \_\_\_\_\_  
AD, 1988 AND DULY RECORDED  
IN PLAT BOOK \_\_\_\_\_ ON PAGES  
\_\_\_\_\_ AND \_\_\_\_\_  
JOHN B. DUNKLE, CLERK  
BY: \_\_\_\_\_ D.C.



*Waters Edge @ Boca West 3*  
*61*  
*38*  
*AR 85-7*  
*33434*  
*TAZ 607?*  
*Bra 668*

*Replat into  
Patco Homes*

*61/111*

APPROVED BY [Signature]

**STANLEY/WANTMAN, INC.**  
2000 LOMBARD STREET, WEST PALM BEACH, FL 33407 (305) 842-7111

DRAWN	T.L.N.	DATE	MAY, 1988
CHECKED	W.B.H.	SCALE	1"=40'
DRAWING NO.	09856PL		

WATERS EDGE AT BOCA WEST PLAT THREE

WATERS EDGE AT BOCA WEST PLAT ONE  
PB. 54, PGS. 67-69

WATERS EDGE AT BOCA WEST  
PLAT TWO  
PB. 56, PGS. 139-140

WATERS EDGE AT BOCA WEST PLAT TWO  
(PB. 56, PGS. 139 - 140)

BOCA WEST  
VILLAGE OF WILLOW WOOD - P.U.D.  
PB. 37, PGS. 105-108