

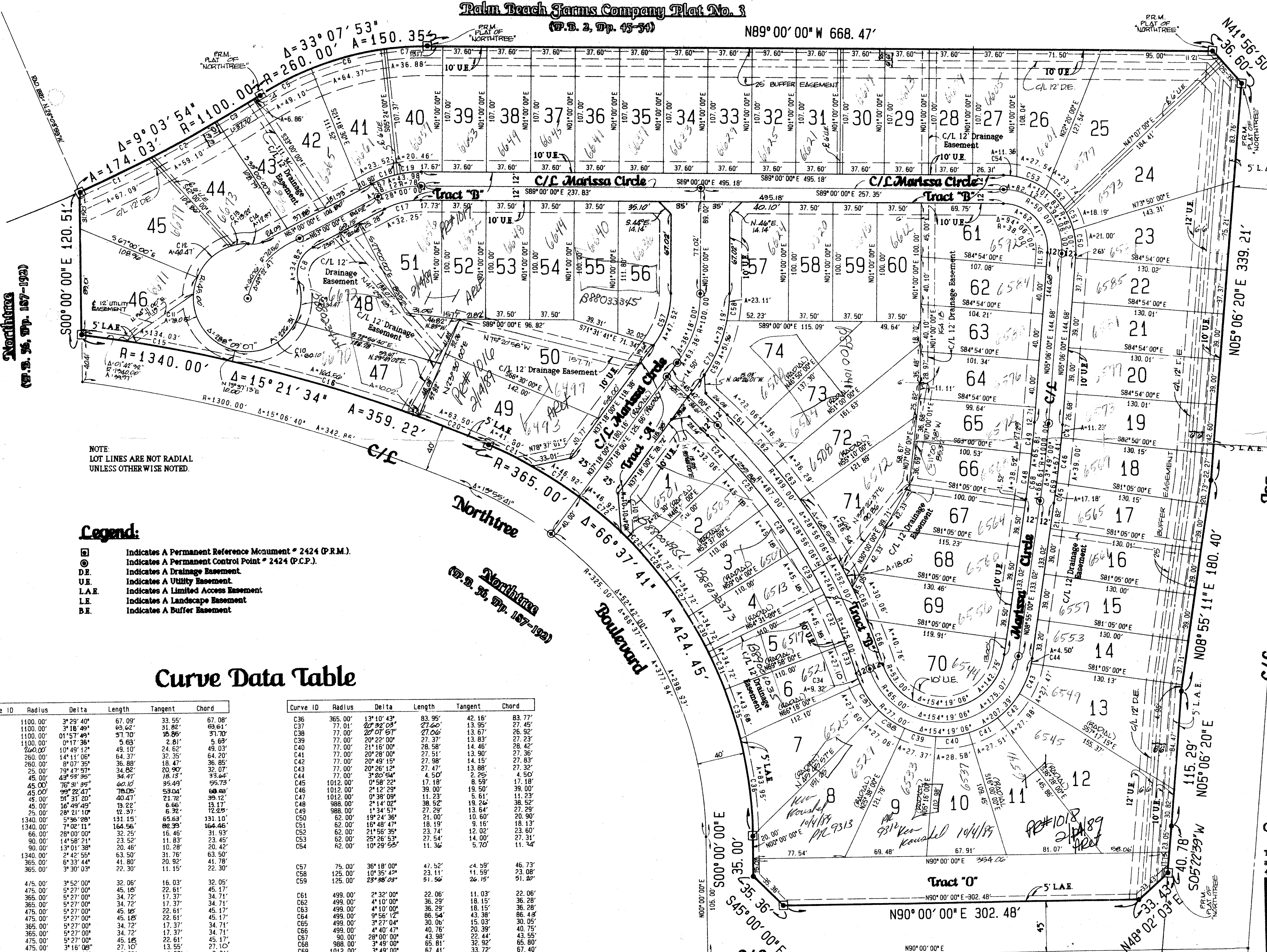
# -Northtree Plat No. 2-

Palm Beach Farms Company Plat No. 3

(P.B. 2, Pp. 45-54)

N89°00'00"W 668.47'

State of Florida )  
 County Of Palm Beach )  
 This Plat was filed for record at  
 this day of  
 A.D. 1988, and duly recorded  
 in Plat Book 61 on  
 Page 128 and 129  
 John B. Dunkle,  
 Clerk of the Circuit Court.  
 By \_\_\_\_\_ Deputy Clerk



NOTE:  
 LOT LINES ARE NOT RADIAL  
 UNLESS OTHERWISE NOTED.

### Legend:

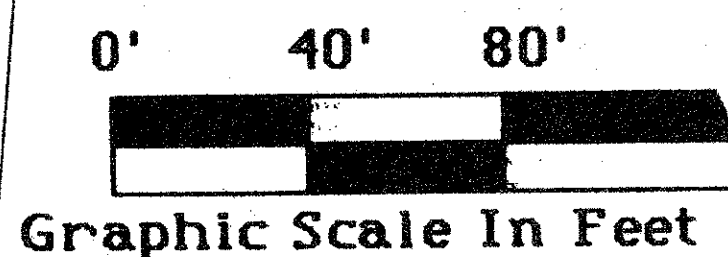
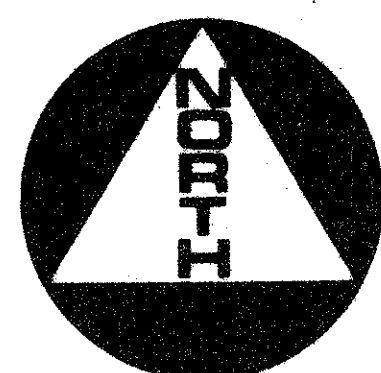
- ⊙ Indicates A Permanent Reference Monument \* 2424 (P.R.M.)
- ⊙ Indicates A Permanent Control Point \* 2424 (P.C.P.)
- D.E. Indicates A Drainage Easement
- U.E. Indicates A Utility Easement
- L.A.E. Indicates A Limited Access Easement
- L.E. Indicates A Landscape Easement
- B.E. Indicates A Buffer Easement

### Curve Data Table

Curve ID	Radius	Delta	Length	Tangent	Chord
C1	1100.00'	3°29'40"	67.09'	33.55'	67.08'
C2	1100.00'	3°18'49"	63.62'	31.82'	63.61'
C3	1100.00'	0°17'49"	37.70'	18.85'	37.70'
C4	1100.00'	10°49'38"	5.63'	2.81'	5.63'
C5	260.00'	10°49'38"	49.10'	24.62'	49.03'
C6	260.00'	14°11'06"	64.37'	32.35'	64.20'
C7	260.00'	8°07'35"	36.88'	18.47'	36.85'
C8	25.00'	79°17'57"	34.82'	20.90'	32.07'
C9	45.00'	43°53'58"	34.41'	18.13'	33.64'
C10	45.00'	76°31'35"	60.10'	35.49'	55.73'
C11	45.00'	99°22'47"	78.05'	53.04'	68.88'
C12	45.00'	51°31'20"	40.47'	21.72'	39.12'
C13	45.00'	16°49'49"	13.22'	6.66'	13.11'
C14	25.00'	28°21'10"	12.37'	6.32'	12.25'
C15	1340.00'	5°36'28"	131.15'	65.63'	131.10'
C16	1340.00'	7°02'11"	164.56'	82.39'	164.46'
C17	66.00'	28°00'00"	32.25'	16.46'	31.93'
C18	90.00'	14°58'21"	23.52'	11.85'	23.46'
C19	90.00'	13°01'38"	20.46'	10.28'	20.42'
C20	1340.00'	2°42'55"	63.50'	31.76'	63.50'
C21	365.00'	6°33'44"	41.80'	20.92'	41.78'
C22	365.00'	3°30'03"	22.30'	11.15'	22.30'
C24	475.00'	5°52'00"	32.06'	16.03'	32.06'
C25	475.00'	5°27'00"	45.18'	22.61'	45.17'
C26	365.00'	5°27'00"	34.72'	17.37'	34.71'
C27	365.00'	5°27'00"	34.72'	17.37'	34.71'
C28	475.00'	5°27'00"	45.18'	22.61'	45.17'
C29	475.00'	5°27'00"	45.18'	22.61'	45.17'
C30	365.00'	5°27'00"	34.72'	17.37'	34.71'
C31	365.00'	5°27'00"	34.72'	17.37'	34.71'
C32	475.00'	5°27'00"	45.18'	22.61'	45.17'
C33	475.00'	3°16'08"	27.10'	13.55'	27.10'
C34	77.00'	6°56'06"	9.32'	4.67'	9.31'
C35	365.00'	6°51'24"	23.68'	11.87'	23.68'

Curve ID	Radius	Delta	Length	Tangent	Chord
C36	365.00'	13°10'43"	83.95'	42.16'	83.77'
C37	77.00'	20°32'03"	27.66'	13.95'	27.45'
C38	77.00'	20°07'51"	27.06'	13.67'	26.92'
C39	77.00'	20°22'00"	27.37'	13.83'	27.23'
C40	77.00'	21°16'00"	28.58'	14.46'	28.42'
C41	77.00'	20°28'00"	27.51'	13.90'	27.36'
C42	77.00'	20°49'15"	27.98'	14.15'	27.83'
C43	77.00'	20°26'12"	27.47'	13.88'	27.32'
C44	77.00'	3°20'54"	4.50'	2.25'	4.50'
C45	1012.00'	0°58'22"	17.18'	8.59'	17.18'
C46	1012.00'	2°12'29"	39.00'	19.50'	39.00'
C47	1012.00'	0°38'08"	11.23'	5.61'	11.23'
C48	988.00'	2°14'02"	38.52'	19.26'	38.52'
C49	988.00'	1°34'57"	27.29'	13.64'	27.29'
C50	62.00'	19°24'36"	21.00'	10.60'	20.90'
C51	62.00'	18°48'47"	18.19'	9.10'	18.13'
C52	62.00'	21°56'35"	23.74'	12.32'	23.60'
C53	62.00'	25°26'53"	27.54'	14.00'	27.31'
C54	62.00'	10°29'55"	11.36'	5.70'	11.34'
C57	75.00'	36°18'00"	47.52'	24.59'	46.73'
C58	125.00'	10°35'43"	23.11'	11.59'	23.08'
C59	125.00'	23°38'03"	51.56'	26.15'	51.20'
C61	499.00'	2°32'00"	22.06'	11.03'	22.06'
C62	499.00'	4°10'00"	36.29'	18.15'	36.28'
C63	499.00'	4°10'00"	36.29'	18.15'	36.28'
C64	499.00'	9°56'12"	66.54'	43.38'	66.42'
C65	499.00'	3°27'04"	30.06'	15.03'	30.05'
C66	499.00'	4°40'47"	40.76'	20.39'	40.75'
C67	988.00'	28°00'00"	43.98'	22.44'	43.55'
C68	988.00'	3°49'00"	65.81'	32.92'	65.80'
C69	1012.00'	3°49'00"	67.41'	33.72'	67.40'
C70	125.00'	36°18'00"	79.19'	40.98'	77.88'
C71	365.00'	7°21'57"	46.92'	23.49'	46.89'
C72	365.00'	7°21'57"	46.92'	23.49'	46.89'

Unplatted  
 of  
 F  
 S  
 L  
 W  
 Imp.  
 0490



This instrument was prepared by Wm. R. and for the offices of Bench Mark Land 4152 W. Blue Heron Boulevard, Su

Scale: 1" = 40'

North

OWN SCALE

CKD