

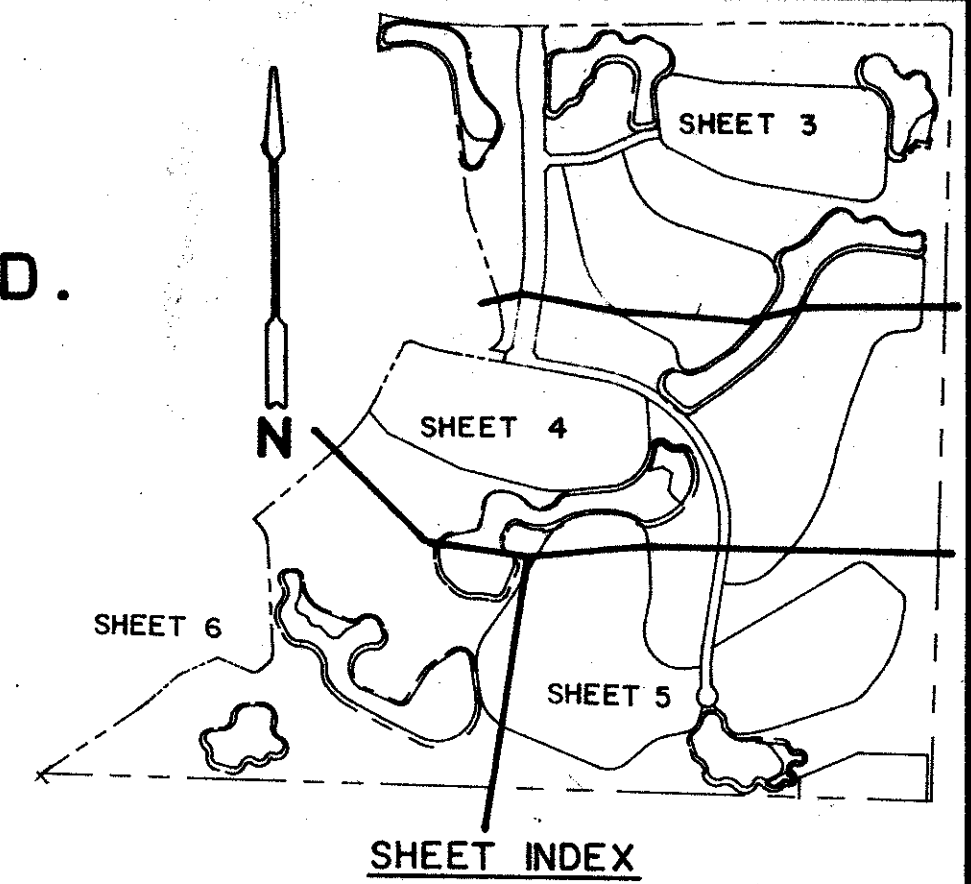
WYCLIFFE PLAT ONE

PART OF WYCLIFFE GOLF AND COUNTRY CLUB (FORMERLY KNOWN AS SUNDIAL COUNTRY CLUB), A P.U.D.
SITUATE IN SECTION 25, TOWNSHIP 44 SOUTH, RANGE 41 EAST
PALM BEACH COUNTY, FLORIDA

1989

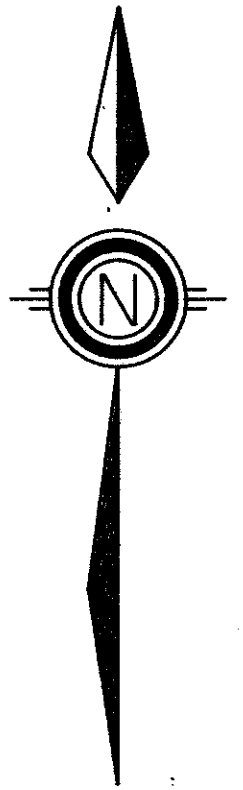
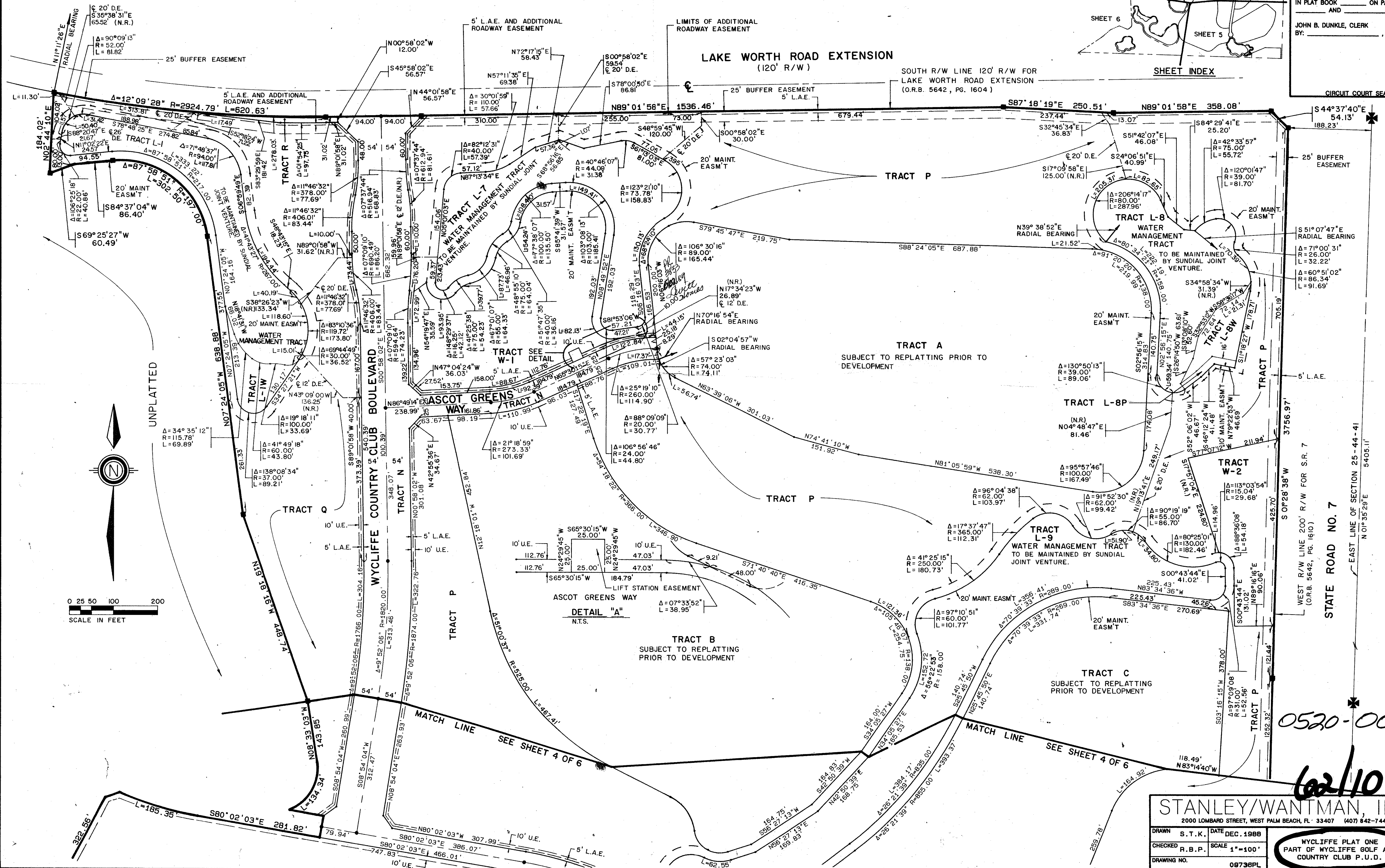
SHEET 3 OF 6

STATE OF FLORIDA
COUNTY OF PALM BEACH
THIS PLAT WAS FILED FOR
RECORD _____ DAY OF _____
AD, 1989 AND DULY RECORDED
IN PLAT BOOK _____ ON PAGES
_____ AND _____
JOHN B. DUNKLE, CLERK
BY: _____, D.C.



SHEET INDEX

CIRCUIT COURT SEAL



TAZ 737
SUBDIVISION: Wycliffe
BOOK: 62
PAGE: 10
FILED: 10/10/89
DATE: 10/10/89
PLAT: 86-104
PUB NAME: STANLEY/WANTMAN, INC.

STANLEY/WANTMAN, INC.
2000 LOMBARD STREET, WEST PALM BEACH, FL 33407 (407) 842-7444

DRAWN	S.T.K.	DATE	DEC. 1988
CHECKED	R.B.P.	SCALE	1"=100'
DRAWING NO.	09736PL		

WYCLIFFE PLAT ONE
PART OF WYCLIFFE GOLF AND COUNTRY CLUB P.U.D.

0520-001
62/10