

WYCLIFFE PLAT ONE

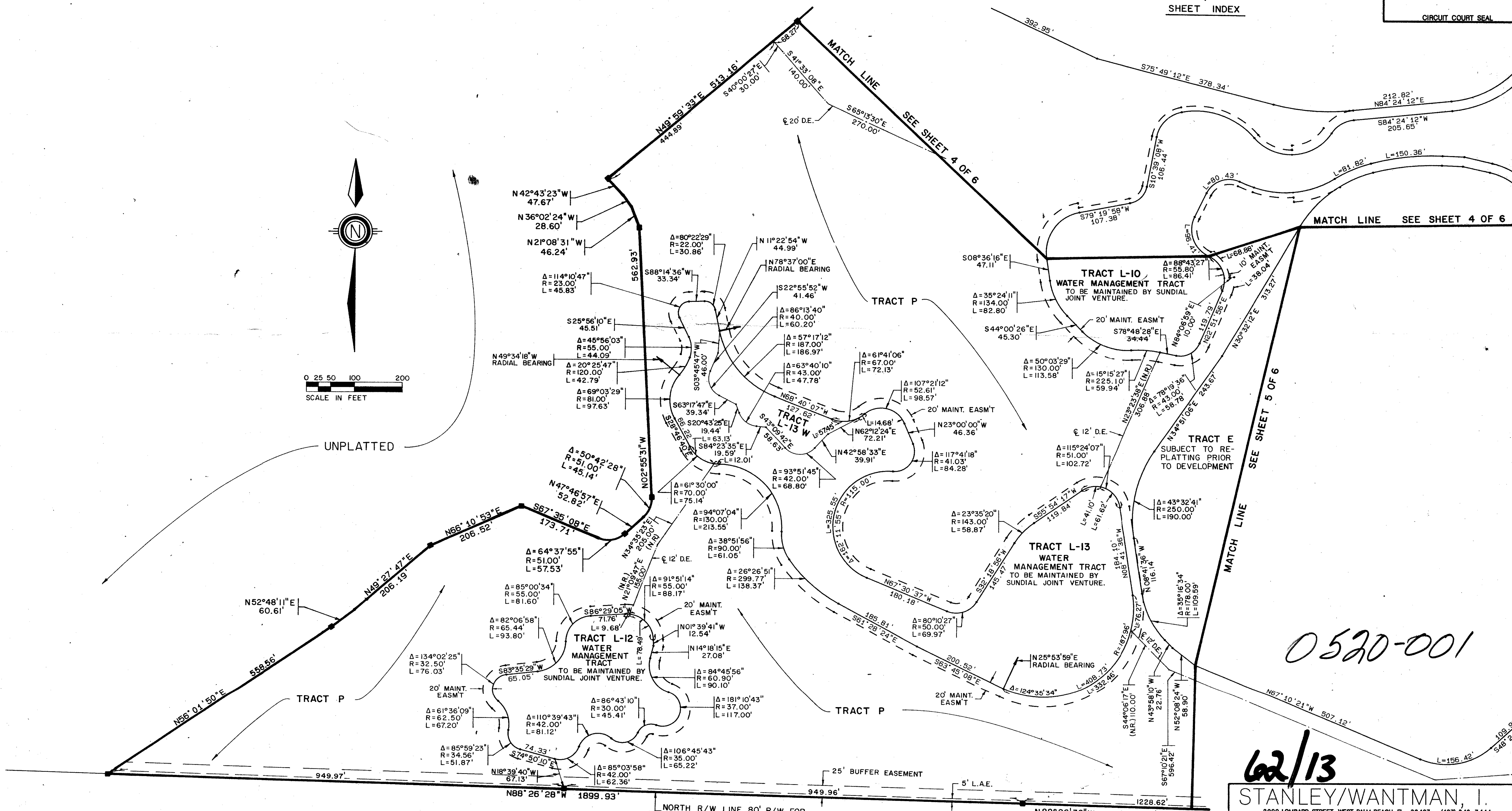
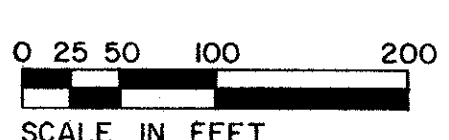
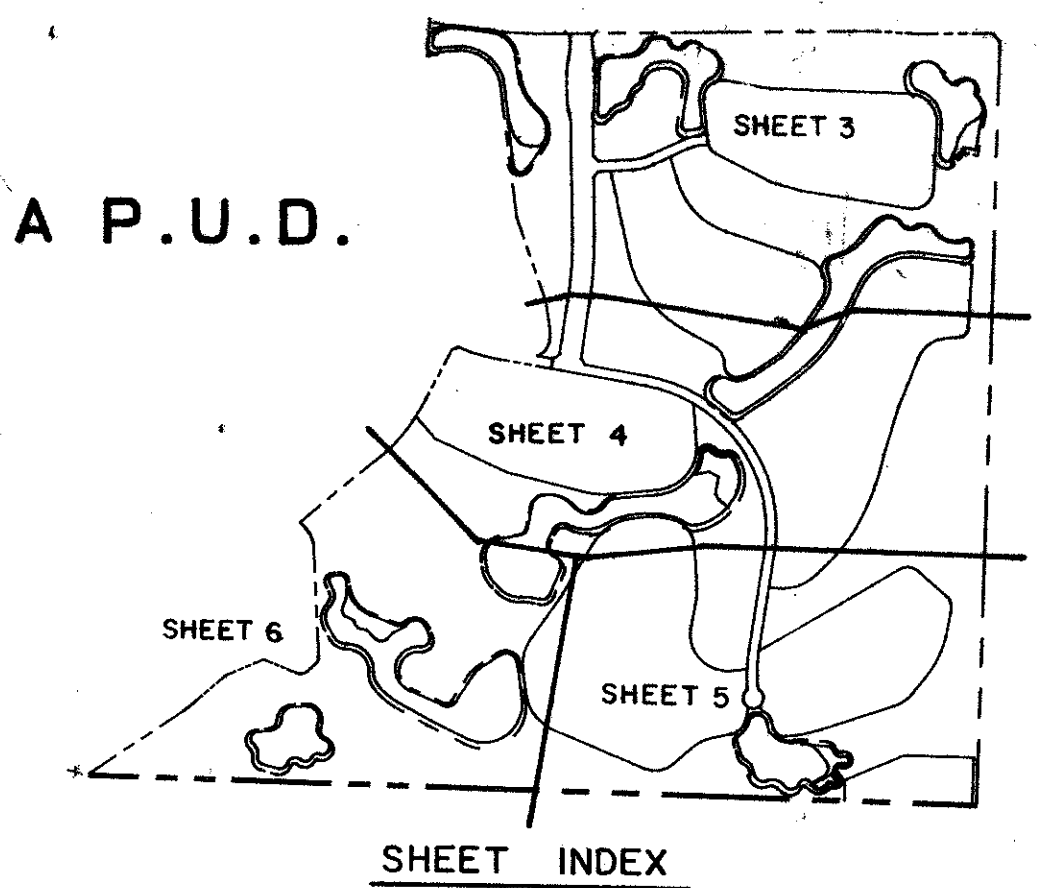
PART OF WYCLIFFE GOLF AND COUNTRY CLUB (FORMERLY KNOWN AS SUNDIAL COUNTRY CLUB), A P.U.D.
SITUATE IN SECTION 25, TOWNSHIP 44 SOUTH, RANGE 41 EAST
PALM BEACH COUNTY, FLORIDA

1989

SHEET 6 OF 6

13

STATE OF FLORIDA
COUNTY OF PALM BEACH
THIS PLAT WAS FILED FOR
RECORD _____
THIS _____ DAY OF _____
AD, 1989 AND DULY RECORDED
IN PLAT BOOK _____ ON PAGES
_____ AND _____
JOHN B. DUNKLE, CLERK
BY: _____, D.C.



TAZ 737
 SUBDIVISION # Wycliffe
 BOOK 62
 PAGE 13
 ORDER # 63
 FILE # RS 86-104
 FILE # 33467
 FILE # 33467

0520-001

62/13

STANLEY/WANTMAN, I.
2000 LOMBARD STREET, WEST PALM BEACH, FL 33407 (407) 842-7444

DRAWN S.T.K. DATE DEC. 1988
CHECKED R.B.P. SCALE 1"=100'
DRAWING NO. 09736PL

WYCLIFFE PLAT ONE
PART OF WYCLIFFE GOLF AND
COUNTRY CLUB P.U.D.

HOMELAND ROAD

NORTH R/W LINE 80' R/W FOR
HOMELAND ROAD (O.R.B. 5642, PG. 1593)

N 88° 26' 38" W 2457.23'