

A PORTION OF WHISPER WALK, A P.U.D.

WHISPER WALK SECTION "D"

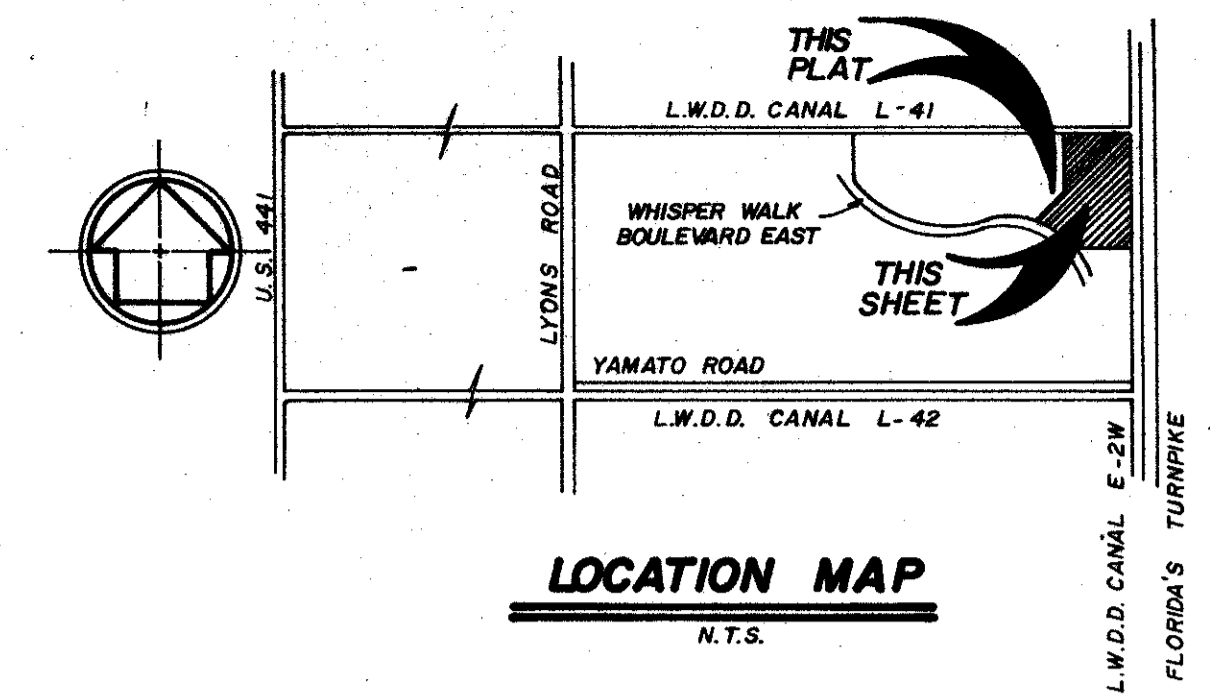
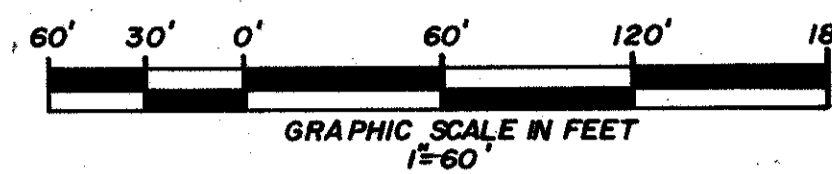
SITUATE IN SECTION 5, TOWNSHIP 47 SOUTH, RANGE 42 EAST, PALM BEACH COUNTY, FLORIDA. BEING A REPLAT OF A PORTION OF TRACT A OF THE BOUNDARY PLAT OF WHISPER WALK, A P.U.D. (PB. 43, PG. 189-191)

PREPARED BY:
CRAIG A. SMITH & ASSOCIATES
CONSULTING ENGINEERS & SURVEYOR'S
1000 WEST McNAB ROAD
POMPANO BEACH, FLORIDA, 33069
BY: **FREDERICK E. CONROD, III, P.L.S. No. 2816**
JULY 1987

SHEET 3 OF 3 SHEETS

18

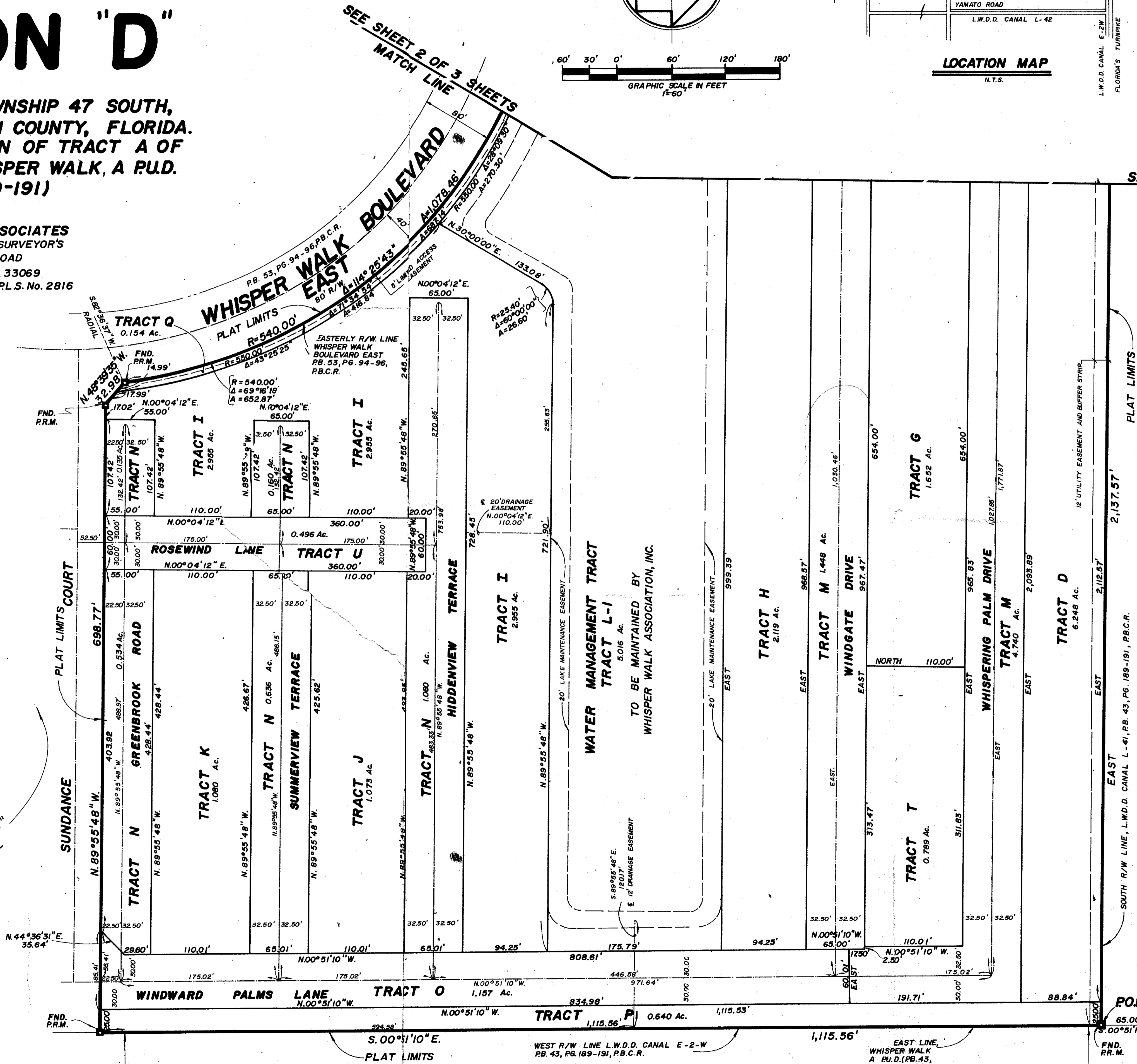
STATE OF FLORIDA COUNTY OF PALM BEACH } S.S.
THIS PLAT WAS FILED FOR RECORD AT _____, THIS DAY OF _____, 1988, A.D., AND DULY RECORDED IN PLAT BOOK No. _____ ON PAGES _____ AND JOHN B. DUNKLE, CLERK BY: _____, D.C.



SEE SHEET 2 OF 3 SHEETS MATCH LINE

SEE SHEET 2 OF 3 SHEETS MATCH LINE

- NOTES**
- BEARINGS SHOWN HEREON REFER TO THE EAST LINE OF THE BOUNDARY PLAT OF WHISPER WALK, A P.U.D. PB. 43 PG. 189-191, P.B.C.R., SAID BEARING BEING S.00°51'10"E.
 - PR.M. INDICATES PERMANENT REFERENCE MONUMENT.
 - P.C.P. INDICATES PERMANENT CONTROL POINT.
 - NO BUILDINGS OR ANY KIND OF CONSTRUCTION SHALL BE PLACED ON UTILITY OR DRAINAGE EASEMENT.
 - NO STRUCTURES, TREES OR SHRUBS SHALL BE PLACED ON DRAINAGE EASEMENTS, LAKE MAINTENANCE EASEMENTS OR UTILITY EASEMENTS FOR WATER AND SEWER.
 - APPROVAL OF LANDSCAPING ON UTILITY EASEMENTS OTHER THAN WATER OR SEWER SHALL BE ONLY WITH APPROVAL OF ALL UTILITIES OCCUPYING SAME.
 - WHERE UTILITY AND DRAINAGE EASEMENTS CROSS, DRAINAGE EASEMENTS SHALL TAKE PRECEDENCE.
 - IMPROVEMENTS NOT SHOWN.
 - THERE MAY BE ADDITIONAL RESTRICTIONS THAT ARE NOT RECORDED ON THIS PLAT THAT MAY BE FOUND IN THE PUBLIC RECORDS OF THE COUNTY.



WATER MANAGEMENT TRACT L-1
5.016 AC.
TO BE MAINTAINED BY
WHISPER WALK ASSOCIATION, INC.

0339-005
"Open schools see att 1 & letter 5/24/87"

P.O.C.
N.E. CORNER BOUNDARY PLAT OF WHISPER WALK, A P.U.D.
EAST LINE OF THE BOUNDARY PLAT OF WHISPER WALK, A P.U.D.

WHISPER WALK SECTION "D"

Handwritten notes and file numbers: RS 80-229, 752770, 0339-005, 5/24/87