

PLAT NO. 3 OF RIVER WALK

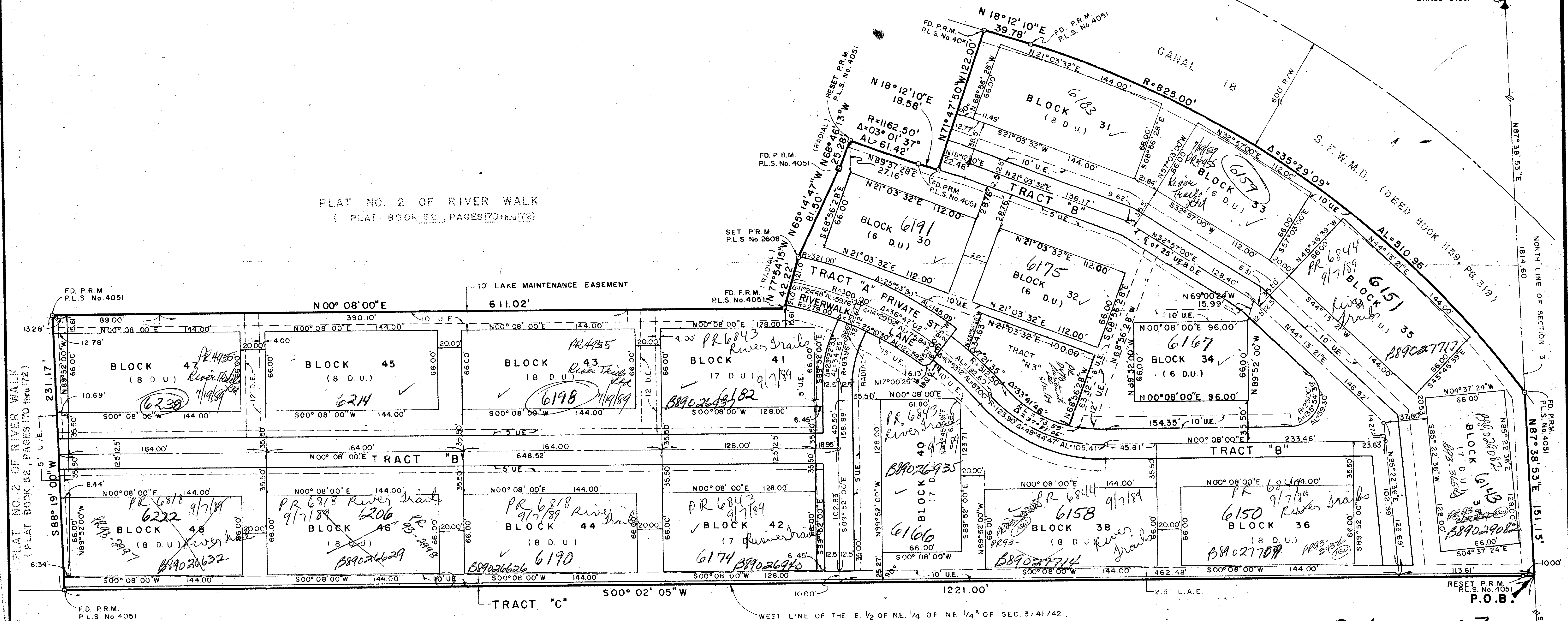
IN SECTIONS 3, TOWNSHIP 41 SOUTH, RANGE 42 EAST
PALM BEACH COUNTY, FLORIDA

SHEET 2 OF 2 APRIL, 1987

COUNTY OF PALM BEACH
STATE OF FLORIDA
This Plat was filed for record at M.
this day of
19 and duly recorded in Plat Book No.
on page
JOHN B. DUNKLE, Clerk, Circuit Court
By D.C.

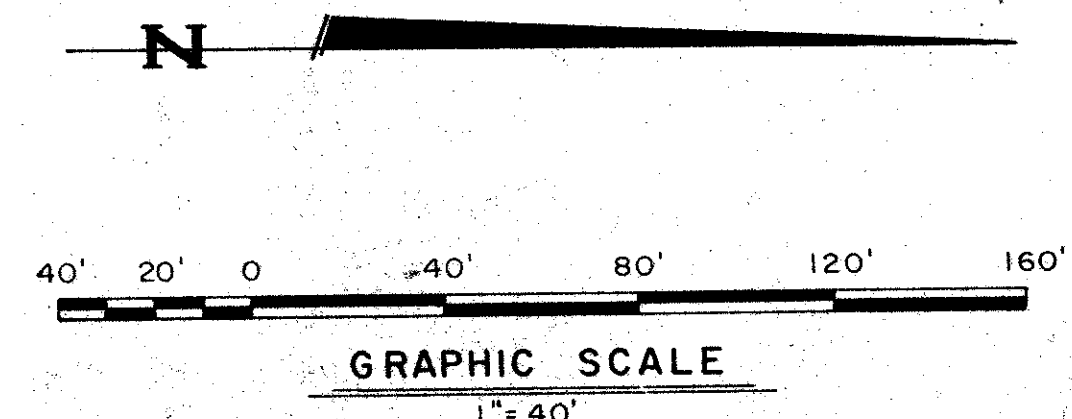
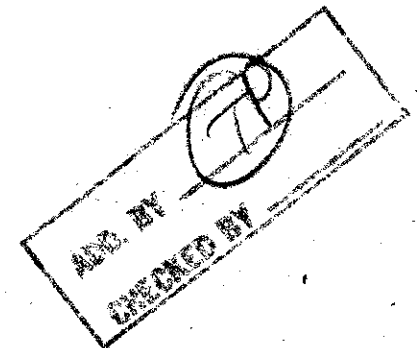
FD. P.B. COUNTY
BRASS DISC.

PLAT NO. 2 OF RIVER WALK
(PLAT BOOK 52, PAGES 170 thru 172)



70217
105B
RH
33/58
3/11/87

Riverwalk #3
37
105B
RH
33/58
3/11/87
SUBDIVISION #
BOOK 62
PAGE 26
FID NAME



NOT PLATTED

0412-003

62/37

Field Book No. Pg.	ROBERT E. OWEN & ASSOCIATES, INC. ENGINEERS - PLANNERS - SURVEYORS WEST PALM BEACH FLORIDA	PLAT NO. 3 OF RIVER WALK	Job No. 85-161
Design W. CHASE			Scale 1" = 40'
Drawn L. BISPOTT			Date APRIL, 1987
Checked W. MITZELFELD			Sheet 2
			File No. BF-2395-C