

BOCA CHASE - TRACT 9B

(A PORTION OF BOCA CHASE RIVIERA P.U.D.)

BEING A PORTION OF THE NORTHEAST ONE-QUARTER (1/4) OF SECTION 2, TOWNSHIP 47 SOUTH, RANGE 41 EAST, IN PALM BEACH COUNTY, FLORIDA.

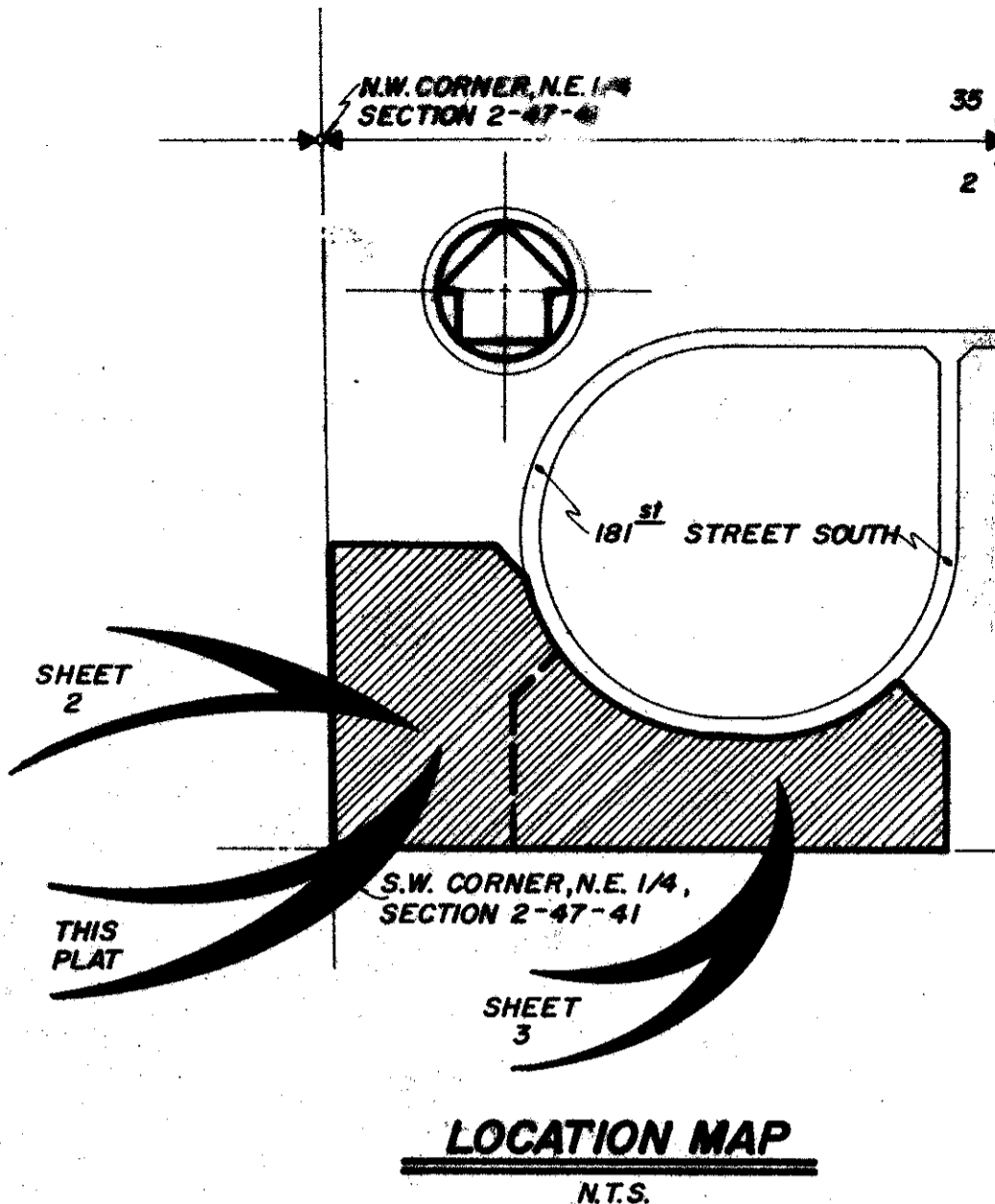
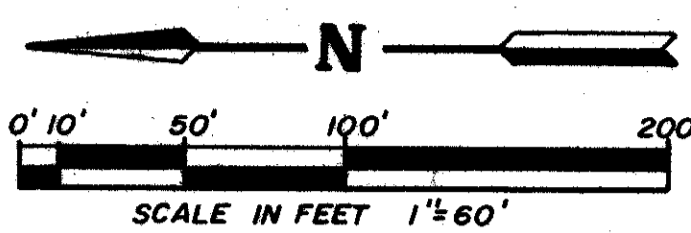
THIS INSTRUMENT PREPARED BY
LARRY BIRMINGHAM OF
DANIEL CARNAHAN
CONSULTING ENGINEERS, INC.
6191 W. ATLANTIC BLVD., MARGATE, FLA.
MAY 1988 8706010 S.W.

STATE OF FLORIDA }
COUNTY OF PALM BEACH } S.S.
THIS INSTRUMENT WAS FILED FOR
RECORD AT _____ THIS
DAY OF _____, 1988, A.D.,
AND DULY RECORDED IN PLAT BOOK
NO. _____ ON PAGE
AND
JOHN B. DUNKLE, CLERK
BY: _____, D.C.

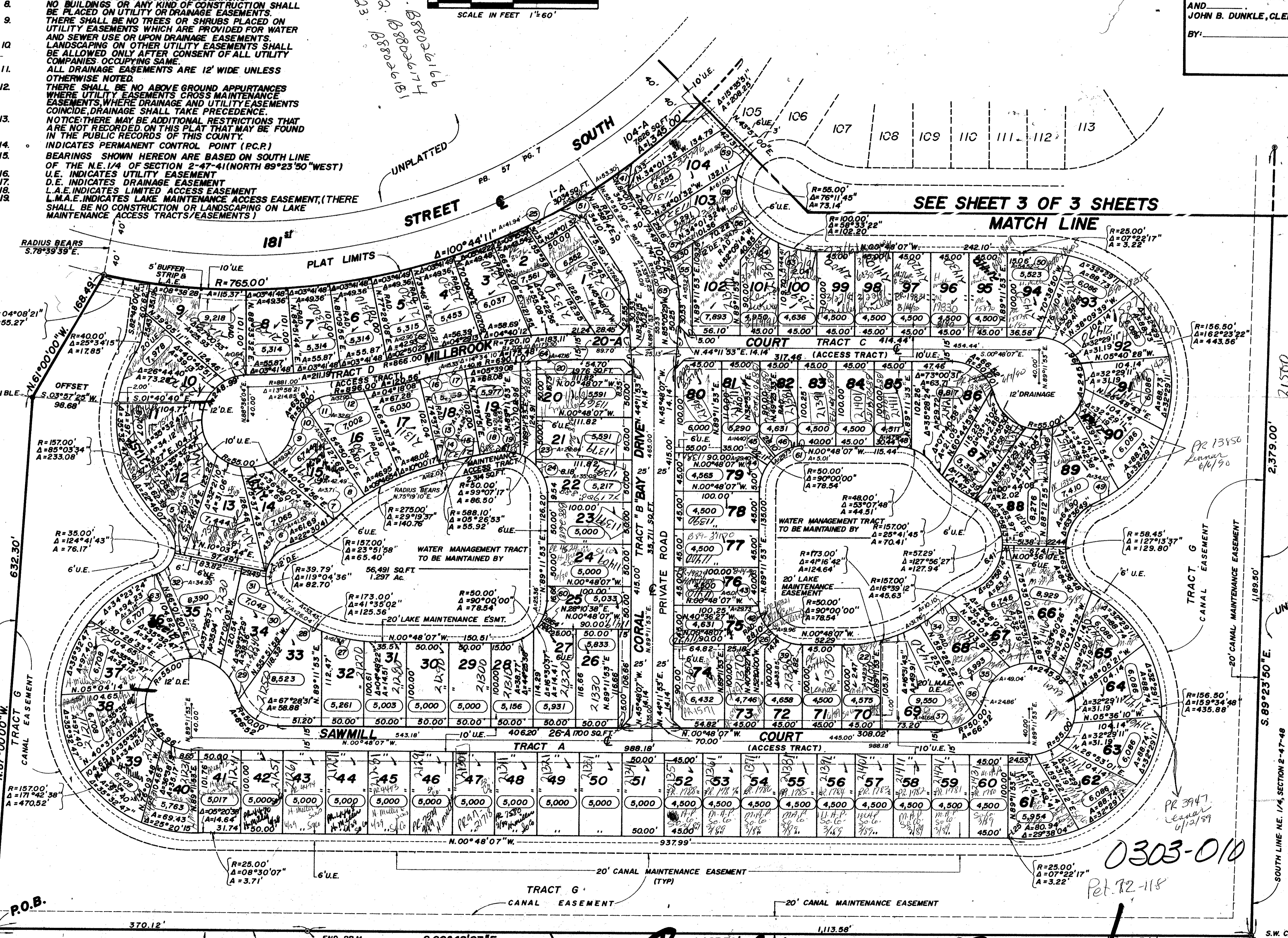
NOTES CONTINUED

20. THERE SHALL BE NO ABOVE GROUND APPURTANCES IN THE 6 FOOT UTILITY EASEMENT.

- NOTES**
- INDICATES PERMANENT REFERENCE MONUMENT (P.R.M.) ALL P.R.M.'S BEAR THE REGISTRATION NUMBER 4020 SHOWN THUS.
 - INDICATES LOT SQUARE FOOTAGE
 - INDICATES CURVE DATA REFERENCE.
 - INDICATES BLOCK DESIGNATION
 - INDICATES RADIAL
 - BUILDING SETBACK LINES SHALL BE AS REQUIRED BY PALM BEACH COUNTY ZONING REGULATIONS.
 - NO BUILDINGS OR ANY KIND OF CONSTRUCTION SHALL BE PLACED ON UTILITY OR DRAINAGE EASEMENTS.
 - THERE SHALL BE NO TREES OR SHRUBS PLACED ON UTILITY EASEMENTS WHICH ARE PROVIDED FOR WATER AND SEWER USE OR UPON DRAINAGE EASEMENTS.
 - LANDSCAPING ON OTHER UTILITY EASEMENTS SHALL BE ALLOWED ONLY AFTER CONSENT OF ALL UTILITY COMPANIES OCCUPYING SAME.
 - ALL DRAINAGE EASEMENTS ARE 12' WIDE UNLESS OTHERWISE NOTED.
 - THERE SHALL BE NO ABOVE GROUND APPURTANCES WHERE UTILITY EASEMENTS CROSS MAINTENANCE EASEMENTS, WHERE DRAINAGE AND UTILITY EASEMENTS COINCIDE, DRAINAGE SHALL TAKE PRECEDENCE.
 - NOTICE: THERE MAY BE ADDITIONAL RESTRICTIONS THAT ARE NOT RECORDED ON THIS PLAT THAT MAY BE FOUND IN THE PUBLIC RECORDS OF THIS COUNTY.
 - INDICATES PERMANENT CONTROL POINT (P.C.P.)
 - BEARINGS SHOWN HEREON ARE BASED ON SOUTH LINE OF THE N.E. 1/4 OF SECTION 2-47-41 (NORTH 89°23'50" WEST)
 - U.E. INDICATES UTILITY EASEMENT
 - D.E. INDICATES DRAINAGE EASEMENT
 - L.A.E. INDICATES LIMITED ACCESS EASEMENT
 - L.M.A.E. INDICATES LAKE MAINTENANCE ACCESS EASEMENT, (THERE SHALL BE NO CONSTRUCTION OR LANDSCAPING ON LAKE MAINTENANCE ACCESS TRACTS/EASEMENTS)



No.	Radius	Delta	Arc
1	65.00'	33°13'28"	37.69'
2			
3	690.00'	00°53'35"	10.76'
4	866.00'	00°02'32"	0.64'
5	35.00'	62°21'02"	38.03'
6	33.79'	59°47'47"	41.55'
7	157.00'	01°21'17"	3.71'
8	275.00'	08°51'07"	42.49'
9	55.00'	52°01'12"	49.94'
10	80.00'	35°45'06"	31.20'
11	80.00'	37°21'49"	32.61'
12	896.00'	02°25'37"	37.95'
13	275.00'	00°41'19"	3.31'
14	998.00'	00°41'27"	12.03'
15	588.10'	03°20'08"	34.24'
16	896.00'	00°55'50"	15.33'
17	690.10'	03°20'08"	40.18'
18	588.10'	02°06'45"	21.68'
19	50.00'	30°26'49"	26.57'
20	690.10'	03°54'55"	47.16'
21	25.00'	74°33'42"	32.53'
22	173.00'	14°13'49"	42.97'
23	50.00'	20°27'47"	24.84'
24	50.00'	40°12'42"	35.00'
25	765.00'	03°08'25"	41.84'
26	50.00'	11°24'53"	9.96'
27	173.00'	17°04'57"	51.58'
28	173.00'	11°04'19"	33.43'
29	50.00'	08°45'02"	7.64'
30	173.00'	08°37'24"	26.04'
31	39.79'	59°16'49"	41.17'
32	35.00'	57°10'58"	34.93'
33	157.00'	03°41'08"	13.10'
34	173.00'	10°31'10"	31.76'
35	55.00'	51°05'00"	48.04'
36	50.00'	28°29'17"	24.86'
37	50.00'	47°44'16"	41.66'
38	173.00'	01°49'50"	5.83'
39	50.00'	38°47'07"	33.85'
40	50.00'	10°08'02"	8.84'
41	765.00'	03°59'35"	53.50'
42	50.00'	38°03'55"	29.73'
43	50.00'	08°44'21"	5.01'
44	50.00'	33°41'24"	29.40'
45	50.00'	16°30'15"	14.40'
46	50.00'	34°03'59"	29.73'
47	25.00'	90°00'00"	39.27'
48	48.00'	17°39'24"	14.79'
49	156.50'	12°28'59"	34.10'
50	156.50'	13°57'33"	54.52'
51	765.00'	03°59'35"	53.50'
52	25.00'	66°25'19"	28.98'
53	100.00'	25°25'58"	44.51'
54	100.00'	13°12'14"	23.05'
55	125.00'	24°25'08"	53.27'
56	100.00'	19°54'29"	34.75'
57	125.00'	08°48'17"	19.21'
58	55.00'	63°36'07"	61.05'
59	55.00'	12°35'38"	12.09'
60	50.00'	23°03'47"	23.38'
61	50.00'	08°44'21"	5.01'
62	720.10'	01°01'49"	12.95'
63	35.00'	05°09'42"	3.15'
64	690.10'	01°33'59"	20.07'
65	125.00'	33°13'25"	72.48'



BOCA CHASE RIVIERA P.U.D.
SECTION 2-47-41
RANGE 41 EAST
TOWNSHIP 47 SOUTH
PALM BEACH COUNTY, FLORIDA

R.O.C.
N.W. CORNER,
N.E. 1/4, SECTION 2-47-41

0303-010
Ret. 12-118

BOCA CHASE - TRACT 9B
62/39

S.W. CORNER,
N.E. 1/4,
SECTION 2-47-41
FND. P.R.M.
NO. 3550