

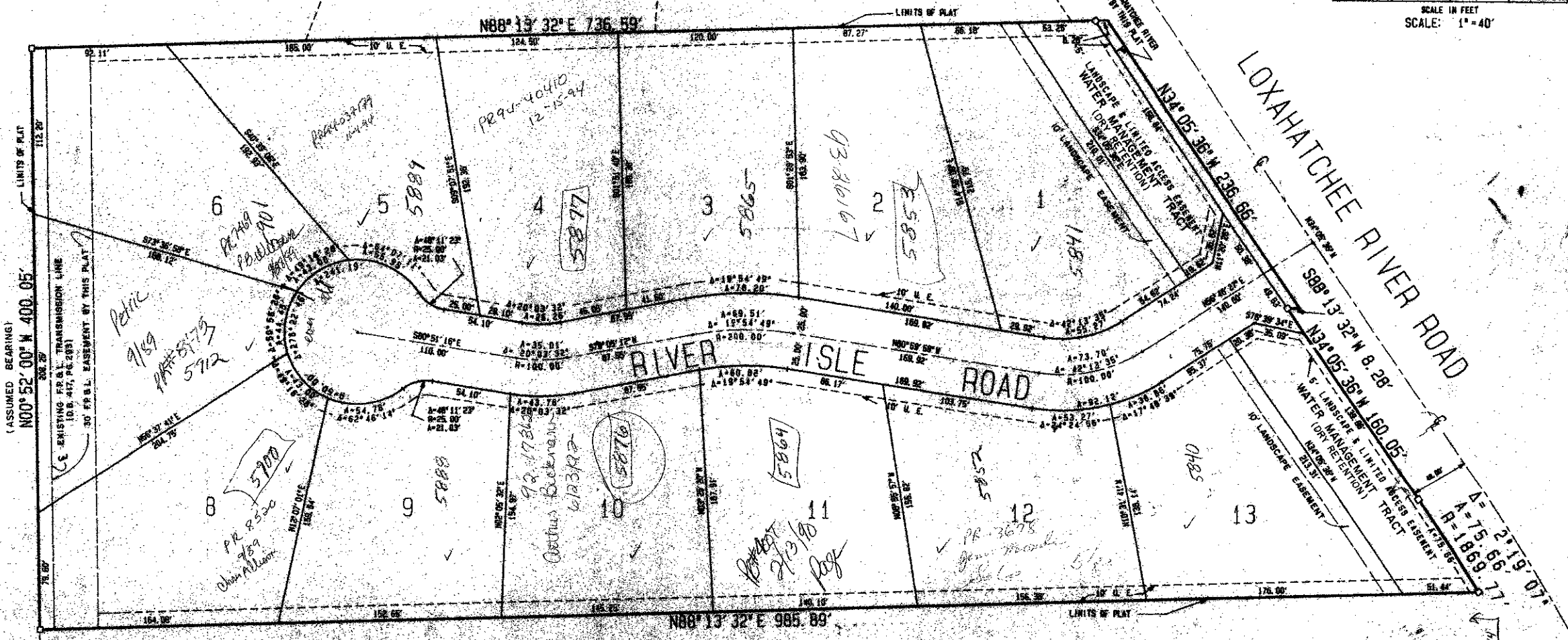
PLAT OF RIVER ISLE

BEING A PORTION OF SECTION 26, TOWNSHIP 40 SOUTH, RANGE 42 EAST, PALM BEACH COUNTY, FLORIDA. OCTOBER, 1987



RIVERSIDE ACRES PG. 32, PG. 101

FIRST ADDITION
PLAT NO. 1 EAGLE'S NEST
P. B. 39 PG. 10



NOT PLATTED

0532-001

62/54

PLAT OF	
RIVER ISLE	
DATE	FILE NO.
APPROVED BY	DATE