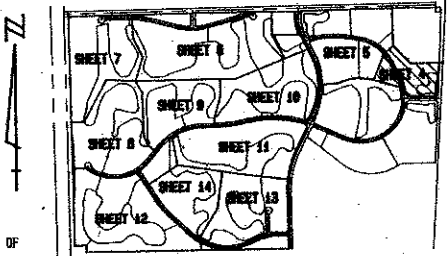
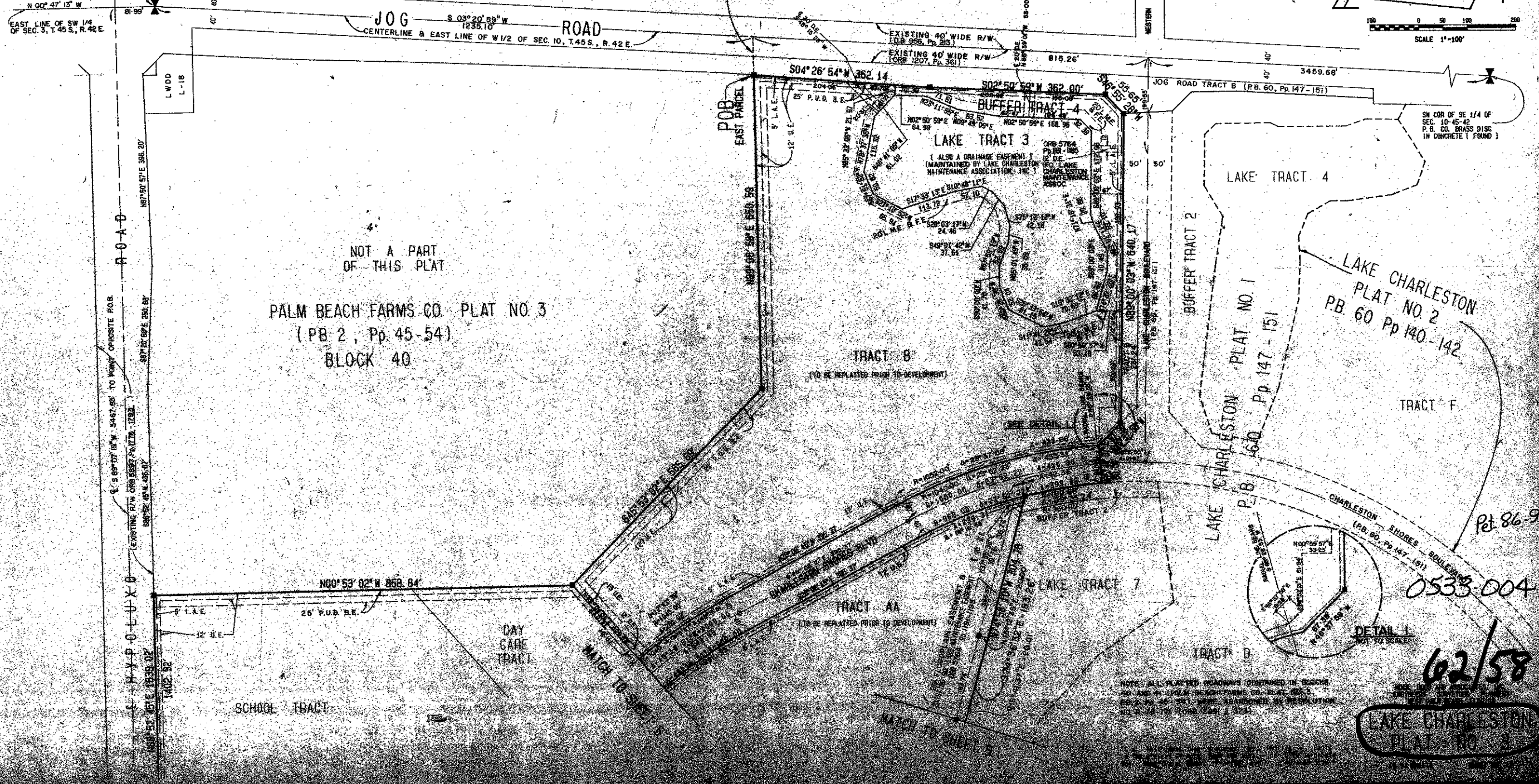
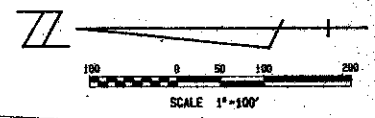


A PART OF LAKE CHARLESTON PLANNED UNIT DEVELOPMENT
LAKE CHARLESTON PLAT NO. 3
IN 14 SHEETS SHEET 4
JUNE 1988



N.E. COR. OF N.W. 1/4 OF SEC. 10-45-42 P.B. CO. BRASS DISC IN CONCRETE (FOUND)
N 00° 47' 15" W 91.99'
EAST LINE OF SW 1/4 OF SEC. 3, T.45 S., R.42 E.

SHEET INDEX



NOT A PART OF THIS PLAT
PALM BEACH FARMS CO. PLAT NO. 3
(PB 2, Pp 45-54)
BLOCK 40

ROAD

WOOD L-18
EXISTING 40' WIDE R/W (PB 58, Pp 215)
EXISTING 40' WIDE R/W (PB 58, Pp 215)

POB EAST PANEL

POB WEST PANEL

0533-004

62/58

LAKE CHARLESTON PLAT NO. 3

Handwritten notes in the bottom left corner, including '20' Utilities', 'ATS', '33-4-07', and '772-439'.

NOTE: ALL PLATTED ROADWAYS SHOWN IN BLOCKS 40 AND 41 PALM BEACH FARMS CO. PLAT NO. 3, PB 2, Pp 45-54, SHALL BE MAINTAINED BY THE ASSOCIATION OF HOMEOWNERS (AHO) OF LAKE CHARLESTON.

DETAIL I NOT TO SCALE

Pct 86-96

CHARLESTON SHORES BOULEVARD (PB 60, Pp 147-151)

LAKE CHARLESTON PLAT NO. 1 (PB 60, Pp 147-151)

LAKE CHARLESTON PLAT NO. 2 (PB 60, Pp 140-142)

TRACT B (TO BE REPLATTED PRIOR TO DEVELOPMENT)

TRACT AA (TO BE REPLATTED PRIOR TO DEVELOPMENT)

SCHOOL TRACT

DAY CARE TRACT

MATCH TO SHEET 3

MATCH TO SHEET 5