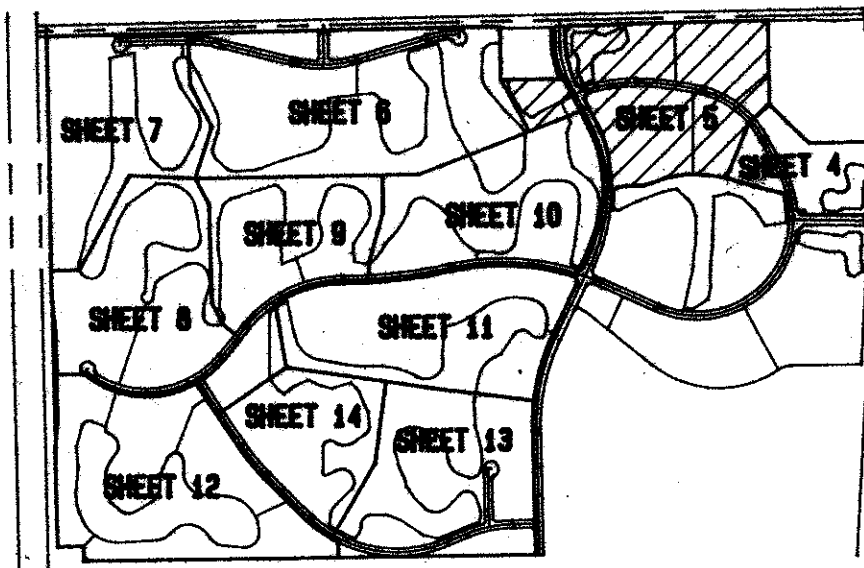
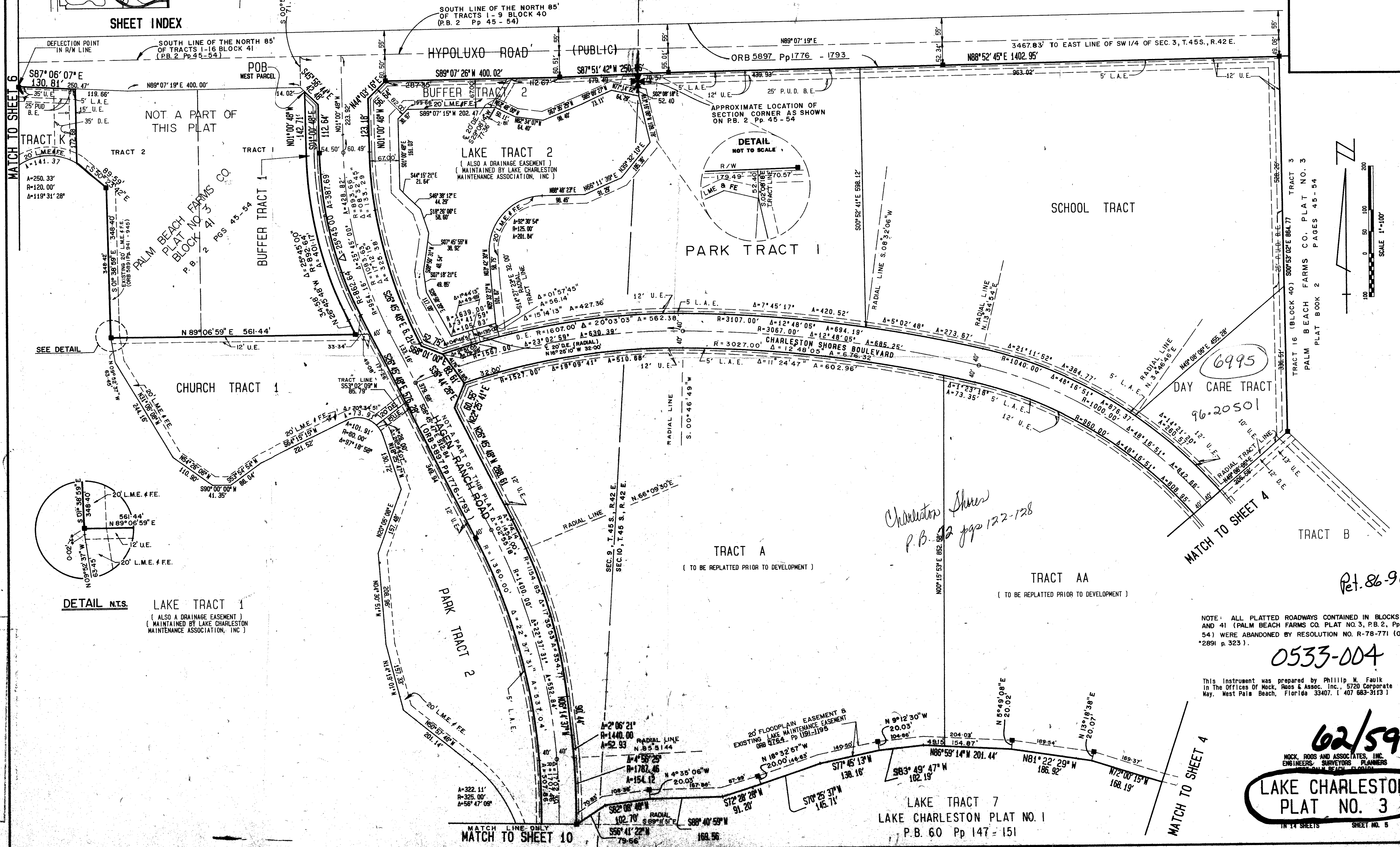


A PART OF LAKE CHARLESTON PLANNED UNIT DEVELOPMENT LAKE CHARLESTON PLAT NO. 3 IN 14 SHEETS SHEET 5

JUNE 1988



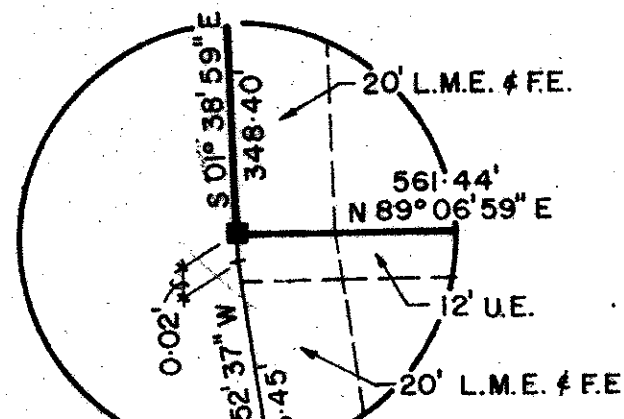
SHEET INDEX



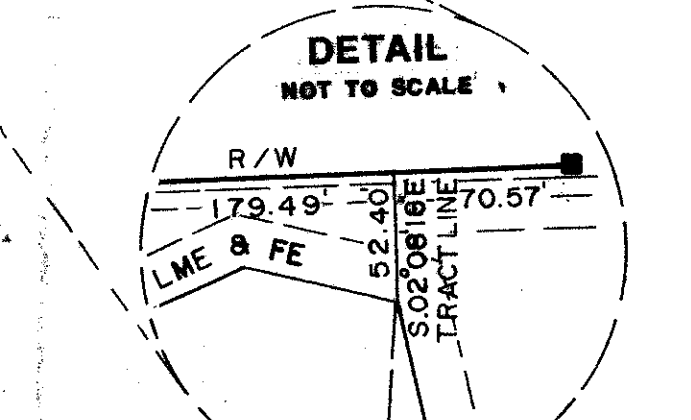
MATCH TO SHEET 6

MATCH TO SHEET 4

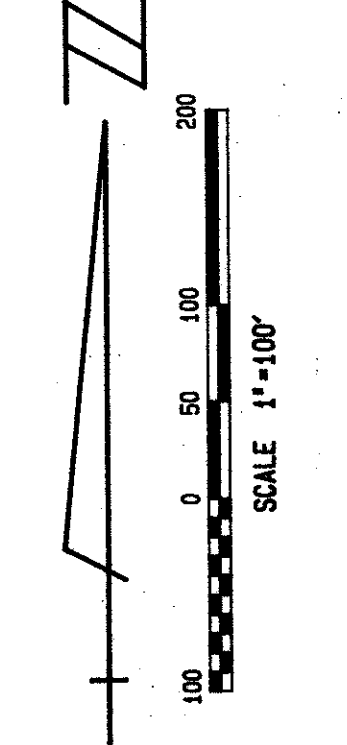
MATCH TO SHEET 4



DETAIL N.T.S.
LAKE TRACT 1
(ALSO A DRAINAGE EASEMENT)
(MAINTAINED BY LAKE CHARLESTON
MAINTENANCE ASSOCIATION, INC)



DETAIL
NOT TO SCALE



SCALE 1"=100'

3,45,5,8,9,10,11,12,13,14,15,16,17,18,19,20,21,22,23,24,25,26,27,28,29,30,31,32,33,34,35,36,37,38,39,40,41,42,43,44,45,46,47,48,49,50,51,52,53,54,55,56,57,58,59,60,61,62,63,64,65,66,67,68,69,70,71,72,73,74,75,76,77,78,79,80,81,82,83,84,85,86,87,88,89,90,91,92,93,94,95,96,97,98,99,100
LAKE CHARLESTON # 3
57
R/S
33467
86-96
PUB NAME

*Charleston Shores
P.B. 12 pgs 122-128*

6995

96-20501

Pet. 86-96

NOTE: ALL PLATTED ROADWAYS CONTAINED IN BLOCKS 40 AND 41 (PALM BEACH FARMS CO. PLAT NO. 3, P.B. 2, Pp. 45-54) WERE ABANDONED BY RESOLUTION NO. R-78-771 (ORB *2891 p. 323).

0533-004

This instrument was prepared by Phillip M. Faulk in the Offices of Mock, Paos & Assoc., Inc., 5720 Corporate Way, West Palm Beach, Florida 33407. (407 663-3113)

62/59
MOCK, PAOS AND ASSOCIATES, INC.
ENGINEERS, SURVEYORS, PLANNERS
WEST PALM BEACH, FLORIDA
**LAKE CHARLESTON
PLAT NO. 3**
IN 14 SHEETS SHEET NO. 5