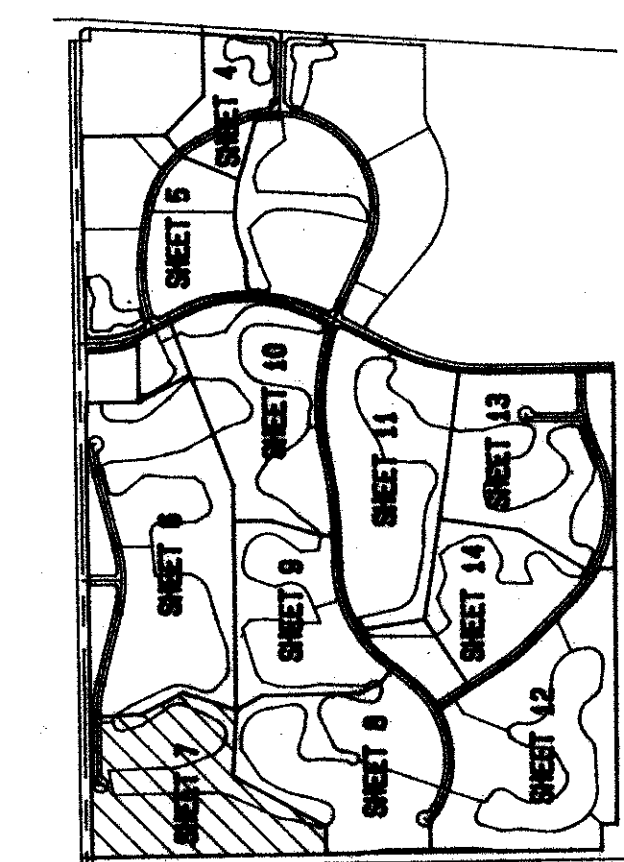
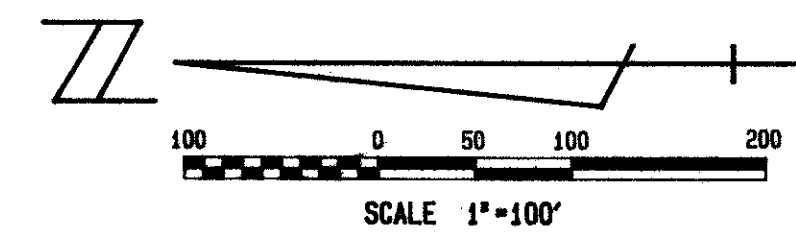
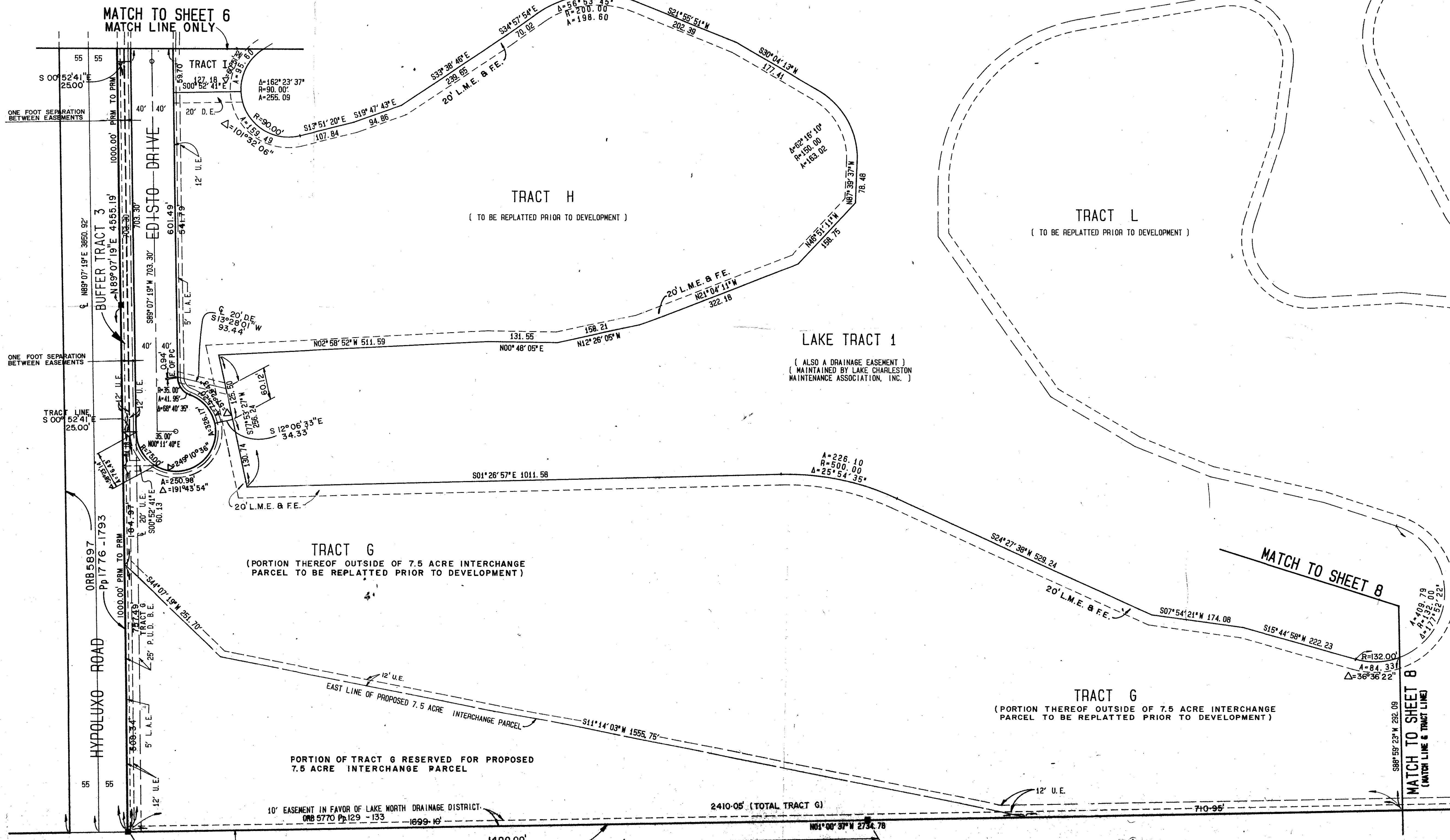


A PART OF LAKE CHARLESTON PLANNED UNIT DEVELOPMENT LAKE CHARLESTON PLAT NO. 3 IN 14 SHEETS SHEET NO. 7

JUNE 1988

LAKE TRACT I
SEE SHEET 6

LAKE TRACT I
SEE SHEET 9



NOTE: ALL PLATTED ROADWAYS CONTAINED IN BLOCKS 40 AND 41 (PALM BEACH FARMS CO. PLAT NO. 3, P.B. 2 Pp. 45-54) WERE ABANDONED BY RESOLUTION NO. R-78-771 (ORB 2891 a. 323)

TRACT L
0533-004

62/61
MOCK, ROOS AND ASSOCIATES, INC.
ENGINEERS SURVEYORS PLANNERS
WEST PALM BEACH, FLORIDA
**LAKE CHARLESTON
PLAT NO. 3**
IN 14 SHEETS SHEET NO. 7

Subdivision # Lake Charleston # 3
BOOK 62, PAGE 61
FLOOR PLANS 170A, 170B, 170C, 170D, 170E, 170F, 170G, 170H, 170I, 170J, 170K, 170L, 170M, 170N, 170O, 170P, 170Q, 170R, 170S, 170T, 170U, 170V, 170W, 170X, 170Y, 170Z
RTS 49
86-94
3/15/88
3/15/88
45/142
772-439

L.W.D. E-2-E
(ORB 3289 Pp. 49-54)
(ORB 3289 Pp. 55-59)

FLORIDA'S TURNPIKE

This instrument was prepared by Phillip M. Faulk
in the Office of Mock, Roos & Assoc., Inc., 5720 Corporate
Way, West Palm Beach, Florida 33407. (407 683-3113)

FLORIDA STATE TURNPIKE AUTHORITY SUNSHINE
STATE PARKWAY RIGHT-OF-WAY MAP
STA. 2126+13-91 TO STA. 2742+94-41
PALM BEACH COUNTY (SHEETS 7 & 8 OF 13)