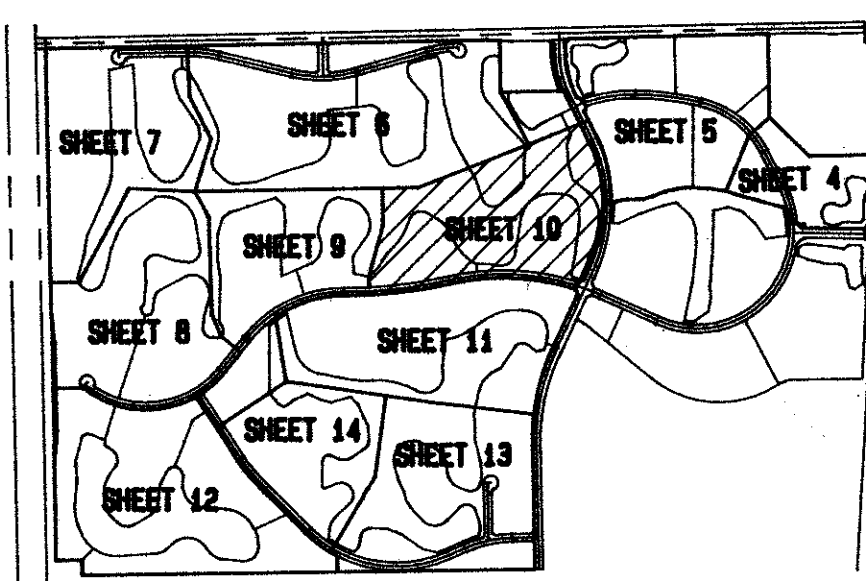


A PART OF LAKE CHARLESTON PLANNED UNIT DEVELOPMENT
LAKE CHARLESTON PLAT NO. 3
 IN 14 SHEETS SHEET NO. 10

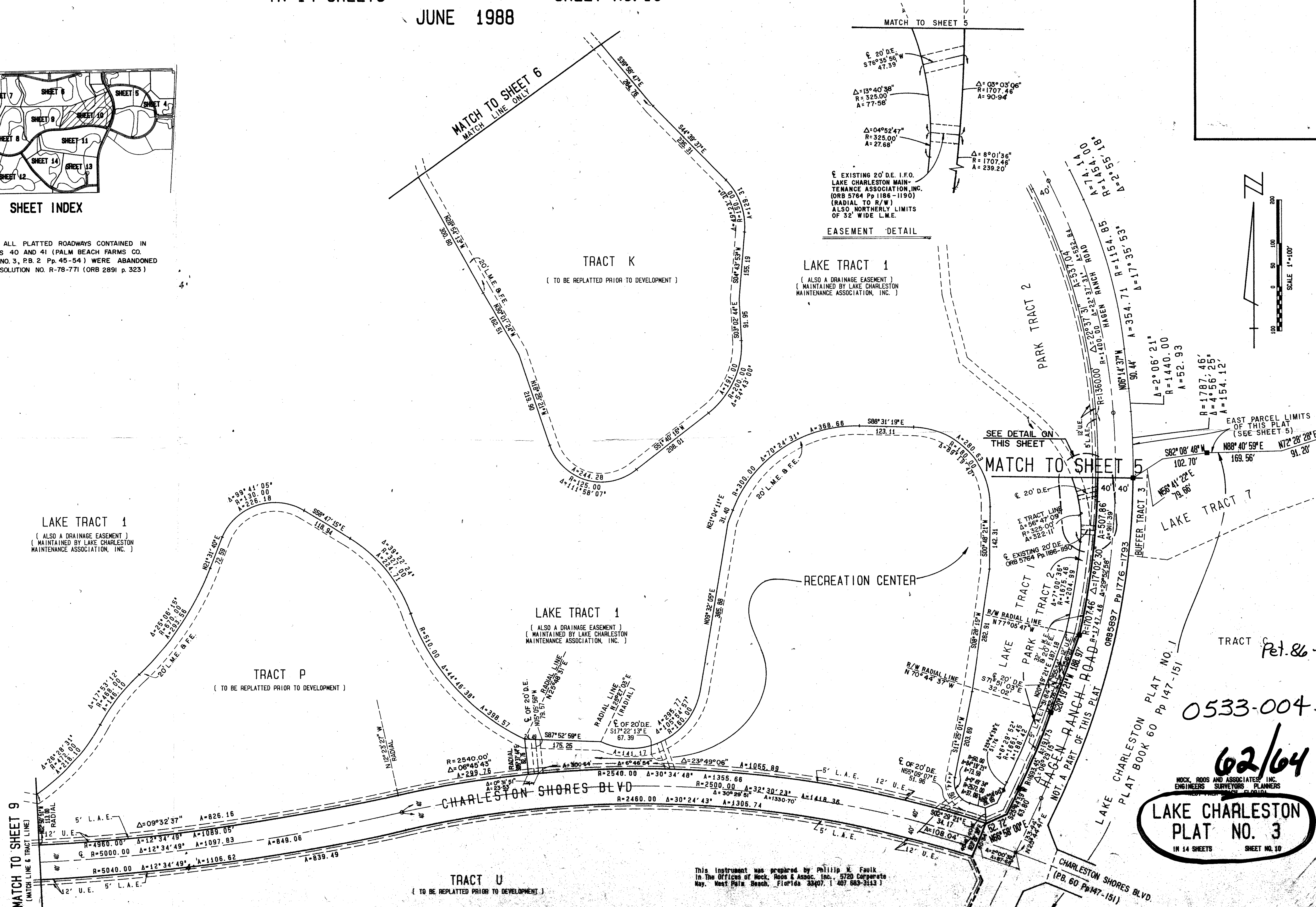
64

JUNE 1988



SHEET INDEX

NOTE: ALL PLATTED ROADWAYS CONTAINED IN BLOCKS 40 AND 41 (PALM BEACH FARMS CO. PLAT NO. 3, P.B. 2 Pp. 45-54) WERE ABANDONED BY RESOLUTION NO. R-78-771 (ORB 2891 p. 323)



Submittal to Lake Charleston #3
 BOOK 62 B
 FLOOR PLAN
 49
 86-96
 3,853,830
 170A
 4185A
 RTS
 95/42
 33467
 TAZ 439

This instrument was prepared by Philip M. Faulk in the Offices of Rock, Root & Assoc. Inc., 5720 Corporate Way, West Palm Beach, Florida 33407. 1 407 683-3113

0533-004
 62/64
LAKE CHARLESTON PLAT NO. 3
 IN 14 SHEETS SHEET NO. 10