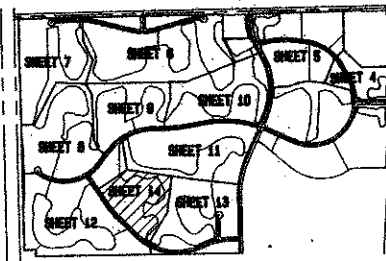
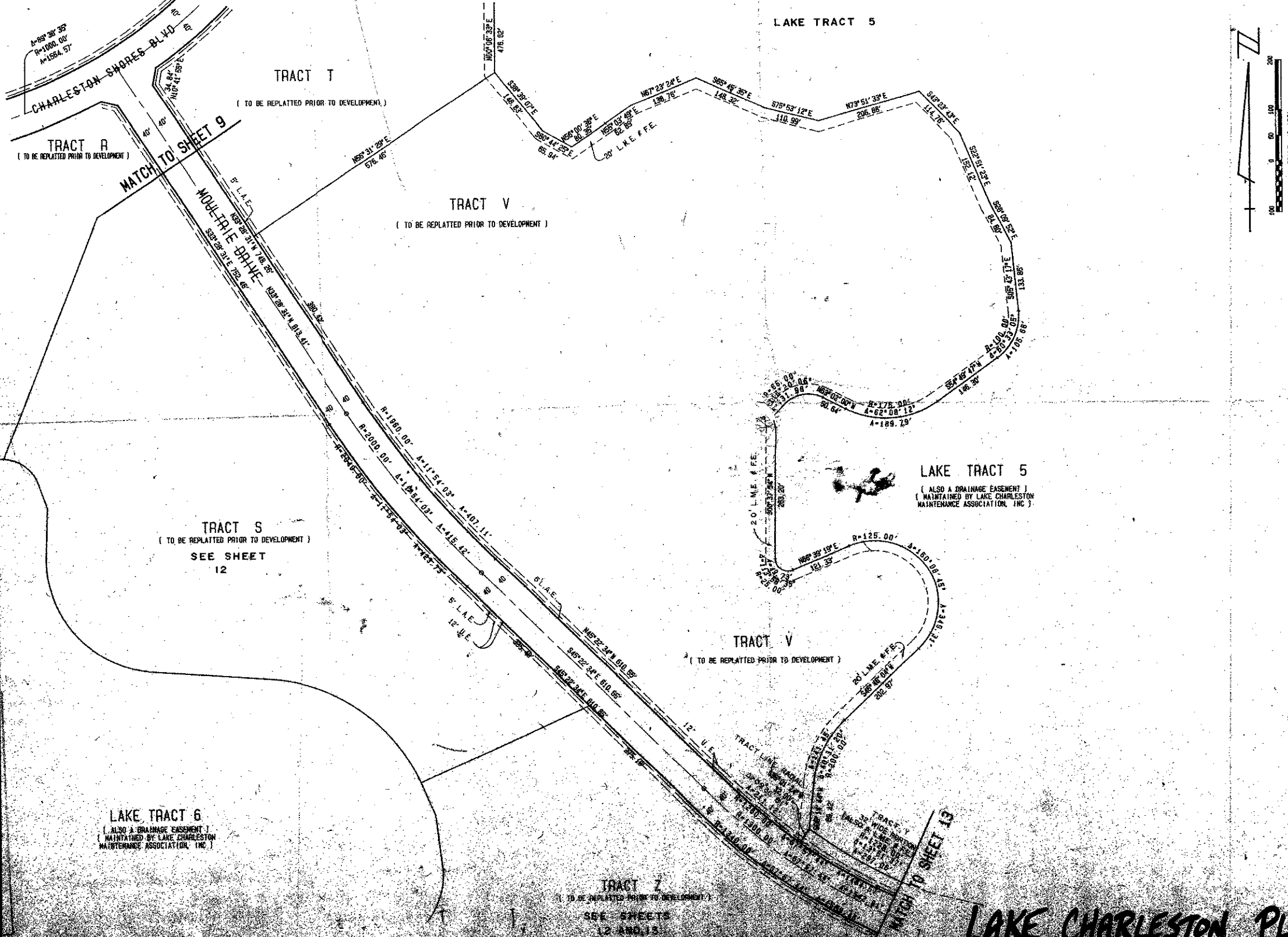


A PART OF LAKE CHARLESTON PLANNED UNIT DEVELOPMENT
LAKE CHARLESTON PLAT NO. 3
IN 14 SHEETS SHEET NO. 14
JUNE 1988



SHEET INDEX



Handwritten notes:
M 50-96
RIS 33467
772 439

NOTE: ALL PLATTED ROADWAYS CONTAINED IN BLOCKS 40 AND 41 (PALM BEACH FARMS CO. PLAT NO. 3, PB. 2 Pp. 45-54) WERE ABANDONED BY RESOLUTION NO. R-78-771 (ORB 2891 p. 323)

Handwritten: Pet. 86-96

Handwritten: 6/2/68

This instrument was prepared by Phillip M. Farris in the Office of Notary Public and Assoc., Inc., 5720 Concorde Way, West Palm Beach, Florida 33407, (407) 683-9110

0533-004

WICK AND ASSOCIATES, INC.
ENGINEERS, ARCHITECTS, PLANNERS
WEST PALM BEACH, FLORIDA

LAKE CHARLESTON
PLAT NO. 3

LAKE CHARLESTON PLAT No. 3