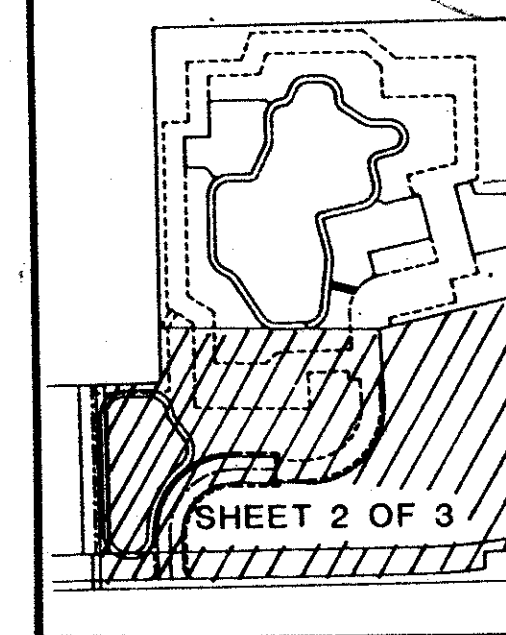


PALM GLADE DEVELOPMENT P.U.D. - PHASES A & B

IN PART OF SECTION 6, TOWNSHIP 44 SOUTH, RANGE 37 EAST
 PALM BEACH COUNTY, FLORIDA
 MAY - 1988 ---- SHEET 2 OF 3

PREPARED BY:

MICHAEL G. PURMORT
MICHAEL G. PURMORT & ASSOCIATES, INC.
 LAND SURVEYORS - PLANNERS
 1287 EAST NEWPORT CENTER DRIVE, SUITE 211
 DEERFIELD BEACH, FLORIDA, 33442

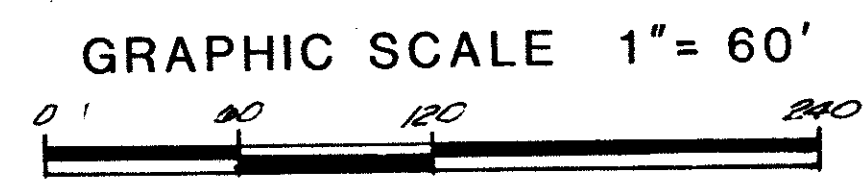
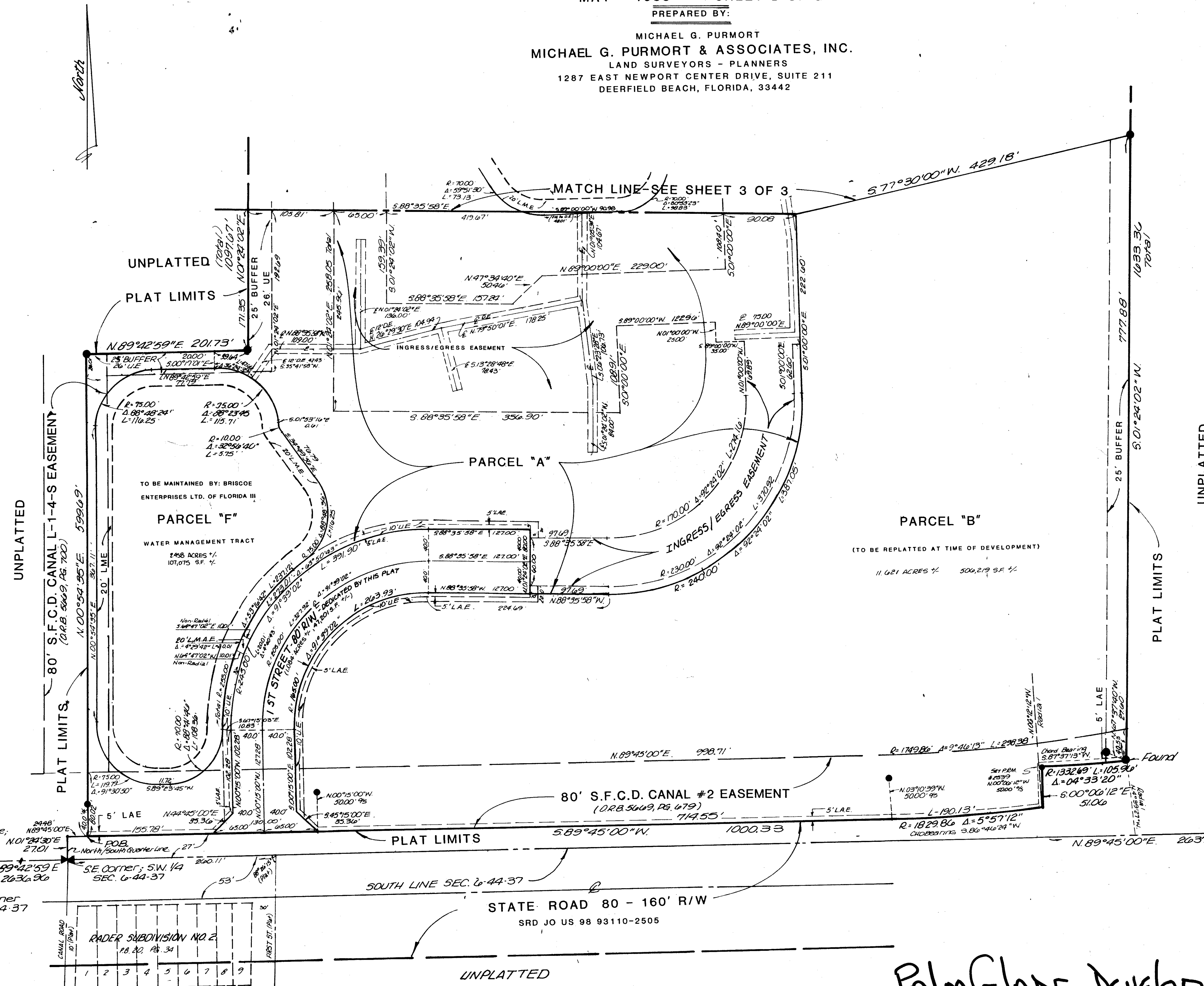


KEY MAP

STATE OF FLORIDA
 COUNTY OF PALM BEACH
 This plat was filed for
 record at _____ M. this _____ day
 of _____ 1988, and duly
 recorded in Plat Book No. _____
 on Page _____
 JOHN B. DUNKLE
 Clerk Circuit Court
 By _____ D.C.

84

Palm Glade Development PUD
 Phases A & B
 106
 FM 88-43 TAZ
 33430
 Palm Glade Dev. PUD
 6/4/87



62/84
 0531-001
 PALM GLADE DEVELOPMENT PUD PHASES A & B

Pt. 88-48

RADER SUBDIVISION NO. 2
 18.80, PG. 34

1	2	3	4	5	6	7	8	9
---	---	---	---	---	---	---	---	---