

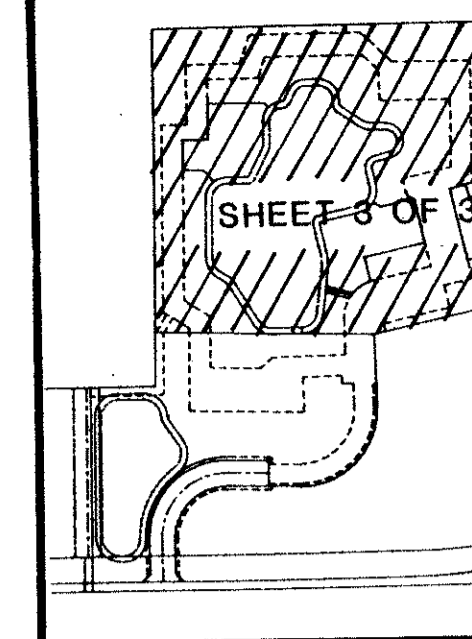
PALM GLADE DEVELOPMENT P.U.D. - PHASES A & B

IN PART OF SECTION 6, TOWNSHIP 44 SOUTH, RANGE 37 EAST
 PALM BEACH COUNTY, FLORIDA
 MAY - 1988 - SHEET 3 OF 3

PREPARED BY:

MICHAEL G. PURMORT
MICHAEL G. PURMORT & ASSOCIATES, INC
 LAND SURVEYORS - PLANNERS
 1287 EAST NEWPORT CENTER DRIVE, SUITE 211
 DEERFIELD BEACH, FLORIDA, 33442

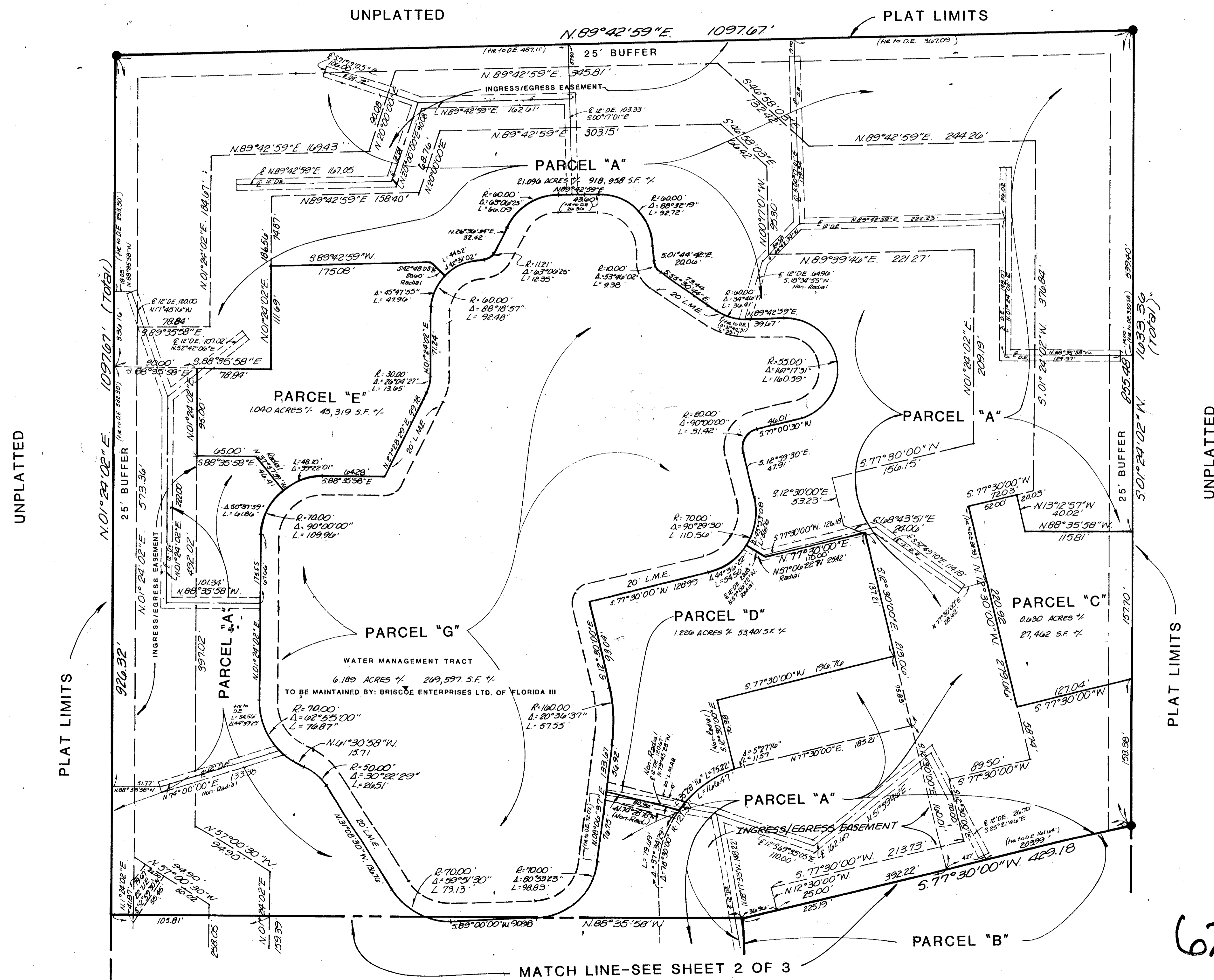
542



85

STATE OF FLORIDA
 COUNTY OF PALM BEACH
 This plat was filed for
 record at _____ M. this
 day of _____ 1988, and duly
 recorded in Plat Book No. _____
 on Page _____
 JOHN B. DUNKLE
 Clerk Circuit Court
 By _____ D.C.

North



REVISION * Palm Glade Dev. P.U.D.
 SHEET 85 - Phases A & B
 62
 204
 RM 88-48 772
 3379A
 Palm Glade Dev. P.U.D.
 6/14/87

GRAPHIC SCALE 1" = 60'

62/85 0531-001

Plat 88-48

Palm Glade Development Phases A+B