

THE POLO CLUB OPEN SPACE PLAT SIX

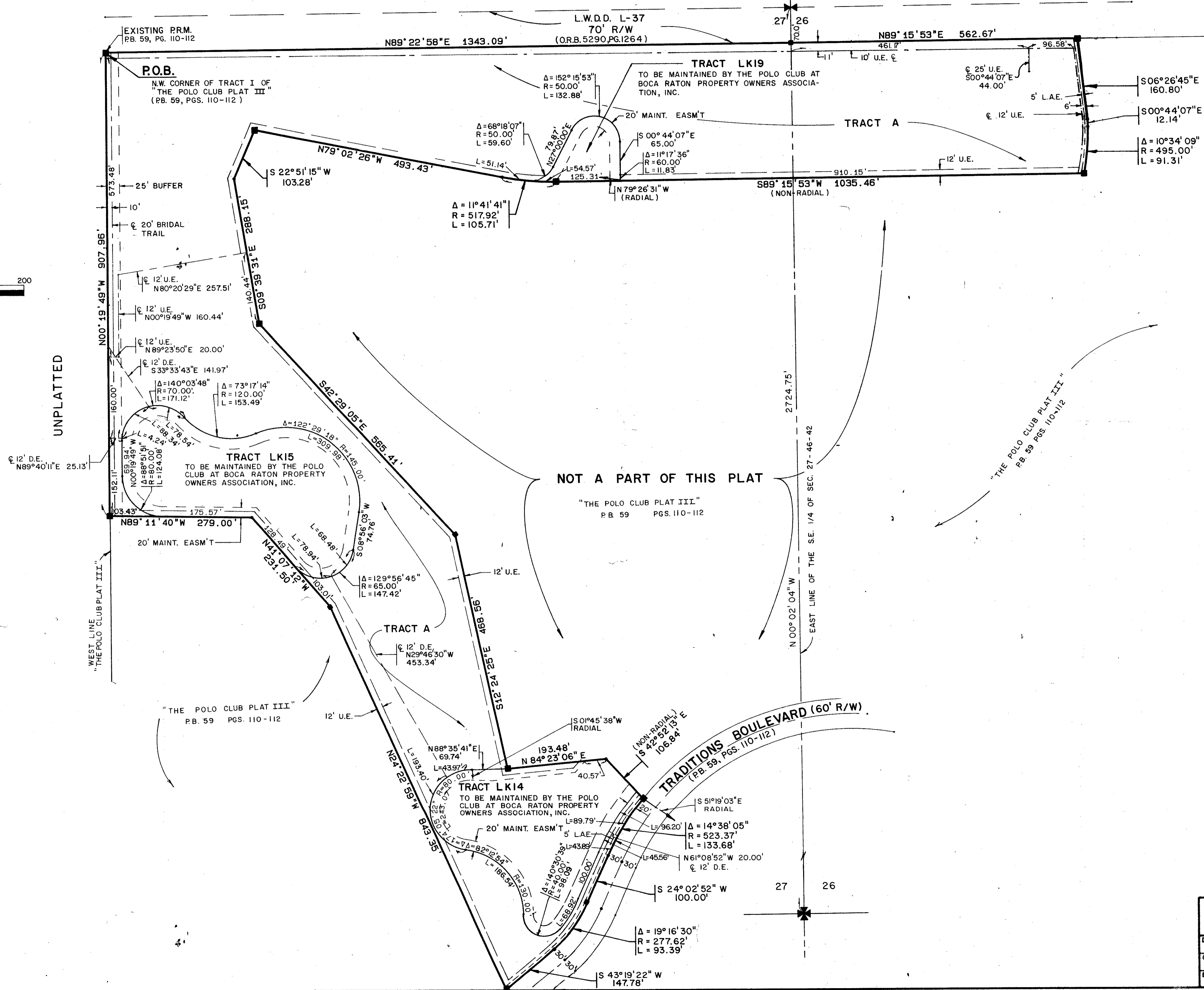
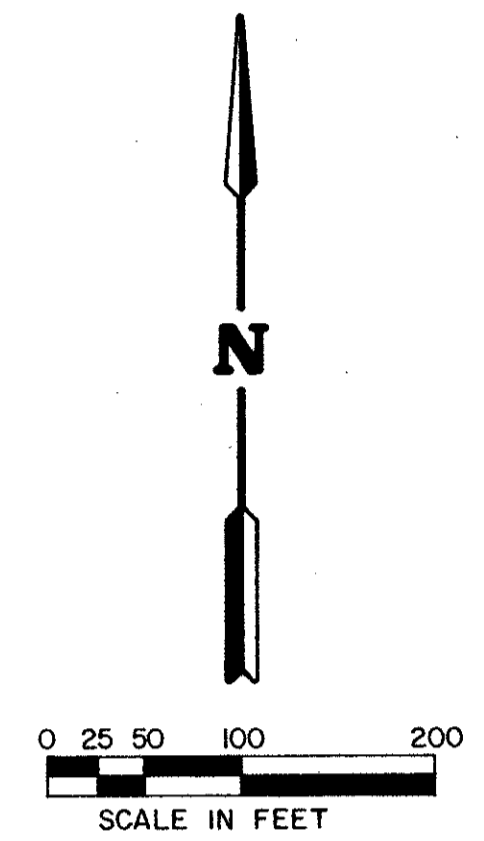
PART OF THE POLO CLUB P.U.D.
BEING A REPLAT OF A PORTION OF TRACT I OF "THE POLO CLUB PLAT III" (P.B. 59 PGS. 110 - 112)
SITUATE IN SECTIONS 26 AND 27, TOWNSHIP 46 SOUTH, RANGE 42 EAST
PALM BEACH COUNTY, FLORIDA.

1989

SHEET 2 OF 2

STATE OF FLORIDA
COUNTY OF PALM BEACH
THIS PLAT WAS FILED FOR
RECORD _____ DAY OF _____
AD, 1989 AND DULY RECORDED
IN PLAT BOOK _____ ON PAGES
_____ AND _____
JOHN B. DUNKLE, CLERK
BY: _____, D.C.

CIRCUIT COURT SEAL



UNPLATTED

NOT A PART OF THIS PLAT

62
37
89
2157
TRAZ
33445
Polo Club PUD
26127/146/42

Ret. 84-71

0436-011

62/89

STANLEY/WANTMAN, INC.
2000 LOMBARD STREET, WEST PALM BEACH, FL 33407-0000 842-7444

DRAWN	T.L.N.	DATE	JUNE, 1988
CHECKED	W.B.H.	SCALE	1"=100'
DRAWING NO.	097430P6		

THE POLO CLUB OPEN SPACE PLAT SIX

Rev. All De Change Book 12/5/88-J.C.F.
Rev. Add DE 5/31/88-MHC