

PALMETTO PARK WOODS

A PLANNED UNIT DEVELOPMENT
BEING A REPLAT OF THE NORTH 520 FEET OF TRACTS 100, 101, AND 102, BLOCK 78
PALM BEACH FARMS COMPANY PLAT NO.3 AS RECORDED IN PLAT BOOK 2, PAGES 45-54
LYING IN SECTION 19, TOWNSHIP 47 SOUTH, RANGE 42 EAST
PALM BEACH COUNTY, FLORIDA

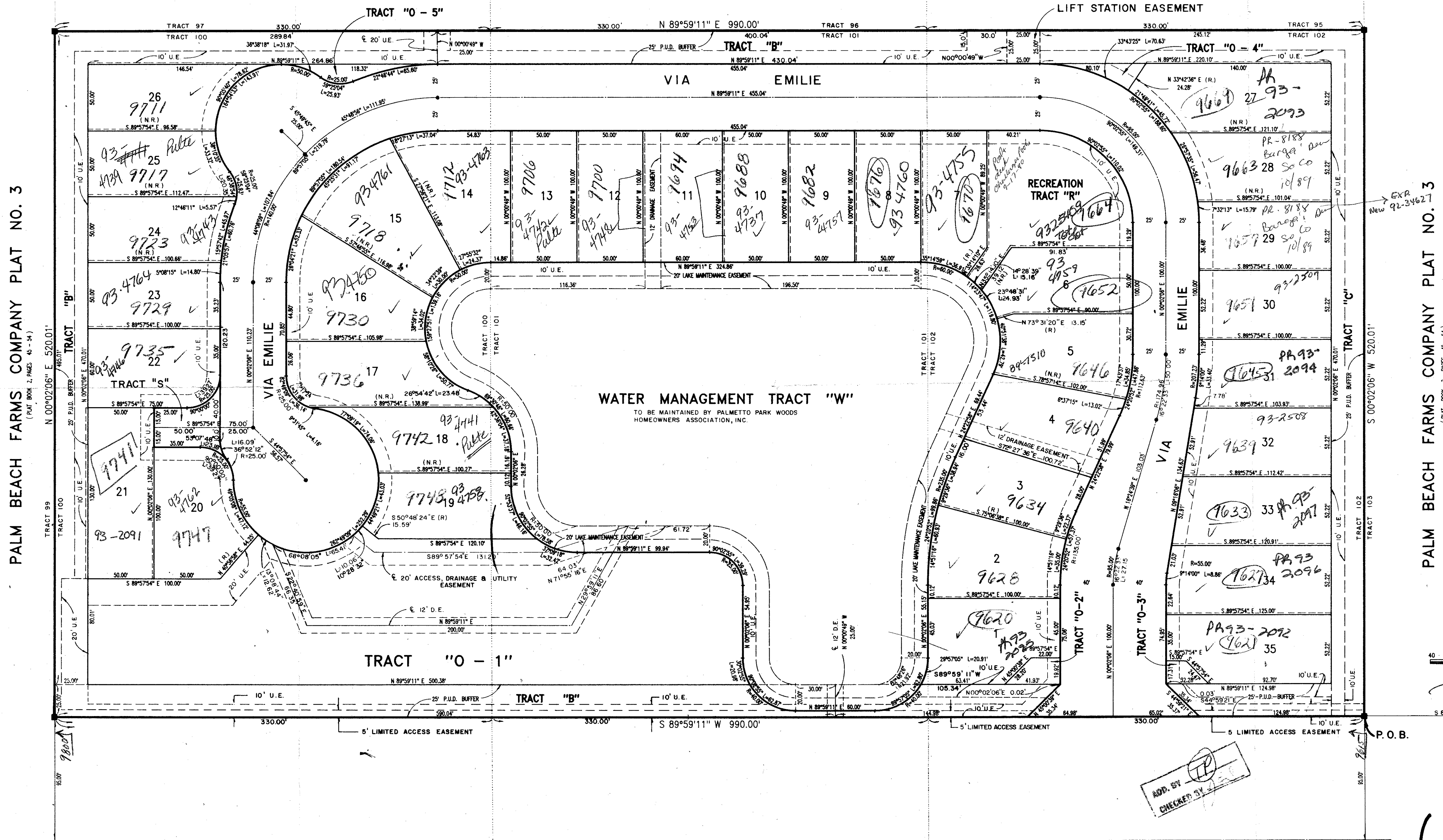
SHEET 2 OF 2

DECEMBER, 1988

PALM BEACH FARMS COMPANY PLAT NO. 3

(PLAT BOOK 2, PAGES 45-54)

STATE OF FLORIDA
COUNTY OF PALM BEACH
This Plat was filed for record at _____
M. this _____ day of _____, 19____
and duly recorded in Plat Book No. _____
on Page _____
John B. Dunkle, Clerk of the Circuit Court
By _____ D.C.



PALM BEACH FARMS COMPANY PLAT NO. 3
(PLAT BOOK 2, PAGES 45-54)

PALM BEACH FARMS COMPANY PLAT NO. 3
(PLAT BOOK 2, PAGES 45-54)

0537-001

GRAPHIC SCALE 1"=40'

PET. 87-131

P.O.C.
S.W. CORNER CRICKLEWOOD
ESTATES (PB 41, PAGES 31-33)

62/97

Palmetto Park Woods
G.B. Ac. 99 930B
54 RS87-131
53433 TAZ 7B3
A PUD
19/4/7/82

ADD. BY [Signature]
CHECKED BY [Signature]

NOTE: ALL LOTS HAVE A 1.5' ROOF
EAVE EASEMENT SHOWN THUS.

PALMETTO PARK ROAD
(PLAT BOOK 2, PAGES 45-54 & O.R.B. 4520, PAGES 28-29)

L.W.D.D. CANAL LATERAL NO. 48
(PLAT BOOK 2, PAGES 45-54)

Landmark Surveying & Mapping Inc.
1850 FOREST HILL BOULEVARD
PH. (505)433-5405 SUITE 100 W.P.B. FLORIDA

PALMETTO PARK WOODS