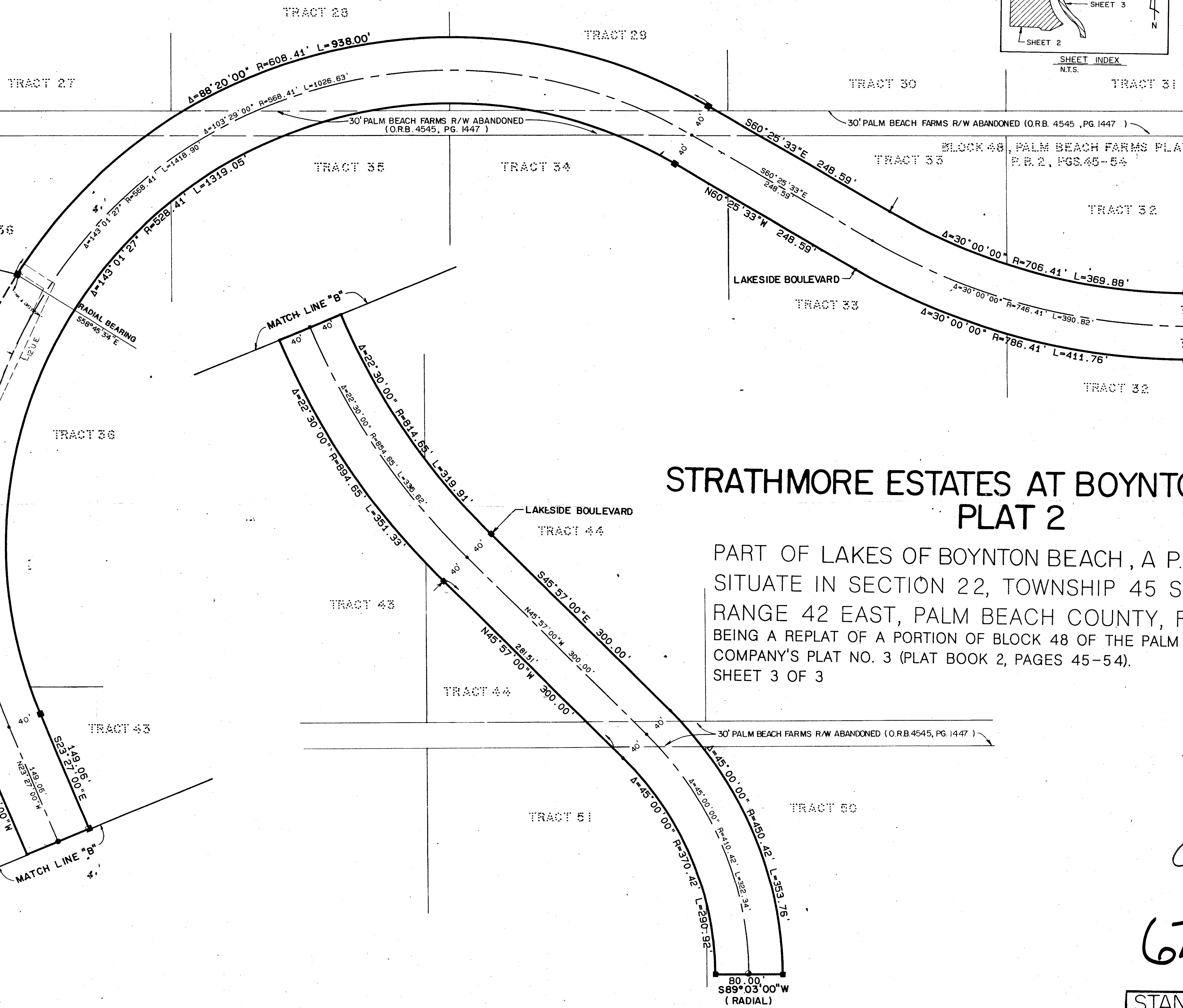
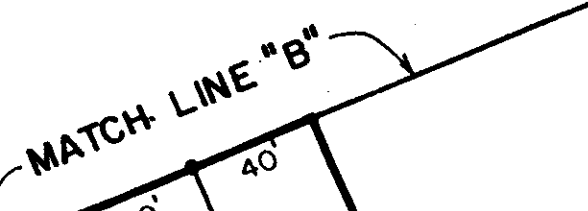
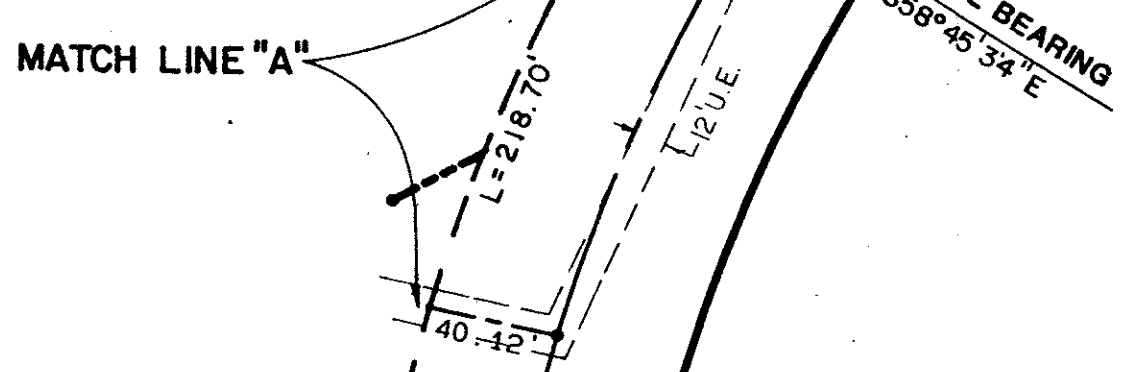
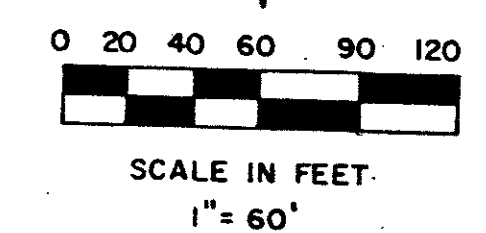
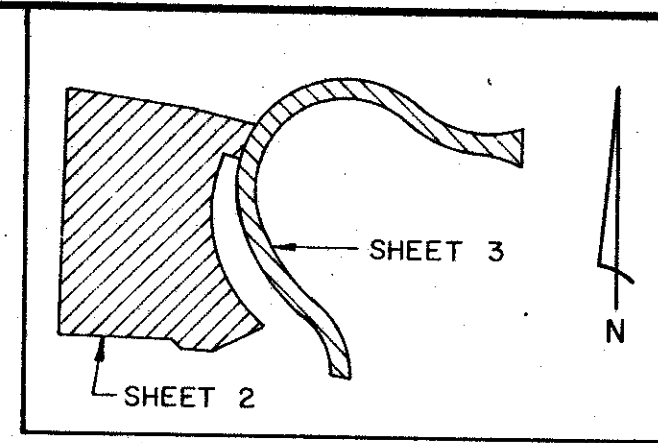


STATE OF FLORIDA
COUNTY OF PALM BEACH
THIS PLAT WAS FILED FOR
RECORD AT _____ DAY OF _____
AD, 1989 AND DULY RECORDED
IN PLAT BOOK _____ ON PAGES
AND _____
JOHN B. DUNKLE, CLERK
CIRCUIT COURT
BY: _____, D.C.
CIRCUIT COURT SEAL



STRATHMORE ESTATES AT BOYNTON BEACH PLAT 2

PART OF LAKES OF BOYNTON BEACH, A P.U.D.
SITUATE IN SECTION 22, TOWNSHIP 45 SOUTH,
RANGE 42 EAST, PALM BEACH COUNTY, FLORIDA.
BEING A REPLAT OF A PORTION OF BLOCK 48 OF THE PALM BEACH FARMS
COMPANY'S PLAT NO. 3 (PLAT BOOK 2, PAGES 45-54).
SHEET 3 OF 3

Strathmore Estates of BBA 2
62/100
35
RS 83-58
35437
1/12 443
Survey of Boynton Beach, Fla.
29/1/5/12

0391-002

62/100

STANLEY/WANTMAN, INC.
2000 LOMBARD STREET, WEST PALM BEACH, FL 33411 (407) 842-7444

DRAWN	MEH	DATE	FEB. 1984
CHECKED	RBP	SCALE	1" = 60'
DRAWING NO.	09831PL	STRATHMORE ESTATES AT BOYNTON BEACH PLAT 2	