

# "WINDCHIME LAKES"

A REPLAT OF TRACT 'D' OF TARTAN LAKES PLAT NO. 3-P.U.D. (P.B. 51, Pp.170-174, PALM BEACH COUNTY RECORDS) LYING IN SECTION 15, TOWNSHIP 45 SOUTH, RANGE 42 EAST PALM BEACH COUNTY, FLORIDA

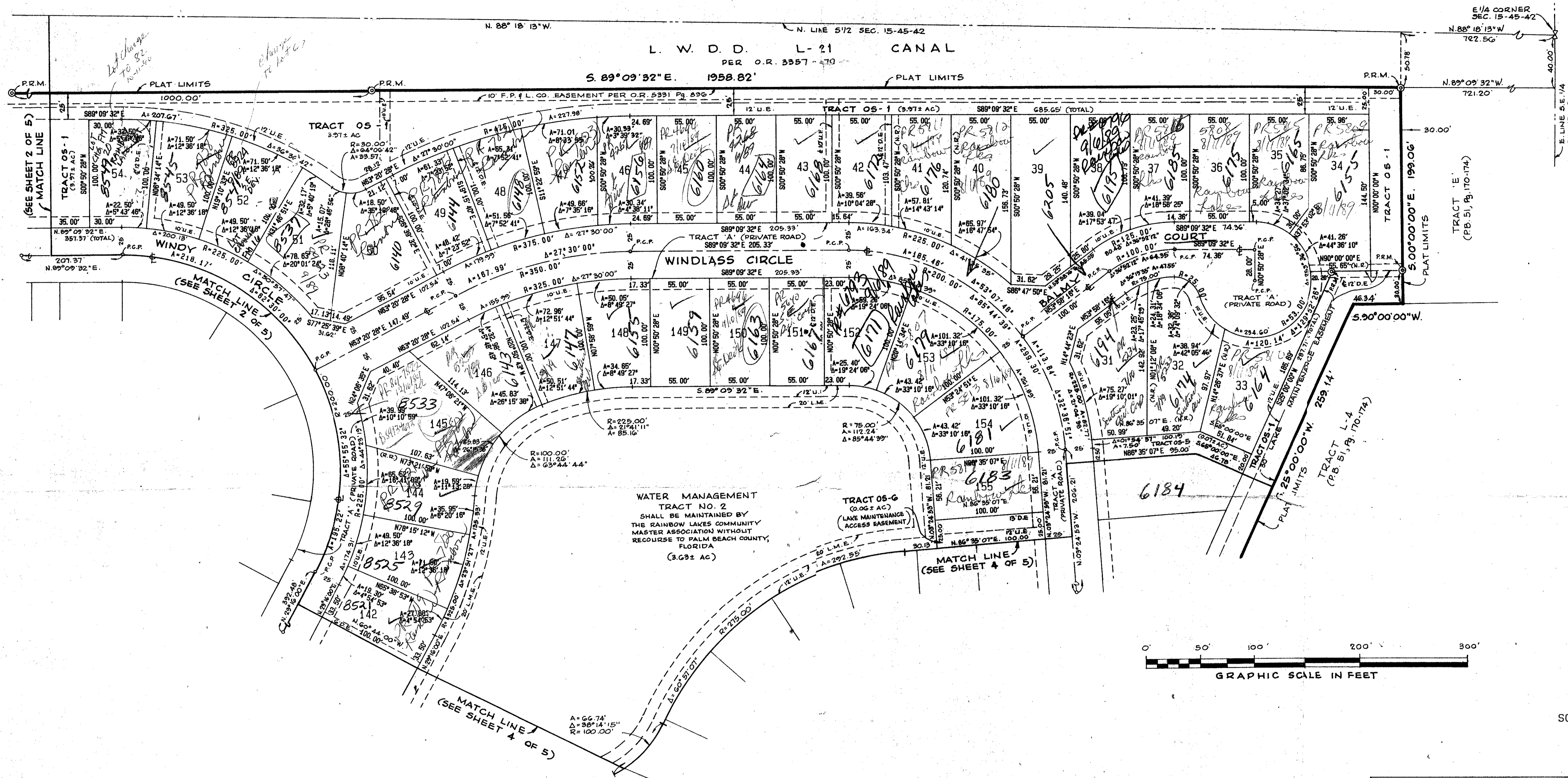
SHEET 3 OF 5

NOVEMBER, 1988

**110**

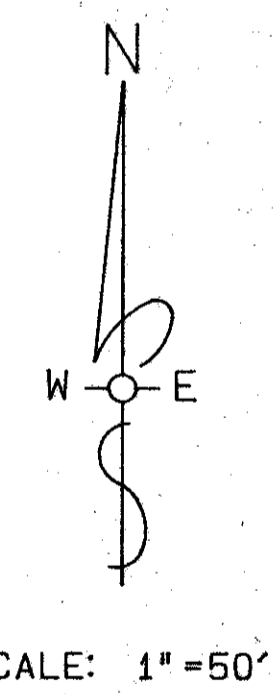
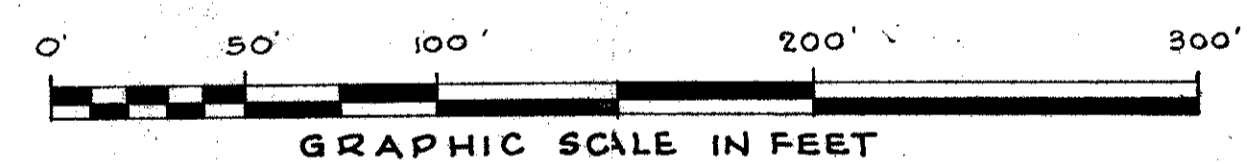
STATE OF FLORIDA } S.S.  
COUNTY OF PALM BEACH }  
THIS PLAT WAS FILED FOR RECORD  
AT \_\_\_\_\_ DAY OF \_\_\_\_\_  
A. D. \_\_\_\_\_ AND DULY  
RECORDED IN PLAT BOOK \_\_\_\_\_  
ON PAGES \_\_\_\_\_ AND \_\_\_\_\_

JOHN B. DUNKLE  
CLERK, CIRCUIT COURT  
BY: \_\_\_\_\_ D. C.



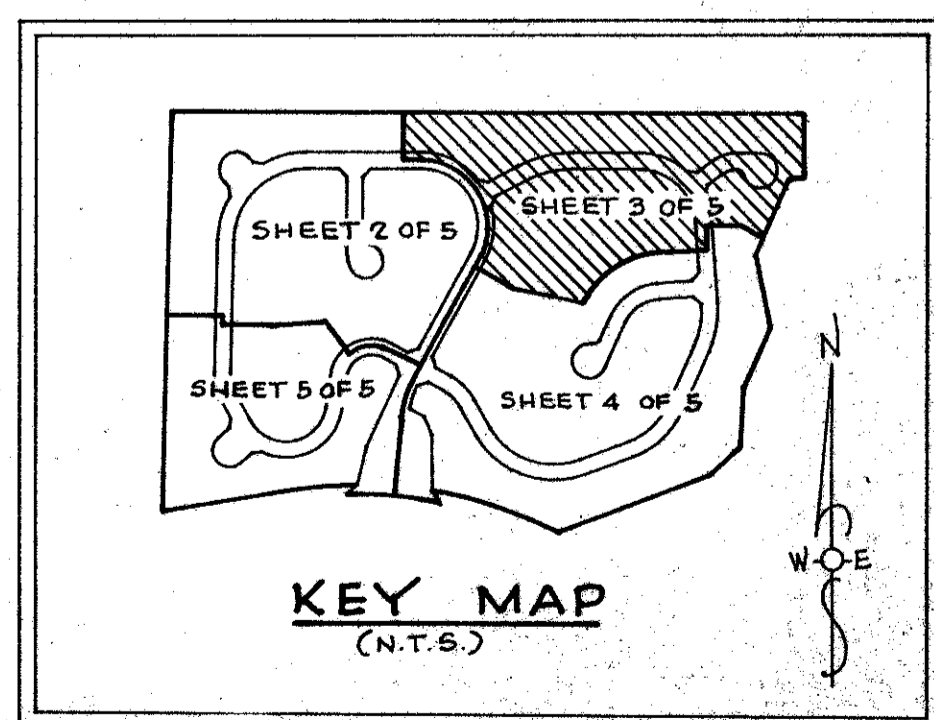
WATER MANAGEMENT TRACT NO. 2 SHALL BE MAINTAINED BY THE RAINBOW LAKES COMMUNITY MASTER ASSOCIATION WITHOUT RECOURSE TO PALM BEACH COUNTY, FLORIDA (3.63 ± AC)

TRACT 05-6 (0.06 ± AC) (LAKE MAINTENANCE ACCESS EASEMENT)



**SITE PLAN DATA**

Total Area of Plat	=	2,225,609 square feet (51.09 acres)
Total Number of Lots	=	190
Density	=	3.72 units per acre
Area of Water Management Tracts	=	246,345 square feet (5.655 acres)
Area of Open Space	=	224,811 square feet (5.161 acres)
Area of Recreation Tracts	=	85,216 square feet (1.956 acres)



0316-006  
Plat 19-179

Prepared By:  
R. P. LEGG AND ASSOCIATES, INC. - LAND SURVEYORS  
8120 Pasadena Blvd. Pembroke Pines, Florida  
33024

APP. BY [Signature]  
CHECKED BY [Signature]

SUBDIVISION: Windchime Lakes  
BOOK: 62  
FLOOD ZONE: B  
ZONING: RA-179 EIS  
ROAD: 34'  
SE  
PROP. NAME: Tartan Lakes  
M-441

"WINDCHIME LAKES" 62/110