

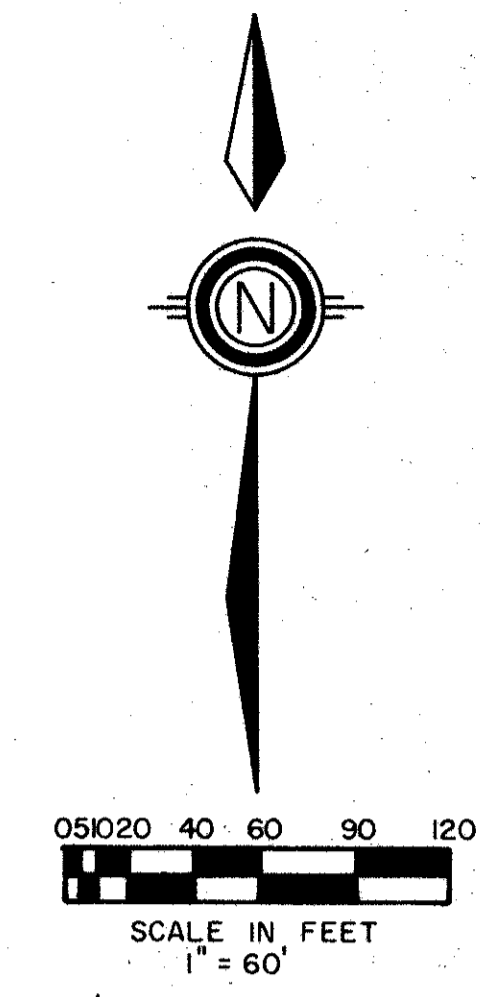
THE HOLLOWES

PART OF THE POLO CLUB P.U.D.
BEING A REPLAT OF A PORTION OF TRACT I OF "THE POLO CLUB PLAT III" (P.B. 59 PGS. 110 - 112)
SITUATE IN SECTIONS 26 AND 27, TOWNSHIP 46 SOUTH, RANGE 42 EAST
PALM BEACH COUNTY, FLORIDA.

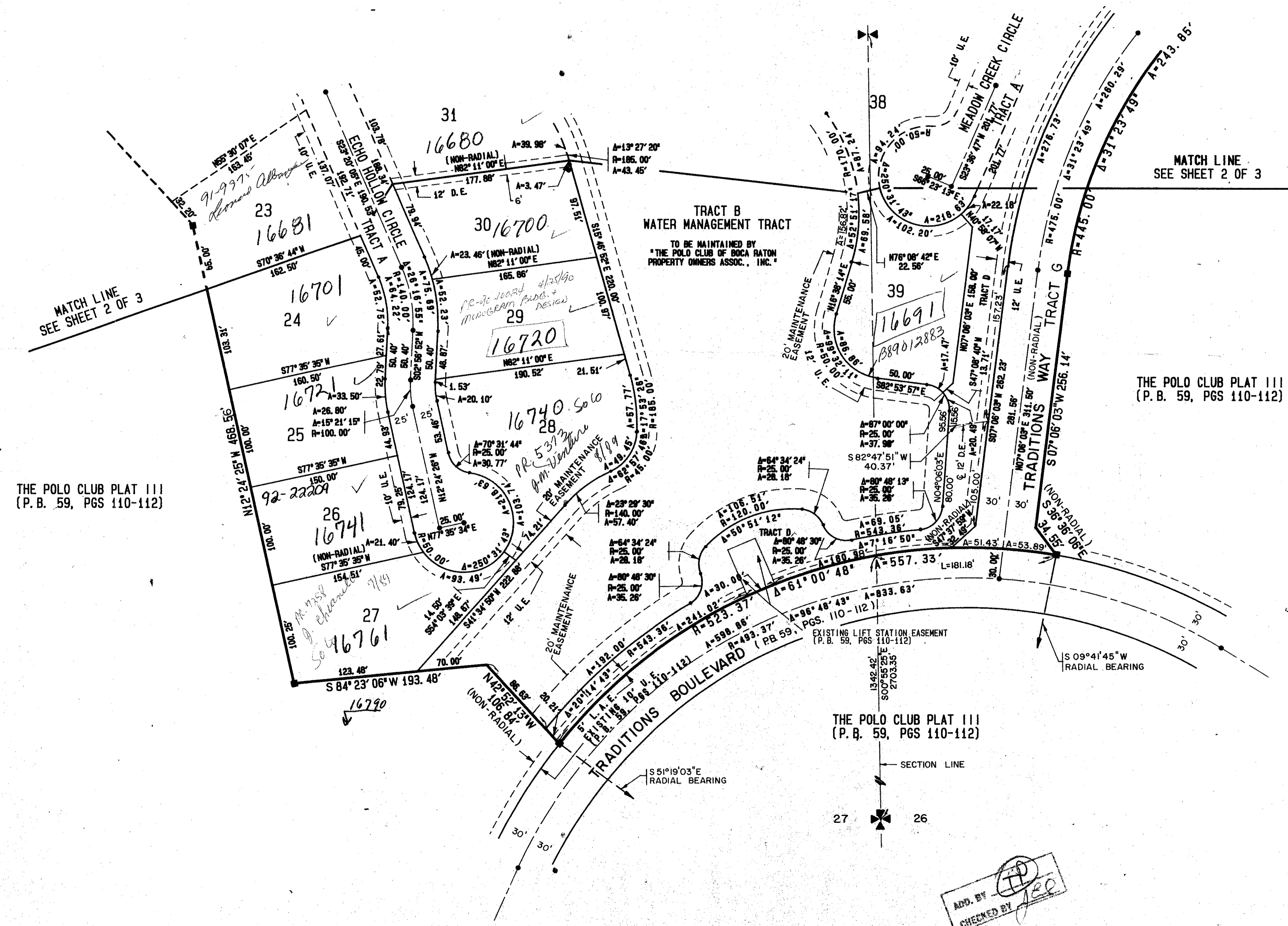
1989

SHEET 3 OF 3

STATE OF FLORIDA
COUNTY OF PALM BEACH
THIS PLAT WAS FILED FOR
RECORD
THIS _____ DAY OF _____
AD, 1988 AND DULY RECORDED
IN PLAT BOOK _____ ON PAGES
_____ AND _____
JOHN B. DUNKLE, CLERK
BY: _____, D.C.



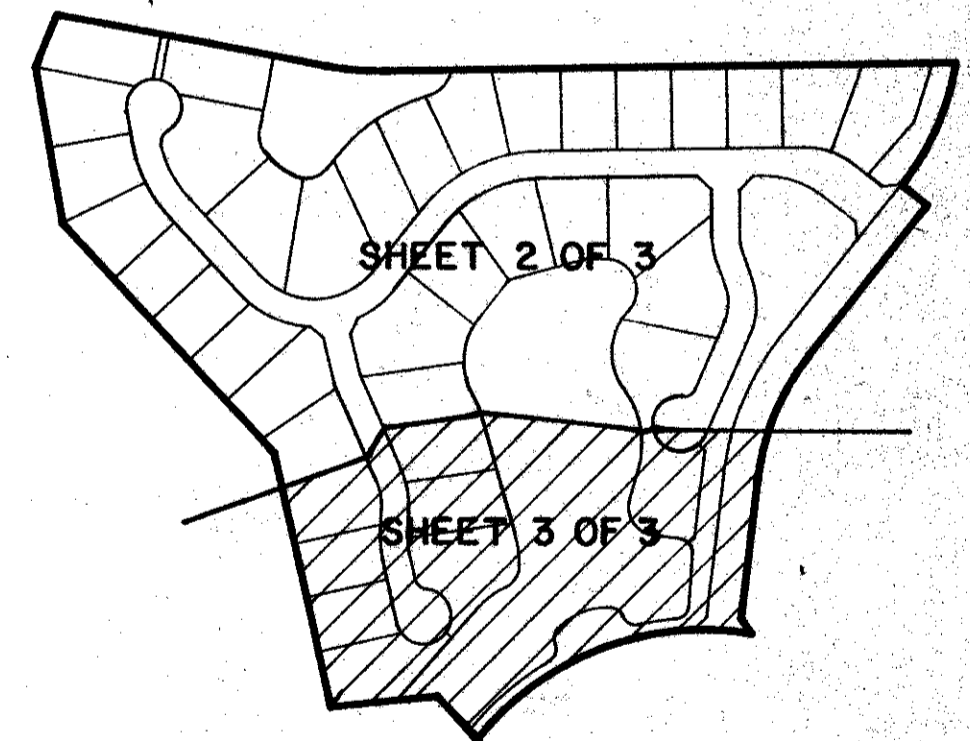
CIRCUIT COURT SEAL



THE POLO CLUB PLAT III
(P.B. 59, PGS 110-112)

THE POLO CLUB PLAT III
(P.B. 59, PGS 110-112)

THE POLO CLUB PLAT III
(P.B. 59, PGS 110-112)



SHEET INDEX MAP
N.T.S.

Allocation #0001
Pet. 84-91
0436-016

62/117

ADD BY [Signature]
CHECKED BY [Signature]

SUBDIVISION: The Hollowes
BOOK: 62
PAGE: 0905-0910
FLOOD ZONE: B
QUAD: 137
SE: 37
PUD NAME: Polo Club P.U.D.
ZONING: R-4
LIP CODE: 58445
DATE: 10/27/88

STANLEY/WANTMAN, INC.
2000 LOMBARD STREET, WEST PALM BEACH, FL 33407 (407) 842-7444

DRAWN	M.E.H.	DATE	OCT 1988
CHECKED	R.B.P.	SCALE	1"=60'
DRAWING NO.	09745PL		

THE HOLLOWES
PART OF POLO CLUB, P.U.D.