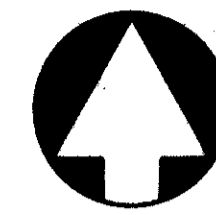


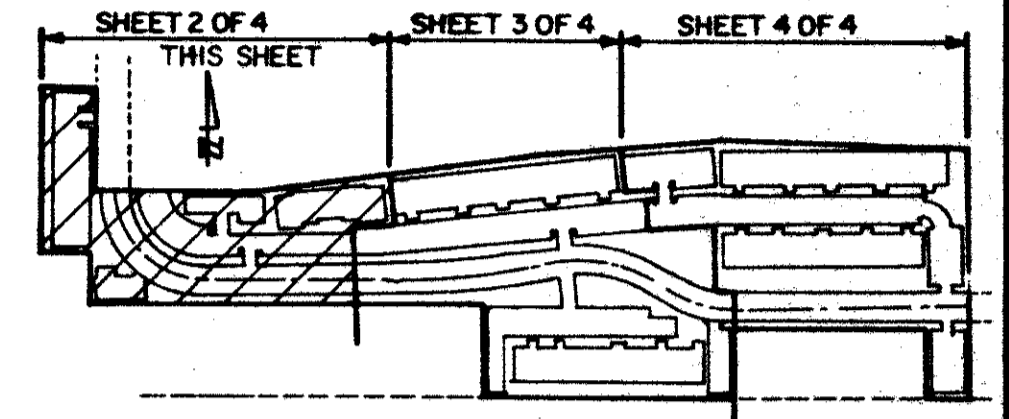
# LUCERNE POINTE

PHASE III-C-3  
A PORTION OF LUCERNE LAKES, A P.U.D.

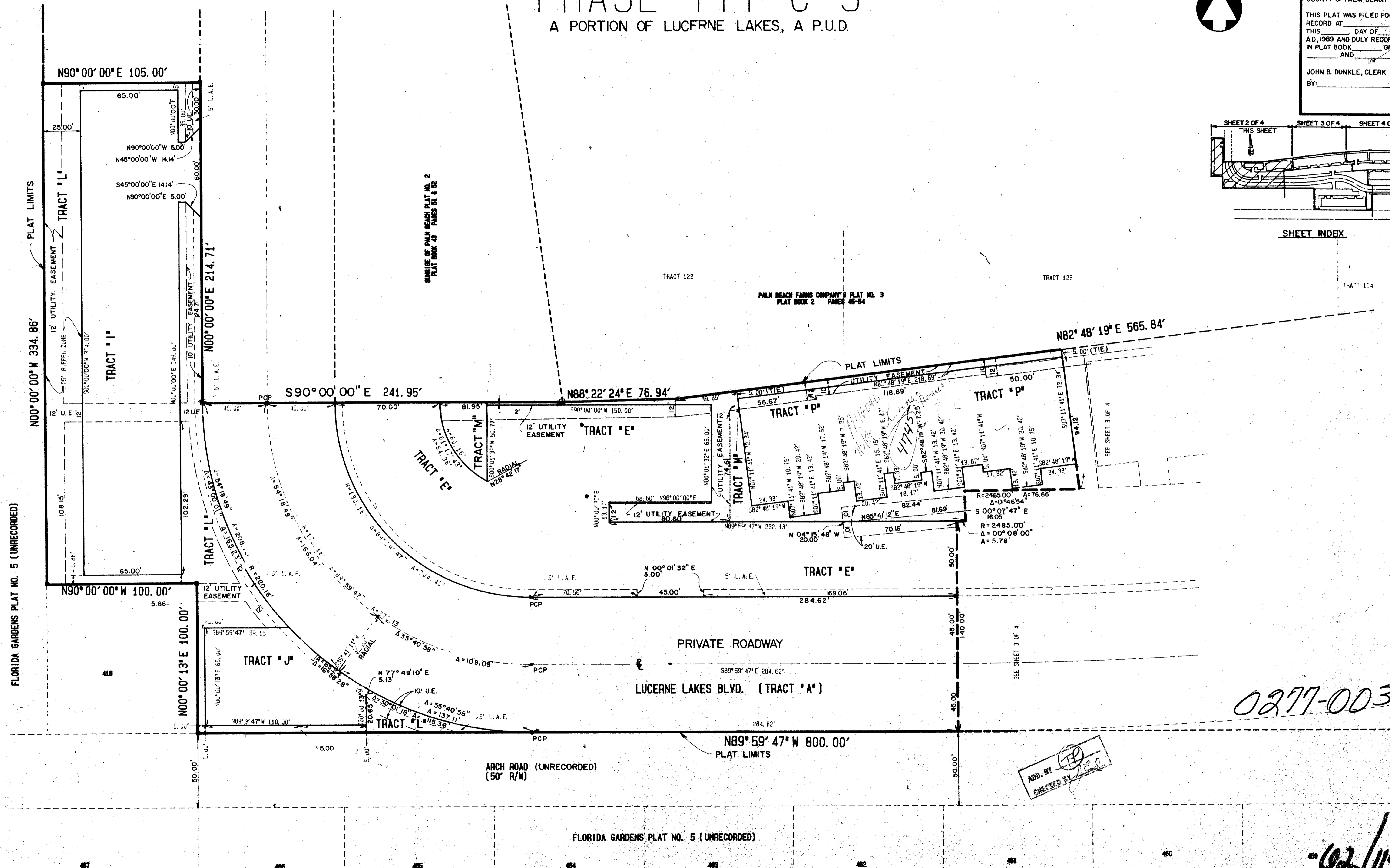
0 10 20 30 45 60  
SCALE IN FEET  
1" = 30'



STATE OF FLORIDA  
COUNTY OF PALM BEACH  
THIS PLAN WAS FILED FOR  
RECORD AT \_\_\_\_\_  
THIS \_\_\_\_\_ DAY OF \_\_\_\_\_  
A.D. 1989 AND DULY RECORDED  
IN PLAT BOOK \_\_\_\_\_ ON PAGES  
\_\_\_\_\_ AND \_\_\_\_\_  
JOHN B. DUNKLE, CLERK  
BY: \_\_\_\_\_ D.C.



SHEET INDEX



0277-003

ADD. BY [Signature]  
CHECKED BY [Signature]

02/119

CARLTON/ROBAYNA INC.  
ENGINEERS - PLANNERS - SURVEYORS  
2700 W. METTAM ROAD - SUITE 100  
WEST PALM BEACH, FLORIDA 33409 - TELEPHONE (407) 863-8800

LUCERNE POINTE SHEET 2 OF 4

SUBDIVISION: Lucerne Pointe 3  
BOOK: 68  
PAGE: 119  
FLOOD MAP # 1704  
ZONING: EM  
DATE: 11/11/88  
ZIP CODE: 33467  
RD. NAME: Lucerne Lakes Blvd.

346  
TAC

28-331112

FLORIDA GARDENS PLAT NO. 5 (UNRECORDED)

PLAT LIMITS

PLAT LIMITS

PLAT LIMITS

PRIVATE ROADWAY

LUCERNE LAKES BLVD. (TRACT 'A')

ARCH ROAD (UNRECORDED)  
(50' R/W)

FLORIDA GARDENS PLAT NO. 5 (UNRECORDED)

N90°00'00"E 105.00'

N00°00'00"W 334.86'

N90°00'00"W 100.00'

N00°00'13"E 100.00'

S90°00'00"E 241.95'

N88°22'24"E 76.94'

N00°01'32"E 5.00'

N89°59'47"W 800.00'

N82°48'19"E 565.84'

65.00'  
25.00'  
N90°00'00"W 5.00'  
N45°00'00"W 14.14'  
S45°00'00"E 14.14'  
N90°00'00"E 5.00'

5.86'

389°59'47" 39.15  
N00°00'13"E 65.00'  
N89°3'47"W 110.00'

N77°49'10"E 6.13'

S89°59'47"E 284.62'

284.62'

284.62'

50.00'

45.00'

45.00'

50.00'

140.00'

45.00'

45.00'

50.00'

140.00'

45.00'

45.00'

50.00'

140.00'

45.00'

45.00'

50.00'

140.00'

45.00'

45.00'

50.00'

140.00'

45.00'

45.00'

50.00'

140.00'

45.00'

45.00'

50.00'

140.00'

45.00'

45.00'

50.00'

140.00'

45.00'

45.00'

50.00'

140.00'

45.00'

45.00'

50.00'

140.00'

45.00'

45.00'

50.00'

140.00'

45.00'

45.00'

50.00'

140.00'

45.00'

45.00'

50.00'

140.00'

45.00'

45.00'

50.00'

140.00'

45.00'

45.00'

50.00'

140.00'

45.00'

45.00'

50.00'

140.00'

45.00'

45.00'

50.00'

140.00'

45.00'

45.00'

50.00'

140.00'

45.00'

45.00'

50.00'

140.00'

45.00'

45.00'

50.00'

140.00'

45.00'

45.00'

50.00'

140.00'

45.00'

45.00'

50.00'

140.00'

45.00'

45.00'

50.00'

140.00'

45.00'

45.00'

50.00'

140.00'

45.00'

45.00'

50.00'

140.00'

45.00'

45.00'

50.00'

140.00'

45.00'

45.00'

50.00'

140.00'

45.00'

45.00'

50.00'

140.00'

45.00'

45.00'

50.00'

140.00'

45.00'

45.00'

50.00'

140.00'

45.00'

45.00'

50.00'

140.00'

45.00'

45.00'

50.00'

140.00'

45.00'

45.00'

50.00'

140.00'

45.00'

45.00'

50.00'

140.00'

45.00'

45.00'

50.00'

140.00'

45.00'

45.00'

50.00'

140.00'

45.00'

45.00'

50.00'

140.00'

45.00'

45.00'

50.00'

140.00'

45.00'

45.00'

50.00'

140.00'

45.00'

45.00'

50.00'

140.00'

45.00'

45.00'

50.00'

140.00'

45.00'

45.00'

50.00'

140.00'

45.00'

45.00'

50.00'

140.00'

45.00'

45.00'

50.00'

140.00'

45.00'

45.00'

50.00'

140.00'

45.00'

45.00'

50.00'

140.00'

45.00'

45.00'

50.00'

140.00'

45.00'

45.00'

50.00'

140.00'

45.00'

45.00'

50.00'

140.00'

45.00'

45.00'

50.00'

140.00'

45.00'

45.00'

50.00'

140.00'

45.00'

45.00'

50.00'

140.00'

45.00'

45.00'

50.00'

140.00'

45.00'

45.00'

50.00'

140.00'

45.00'

45.00'

50.00'

140.00'

45.00'

45.00'

50.00'

140.00'

45.00'