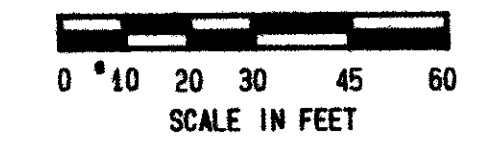


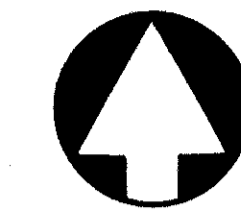
LUCERNE POINTE

PHASE III-C-3

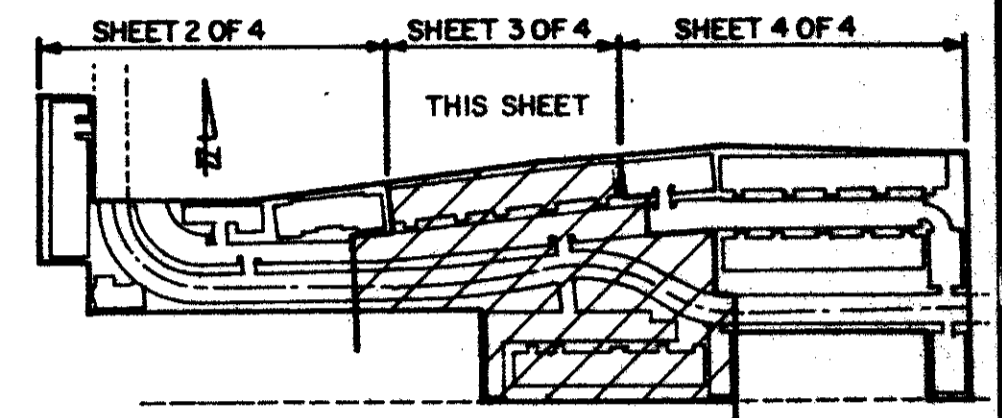
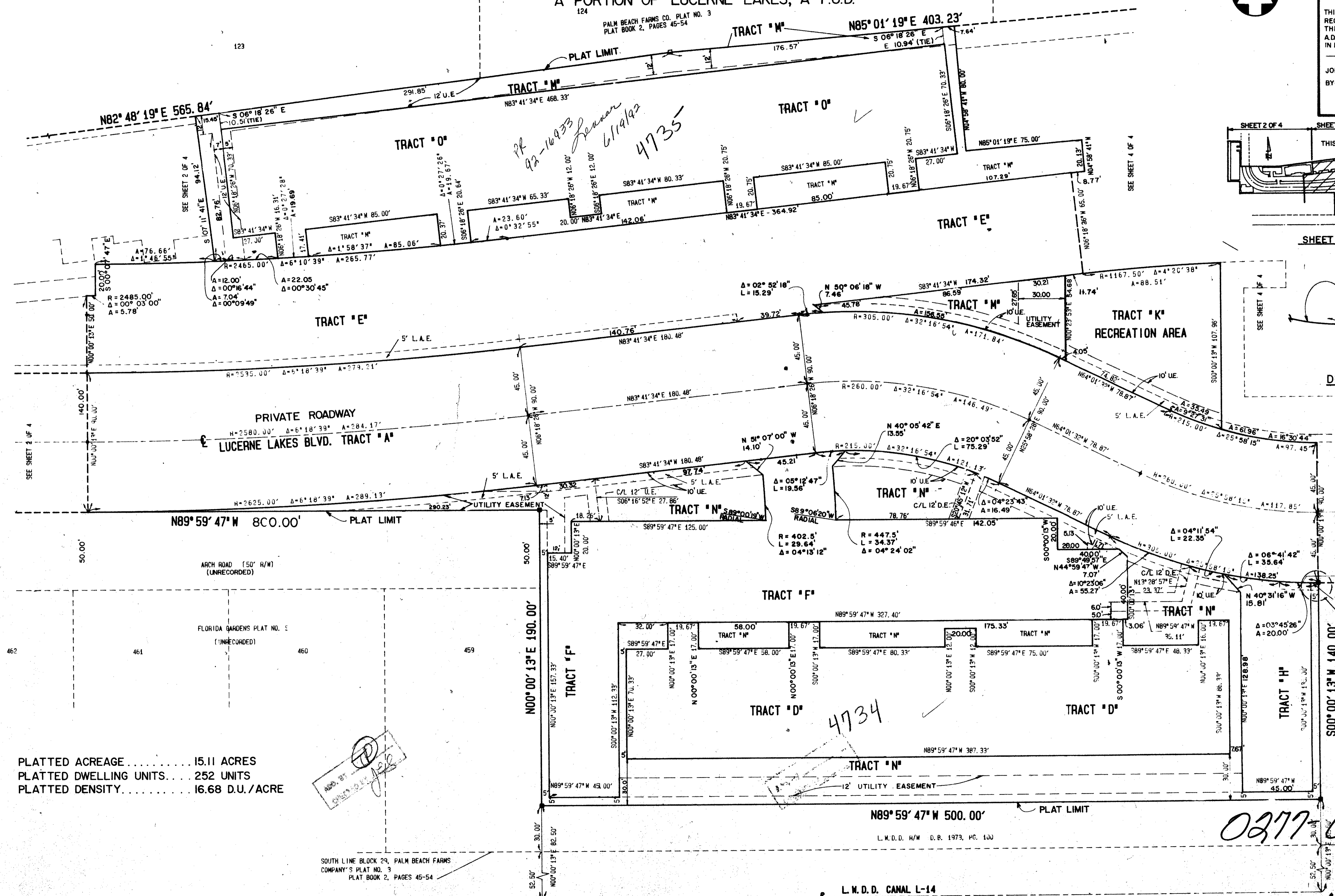
A PORTION OF LUCERNE LAKES, A P.U.D.



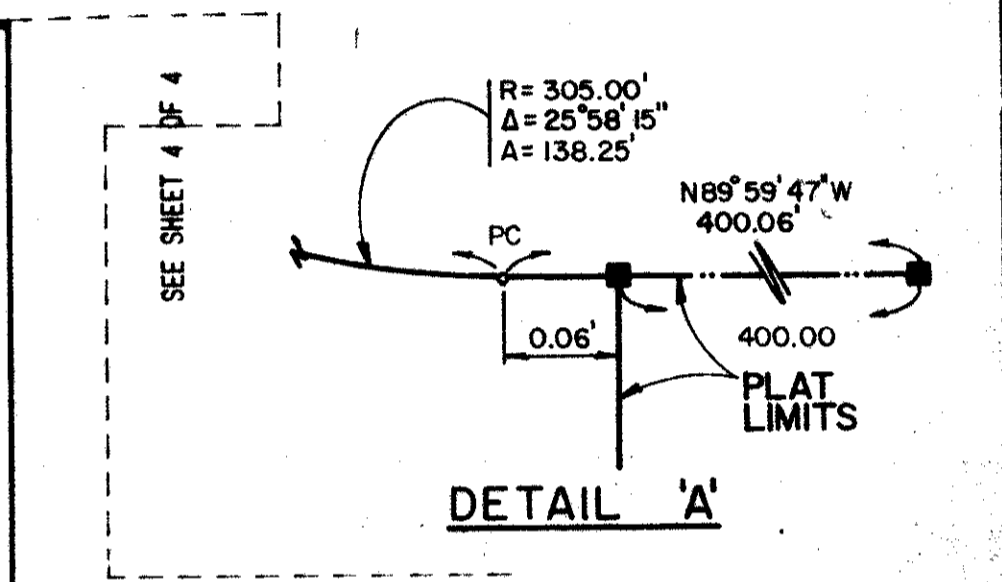
120



STATE OF FLORIDA
 COUNTY OF PALM BEACH
 THIS PLAT WAS FILED FOR
 RECORD AT _____
 THIS _____ DAY OF _____
 A.D. 1989 AND DULY RECORDED
 IN PLAT BOOK _____ ON PAGES
 _____ AND _____
 JOHN B. DUNKLE, CLERK
 BY: _____ D.C.



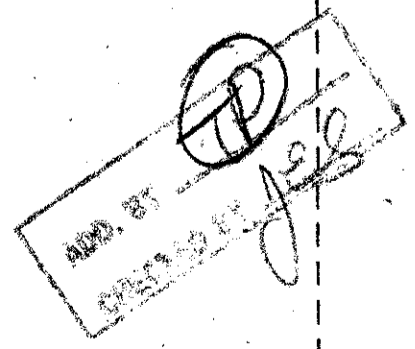
SHEET INDEX



DETAIL 'A'

SUBDIVISION * Lucerne Pointe 3
 BOOK 62 PAGE 120
 FLOOD ZONE B FLOOD MAP 170A
 Q.U.D. # 48 ZONING R.M.
 ZIP CODE 33467
 P.U.D. NAME Lucerne Lakes P.U.D.

PLATTED ACREAGE 15.11 ACRES
 PLATTED DWELLING UNITS... 252 UNITS
 PLATTED DENSITY..... 16.68 D.U./ACRE



SOUTH LINE BLOCK 29, PALM BEACH FARMS
 COMPANY'S PLAT NO. 3
 PLAT BOOK 2, PAGES 45-54

L.N.D.D. CANAL L-14

CARLTON/ROBAYNA INC.
 ENGINEERS - PLANNERS - SURVEYORS
 100 N. MILITARY TRAIL - SUITE 100
 PALM BEACH, FLORIDA 33408 - TELEPHONE (407) 853-0000

LUCERNE POINTE OF 4 02/120

0277-003