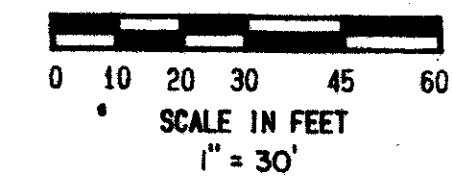


LUCERNE POINTE

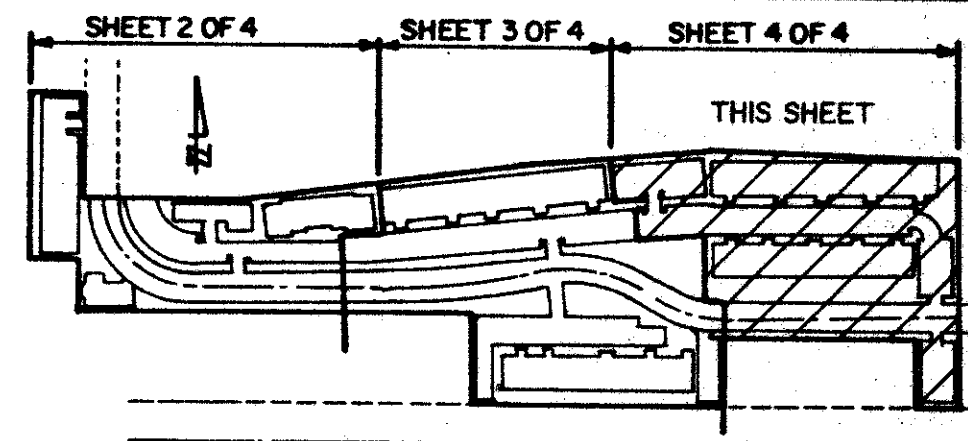
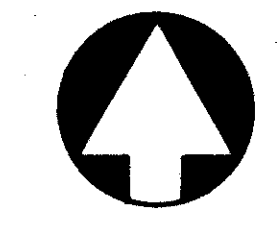
PHASE III-C-3



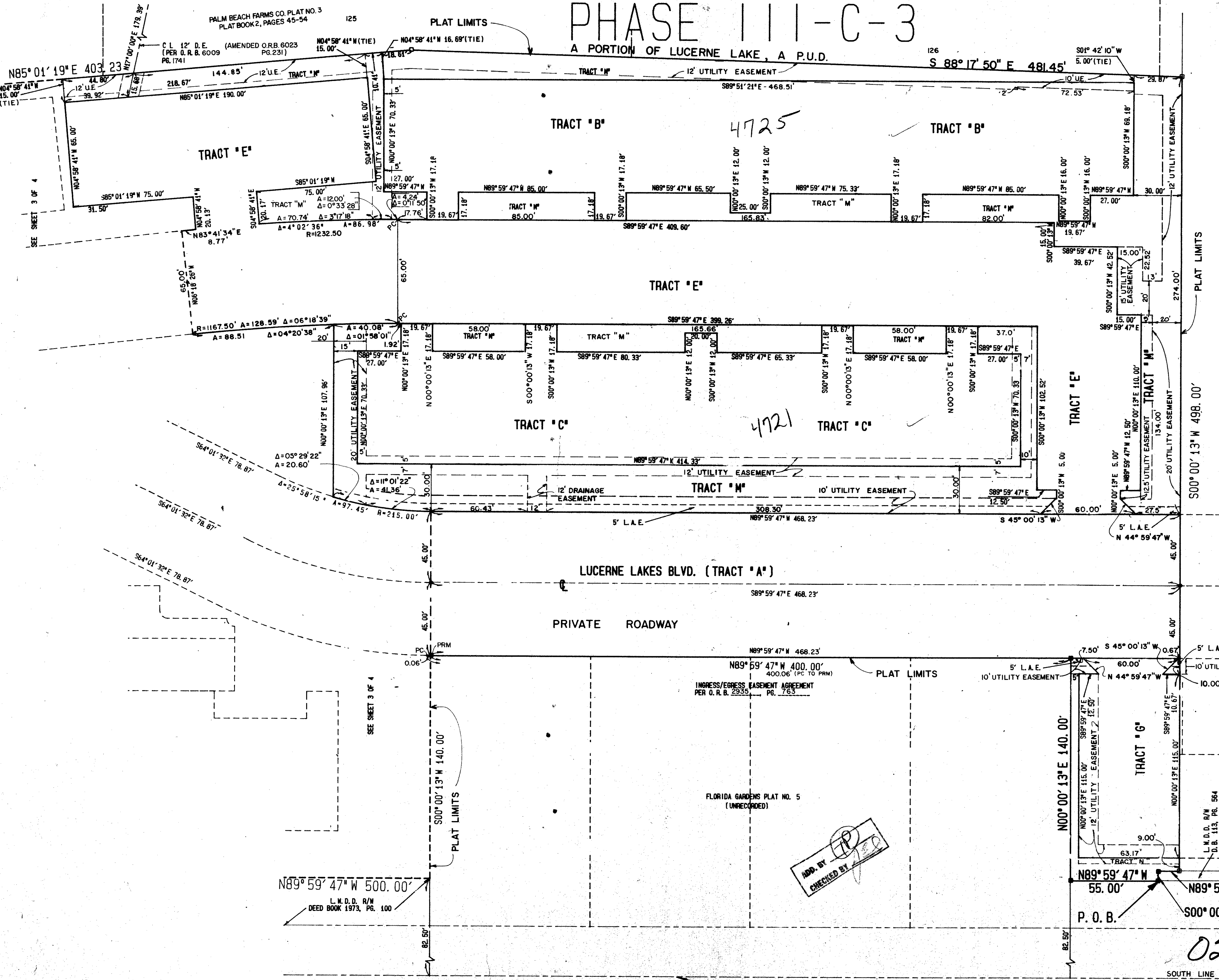
121

STATE OF FLORIDA
COUNTY OF PALM BEACH

THIS PLAT WAS FILED FOR RECORD AT THIS DAY OF A.D. 1989 AND DULY RECORDED IN PLAT BOOK ON PAGES AND BY: D.C.



SHEET INDEX



LUCERNE LAKES GOLF COLONY II
P.B. 52, PGS. 4 & 5

INGRESS/EGRESS EASEMENT AGREEMENT
PER O.R.B. 2935, PG. 763

FLORIDA GARDENS PLAT NO. 5
(UNRECORDED)

ADD BY
CHECKED BY

0277-003

P.O.C.
S.E. CORNER LOT 128
BLOCK 29, PALM BEACH FARMS
CO. PLAT NO. 3

SUBDIVISION: Lucerne Pointe 3
BOOK: 62
PAGE: 118
FLOOD MAP: #170A
ZONING: RM
QUAD: 48
ZIP CODE: 33447
PUD NAME: Lucerne Lakes P&E

LUCERNE POINTE OF 4 6/2/12

CARLTON/ROBAYNA INC.
ENGINEERS - PLANNERS - SURVEYORS
2700 N. MILITARY TRAIL, SUITE 100
WEST PALM BEACH, FLORIDA 33409 • TELEPHONE: (407) 833-8800