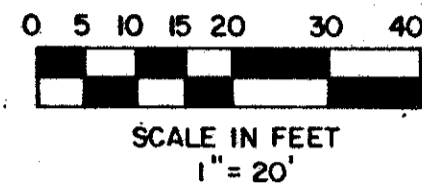
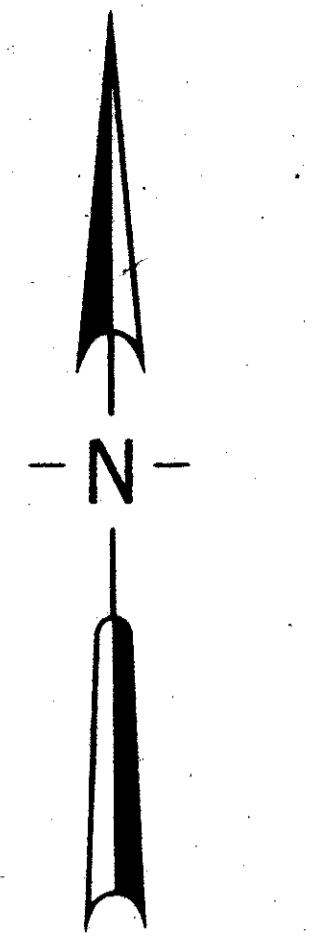


# WESTCHESTER TOWNHOUSES REPLAT

BEING A REPLAT OF A PORTION OF WESTCHESTER TOWNHOUSES (P.B. 42, PGS. 187, 188) SITUATE IN SECTION 24, TOWNSHIP 43 SOUTH, RANGE 42 EAST PALM BEACH COUNTY, FLORIDA.

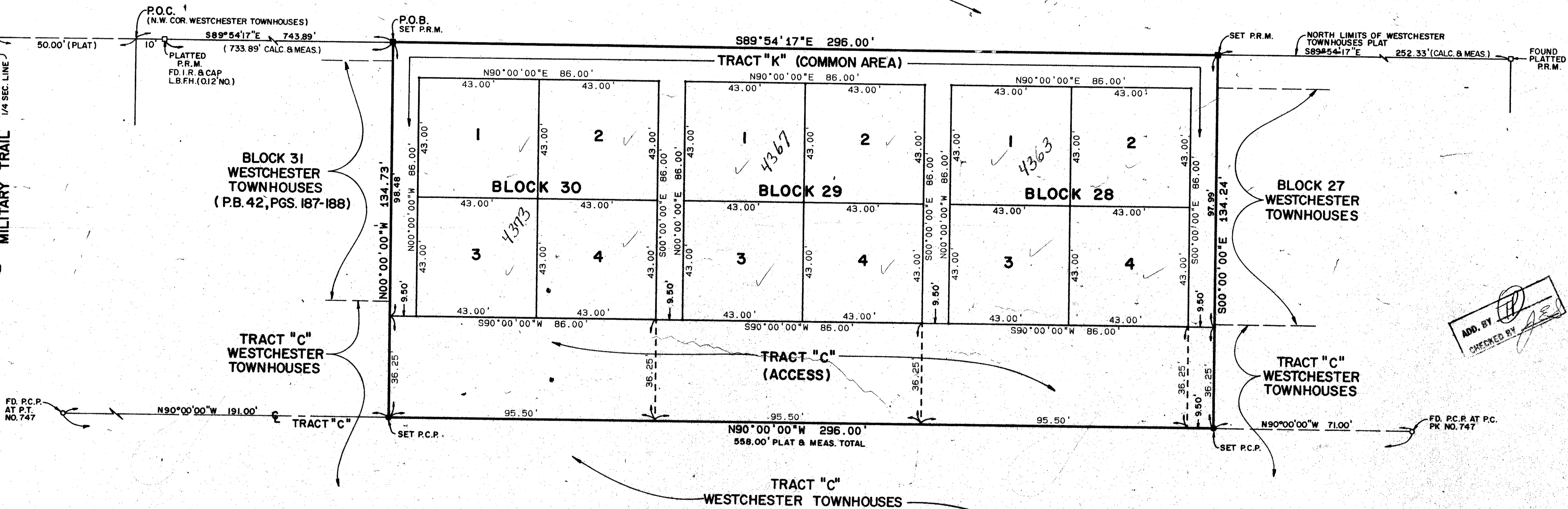
APRIL, 1989

SHEET 2 OF 2



NORTH 1/4 CORNER SEC. 24, TWP. 43S., RGE. 42E.

350.00' (PLAT) 100°03'18"W MILITARY TRAIL 1/4 SEC. LINE



ADD. BY [Signature] CHECKED BY [Signature]

SUBDIVISION: Westchester Townhouses Replat  
 BOOK: 62  
 FLOOD ZONE: [Symbol]  
 SUB.D.: [Symbol]  
 PUD NAME: [Symbol]  
 PAGE: 144  
 FLOOD MAP: 1532A  
 ZONING: RM  
 ZIP CODE: 33407  
 2/13/92

0336-001  
62/124

**PETSCHÉ & ASSOCIATES, INC.**  
 Professional Engineers • Land Surveyors • Development Consultants  
 1760 North Congress Avenue, Suite 203, West Palm Beach, FL 33409  
 (407) 840-3800

**WESTCHESTER TOWNHOUSES REPLAT**

SEC. 24, TWP. 43S., RGE. 42E  
 PALM BEACH COUNTY, FLORIDA

DRAWN M.E.H.	DATE 12/88	SCALE 1"=20'	JOB NO. 87-087	SHEET 2	OF 2
DESIGNED	CHECKED R.A.H.				