

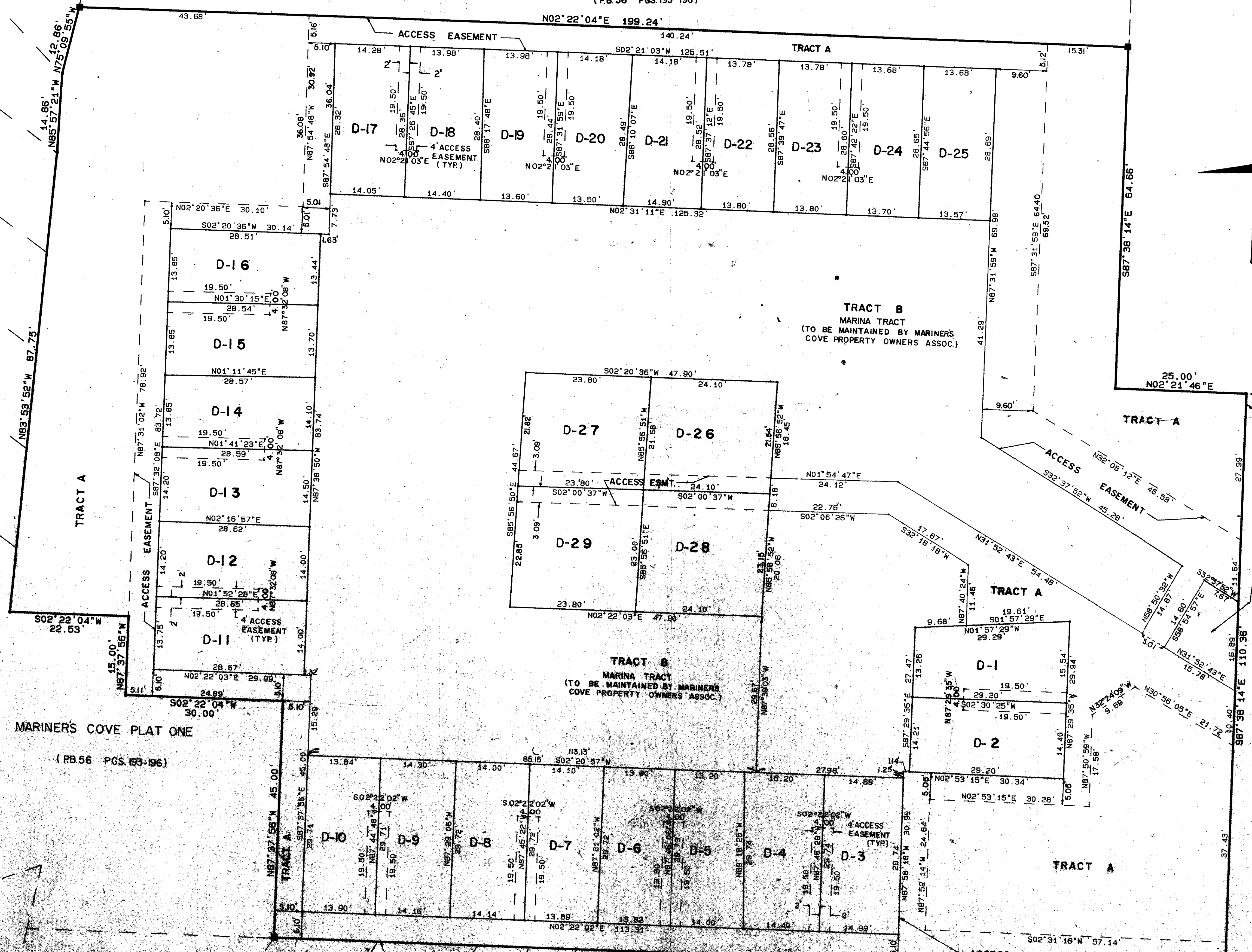
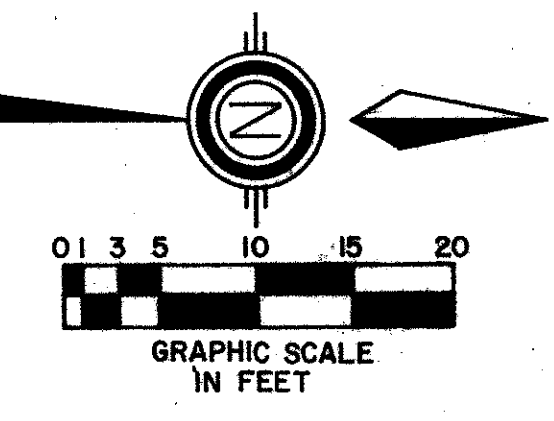
# MARINER'S COVE PLAT THREE

BEING PART OF MARINER'S COVE, A P.U.D.  
A REPLAT OF TRACT M OF "MARINER'S COVE PLAT ONE"  
SITUATE IN SECTION 29, TOWNSHIP 41 SOUTH, RANGE 43 EAST  
PALM BEACH COUNTY, FLORIDA.

MAY, 1989 MARINER'S COVE PLAT ONE SHEET 2 OF 2  
(PB. 56 PGS. 193-196)

STATE OF FLORIDA  
COUNTY OF PALM BEACH  
THIS PLAT WAS FILED FOR  
RECORD \_\_\_\_\_ DAY OF \_\_\_\_\_  
AD, 1989 AND DULY RECORDED  
IN PLAT BOOK \_\_\_\_\_ ON PAGES  
\_\_\_\_\_ AND \_\_\_\_\_  
JOHN B. DUNKLE, CLERK  
BY: \_\_\_\_\_, D.C.

CIRCUIT COURT SEAL



SUBDIVISION: Mariner's Cove  
BOOK: 52 PAGE: 177  
FLOOD ZONE: AS FLOOD MAP # 11-7-E  
ZONING: RS 81-165  
MAP # 11-7-E  
ZIP CODE: 33410  
PLAT NAME: MARINER'S COVE PLAT III  
722-14

STANLEY/WANTMAN, INC  
2000 LOMBARD STREET, WEST PALM BEACH, FL 33407 (407) 642-7444  
DRAWN: M.E.H. DATE: MAY 4, 1989  
CHECKED: H.B.P. SCALE: 1"=40'  
DRAWING NO.: 10085PL  
MARINER'S COVE PLAT THREE  
REPLAT OF MARINER'S COVE  
PLAT ONE, TRACT M

MARINER'S COVE PLAT ONE  
(PB. 56, PGS. 193 - 196)

Ret. 81-165

602/177

UNPLATTED