

STONEGATE OF WELLINGTON - P. U. D.

BEING A PART OF AN ABANDONED PORTION OF GREENVIEW SHORES NO. 2 OF WELLINGTON P. U. D. (ABANDONED BY PALM BEACH COUNTY BOARD OF COUNTY COMMISSIONERS RESOLUTION NO. R-80-774, RECORDED IN OFFICIAL RECORD BOOK 3323, PAGES 0811 THROUGH 0813 OF THE PUBLIC RECORDS OF PALM BEACH COUNTY, FLORIDA) AS RECORDED IN PLAT BOOK 31, PAGES 120 THROUGH 136 OF THE PUBLIC RECORDS OF PALM BEACH COUNTY, FLORIDA

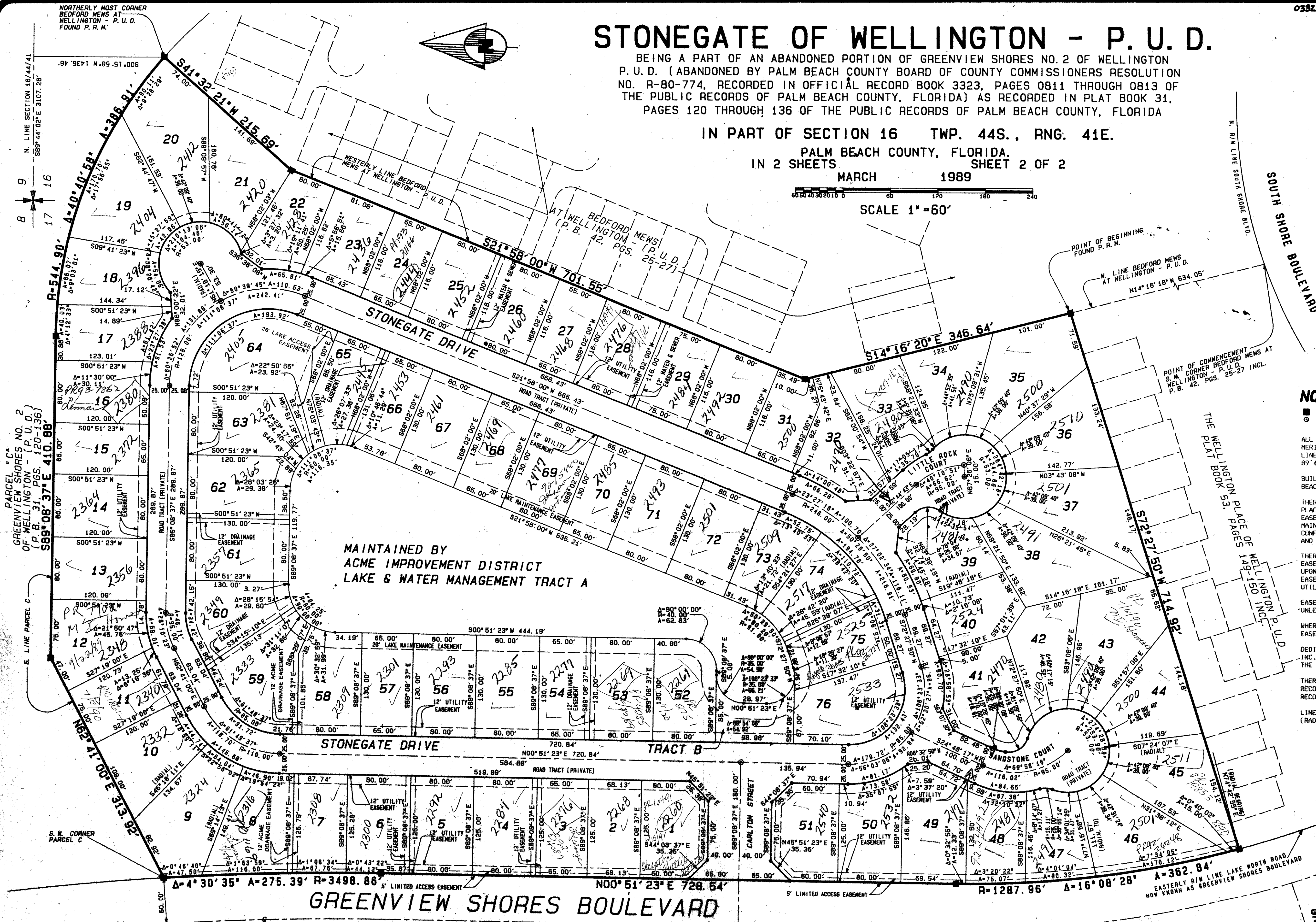
IN PART OF SECTION 16 TWP. 44S., RNG. 41E.

PALM BEACH COUNTY, FLORIDA.

IN 2 SHEETS SHEET 2 OF 2

MARCH 1989

SCALE 1" = 60'



NOTES:

- DENOTES PERMANENT REFERENCE MONUMENT.
- DENOTES PERMANENT CONTROL POINT.

ALL BEARINGS SHOWN HEREON ARE RELATIVE TO AN ASSUMED MERIDIAN USED THROUGHOUT WELLINGTON - P. U. D. THE NORTH LINE OF SECTION 16-44-41 IS ASSUMED TO BEAR SOUTH 89°44'02" EAST.

BUILDING SETBACK LINES SHALL BE AS REQUIRED BY PALM BEACH COUNTY ZONING REGULATIONS.

THERE SHALL BE NO BUILDINGS OR ANY KIND OF CONSTRUCTION PLACED ON UTILITY, DRAINAGE, OR WATER AND SEWER EASEMENTS. CONSTRUCTION OR LANDSCAPING UPON LAKE MAINTENANCE OR LAKE ACCESS EASEMENTS MUST BE IN CONFORMANCE WITH ORDINANCE 86-21 AND ALL OTHER BUILDING AND ZONING CODES AND/OR ORDINANCES OF PALM BEACH COUNTY.

THERE SHALL BE NO TREES OR SHRUBS PLACED ON UTILITY EASEMENTS WHICH ARE PROVIDED FOR WATER AND SEWER USE OR UPON DRAINAGE EASEMENTS. LANDSCAPING ON OTHER UTILITY EASEMENTS SHALL BE ALLOWED ONLY AFTER CONSENT OF ALL UTILITY COMPANIES OCCUPYING SAME.

EASEMENTS ARE FOR PUBLIC UTILITIES, WATER AND SEWER UNLESS OTHERWISE NOTED.

WHERE UTILITY AND DRAINAGE EASEMENTS CROSS, DRAINAGE EASEMENTS SHALL TAKE PRECEDENCE.

DEDICATIONS TO THE STONEGATE HOMEOWNERS ASSOCIATION, INC. ARE NOT INTENDED TO CREATE ANY RIGHTS IN FAVOR OF THE GENERAL PUBLIC.

THERE MAY BE ADDITIONAL RESTRICTIONS THAT ARE NOT RECORDED ON THIS PLAT THAT MAY BE FOUND IN THE PUBLIC RECORDS OF THIS COUNTY.

LINE SHOWN HEREON ARE NON-RADIAL, UNLESS LABELED (RADIAL).

MAINTAINED BY ACME IMPROVEMENT DISTRICT LAKE & WATER MANAGEMENT TRACT A

GREENVIEW SHORES BOULEVARD

PLATTED AS LAKE WORTH ROAD PER GREENVIEW SHORES NO. 2 OF WELLINGTON P. U. D., PLAT BOOK 31, PGS. 120-136 INCL.

GREENVIEW SHORES NO. 2 OF WELLINGTON - (P. U. D.) (P. B. 31, PGS. 120-136)

GREENVIEW SHORES NO. 2 OF WELLINGTON - (P. U. D.) (P. B. 31, PGS. 120-136)

STONEGATE OF WELLINGTON - P. U. D.

Dailey-Fotopay, Inc.
 LAND SURVEYORS, PLANNERS, ENGINEERS
 1000 AVENUE NORTH, SUITE 200 - LAKE WORTH, FLORIDA 33462
 PHONE 334-822-2222

SUBMISSION TO STONEGATE OF WELLINGTON
 BOOK 2 - PAGE 185
 FLOOD MAP 100-B
 ZONING A2-86-32
 QUAD 77
 ZIP CODE 33443
 FILE NO. 782728
 FILED NAME STONEGATE OF WELLINGTON

NO. BY
 CHECKED BY

ACME DRAINAGE DISTRICT CANAL R/W C-18

Pet. 86-32

62/185