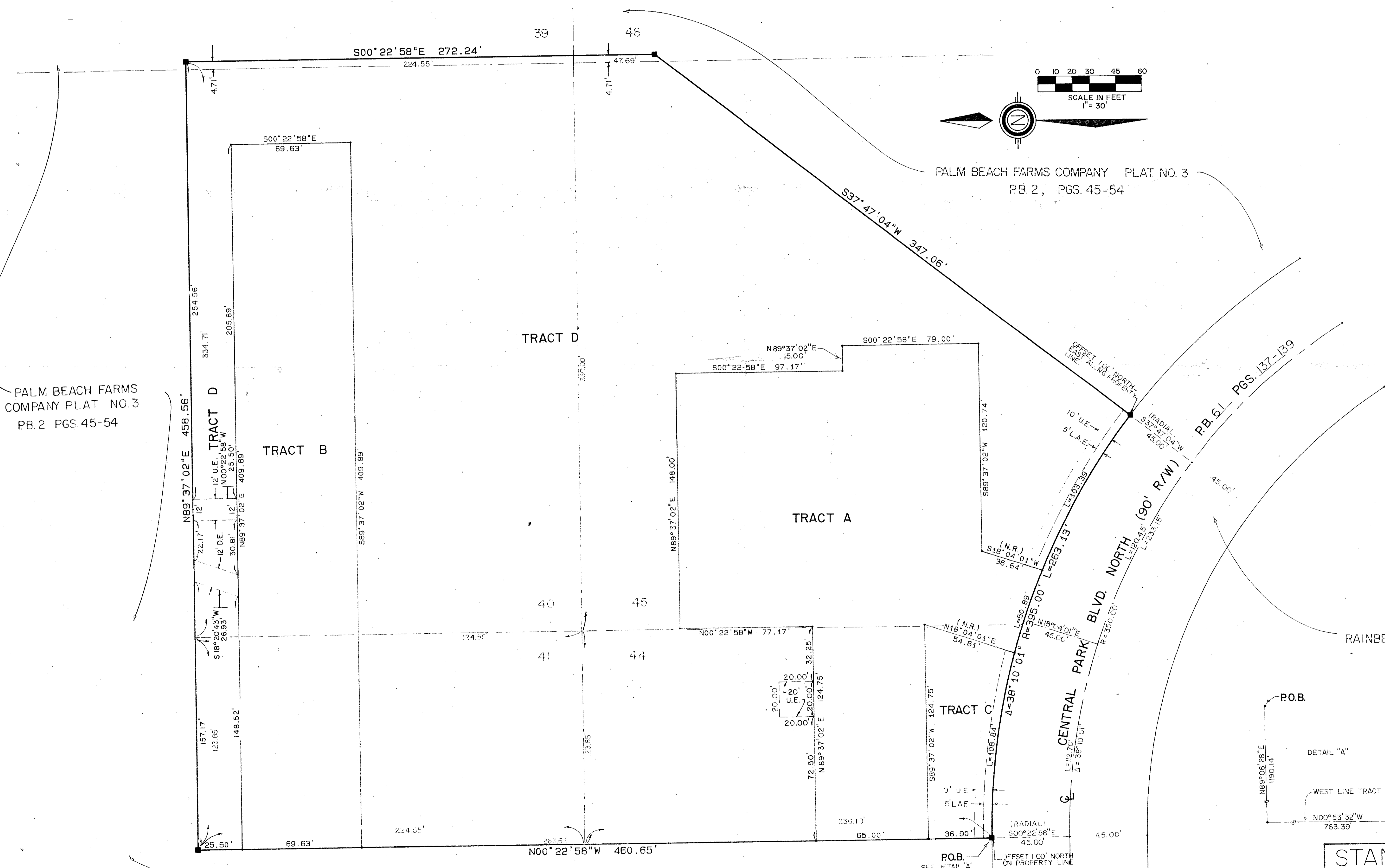


MENORAH HOUSE
 PART OF "RAINBERRY OF WEST BOCA MEDICAL CENTER"
 SITUATE IN SECTION 19, TOWNSHIP 47 SOUTH, RANGE 42 EAST, PALM BEACH
 COUNTY, FLORIDA, BEING A REPLAT OF A PORTION OF BLOCK 78, OF
 THE PALM BEACH FARMS COMPANY PLAT NO. 3 (PB. 2, PGS. 45-54)
 1989 SHEET 2 OF 2

STATE OF FLORIDA
 COUNTY OF PALM BEACH
 THIS PLAT WAS FILED FOR
 RECORD AT _____
 THIS _____ DAY OF _____
 AD, 1989 AND DULY RECORDED
 IN PLAT BOOK _____ ON PAGES
 _____ AND _____
 JOHN B. DUNKLE, CLERK
 BY: _____, D.C.



PALM BEACH FARMS
 COMPANY PLAT NO. 3
 PB. 2 PGS. 45-54

PALM BEACH FARMS
 COMPANY PLAT NO. 3
 PB. 2 PGS. 45-54

RAINBERRY WEST OF BOCA PLAT NO. 1
 PB. 6L PGS. 137-139

P.O.C.
 SW CORNER OF TRACT 71 OF BLOCK
 PALM BEACH FARMS COMPANY'S PLAT NO. 3
 PB. 2, PGS. 45-54

STANLEY/WANTMAN, INC.
 2000 LOMBARD STREET, WEST PALM BEACH, FL 33407 (407) 842-7444

DRAWN	JLB	DATE	OCT. 1987
CHECKED	C.F.P.	SCALE	1" = 30'
DRAWING NO	09474PL		

MENORAH HOUSE
 PART OF THE RAINBERRY
 OF WEST BOCA MEDICAL
 CENTER

0561-002
 Pt. 83-56

~~0372-003~~
~~Pt. 84-159~~

63/15

Menorah House
 15
 2508
 RM 24-139
 33433
 54
 783

Palm Survey Comments 1-27-89 MHC