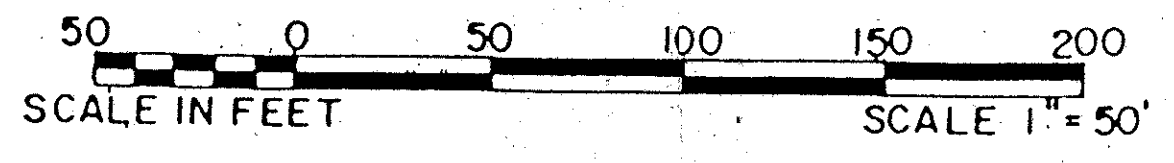


# LAKEFIELD OF THE LANDINGS AT WELLINGTON P.U.D. - PLAT 1

BEING THE ABANDONED NORTH CLUB DRIVE AND SOUTH CLUB ROAD, A PORTION OF AERO CLUB DRIVE OF THE LANDINGS, AT WELLINGTON P.U.D., RECORDED IN PLAT BOOK 53, PAGES 159 AND 160 OF THE PUBLIC RECORDS OF PALM BEACH COUNTY, FLORIDA AND OTHER LANDS.

IN PART OF SECTION 7, TOWNSHIP 44 SOUTH, RANGE 41 EAST  
 PALM BEACH COUNTY, FLORIDA  
 IN SEVEN SHEETS SHEET NO. 2

GEE & JENSON  
 ENGINEERS - ARCHITECTS - PLANNERS, INC.  
 WEST PALM BEACH, FLORIDA  
 AUGUST 1988

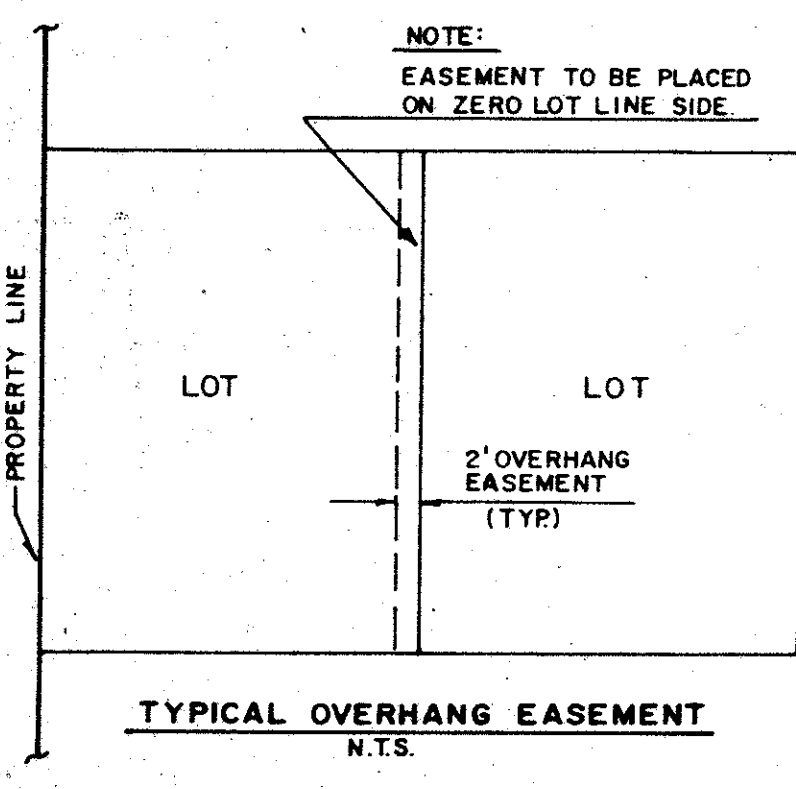
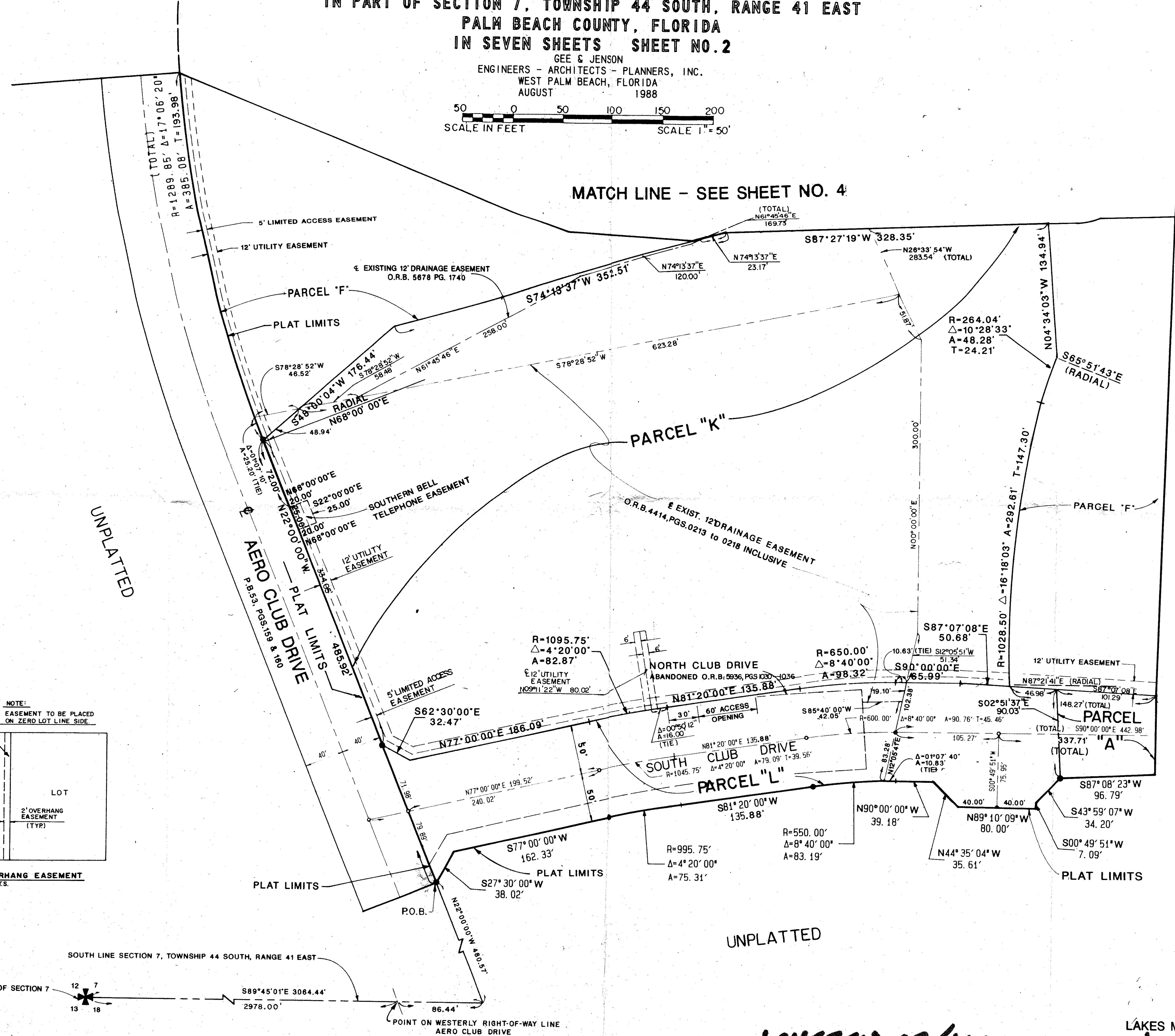
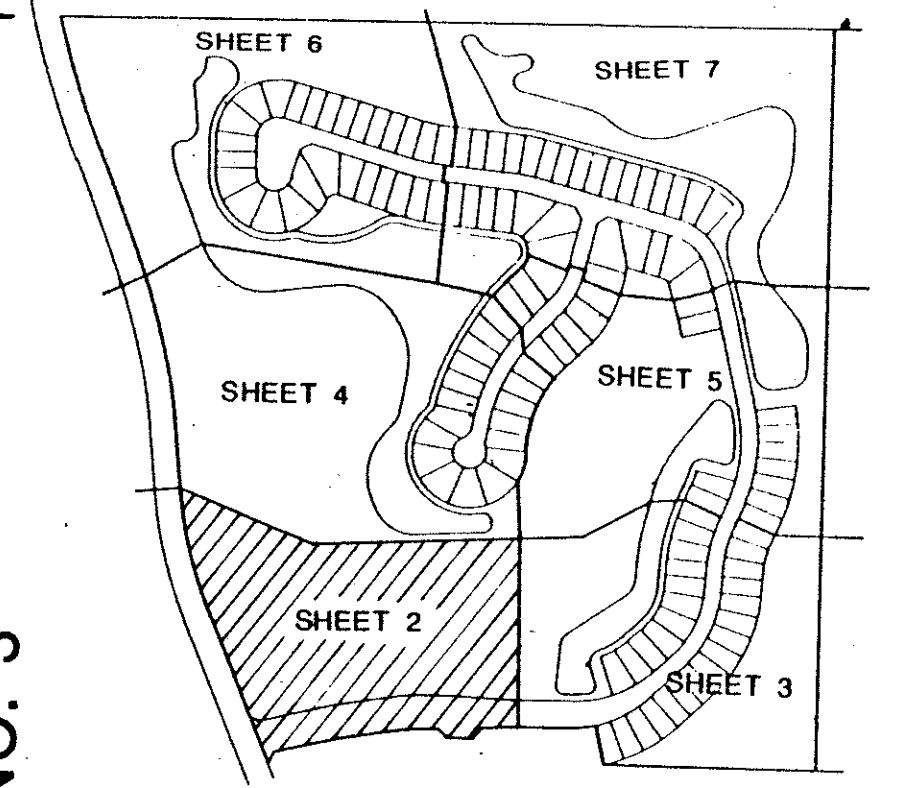


0269-004

21

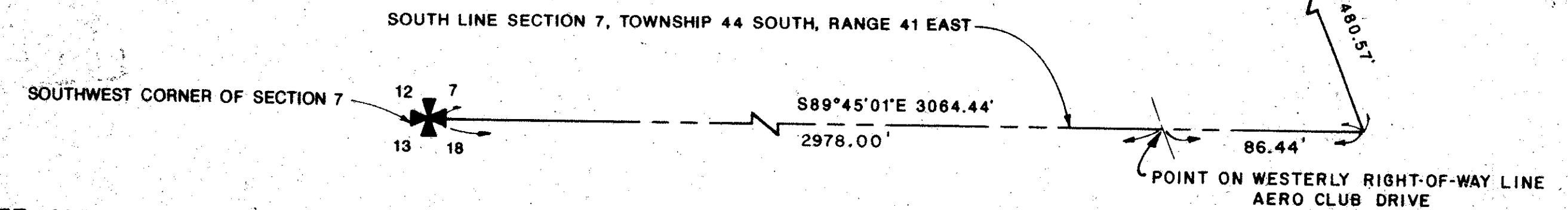
STATE OF FLORIDA  
 COUNTY OF PALM BEACH  
 This plat was filed for record at \_\_\_\_\_ M, this \_\_\_\_\_ day of \_\_\_\_\_ 1988, and duly recorded in Plat Book No. \_\_\_\_\_ on Pages \_\_\_\_\_ thru \_\_\_\_\_.

JOHN B. DUNKLE  
 Clerk Circuit Court  
 By: \_\_\_\_\_ D.C.



Subdivision: Lakefield of the Landings at Wellington PUD  
 Book: 53 Page: 21  
 RE: 78-287  
 ZIP CODE: 33414  
 PUD NAME: Lakefield of the Landings P.U.D.

COMPUTED: DNL/CAD  
 DRAWN: DNL/CAD  
 CHECKED: JLD  
 APPROVED: JLD



NOTE: ALL LINES ARE NON-RADIAL UNLESS OTHERWISE NOTED

MATCH LINE - SEE SHEET NO. 3

UNPLATTED

0269-004  
 Pet. 78-287

63/21

LAKE MAINTAINED BY: FOURTH WELLINGTON, INC.

LAKEFIELD OF THE LANDINGS AT WELLINGTON - PLAT 1