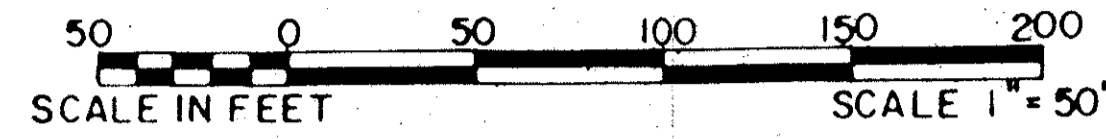


LAKEFIELD OF THE LANDINGS AT WELLINGTON P.U.D. - PLAT 1

BEING THE ABANDONED NORTH CLUB DRIVE AND SOUTH CLUB ROAD, A PORTION OF AERO CLUB DRIVE OF THE LANDINGS, AT WELLINGTON P.U.D., RECORDED IN PLAT BOOK 53, PAGES 159 AND 160 OF THE PUBLIC RECORDS OF PALM BEACH COUNTY, FLORIDA AND OTHER LANDS.

IN PART OF SECTION 7, TOWNSHIP 44 SOUTH, RANGE 41 EAST
PALM BEACH COUNTY, FLORIDA
IN SEVEN SHEETS SHEET NO. 5

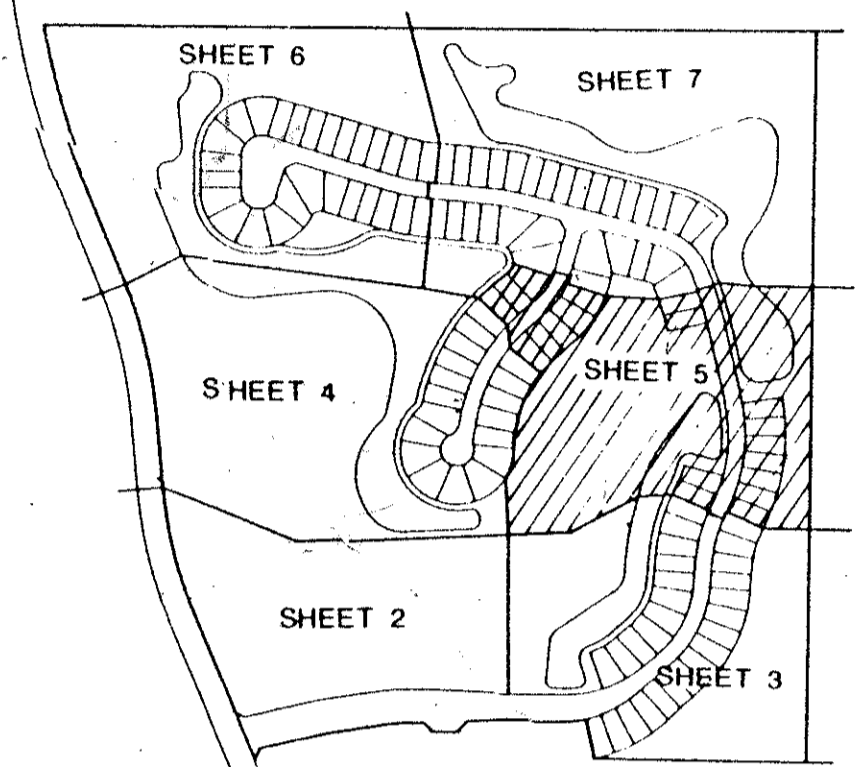
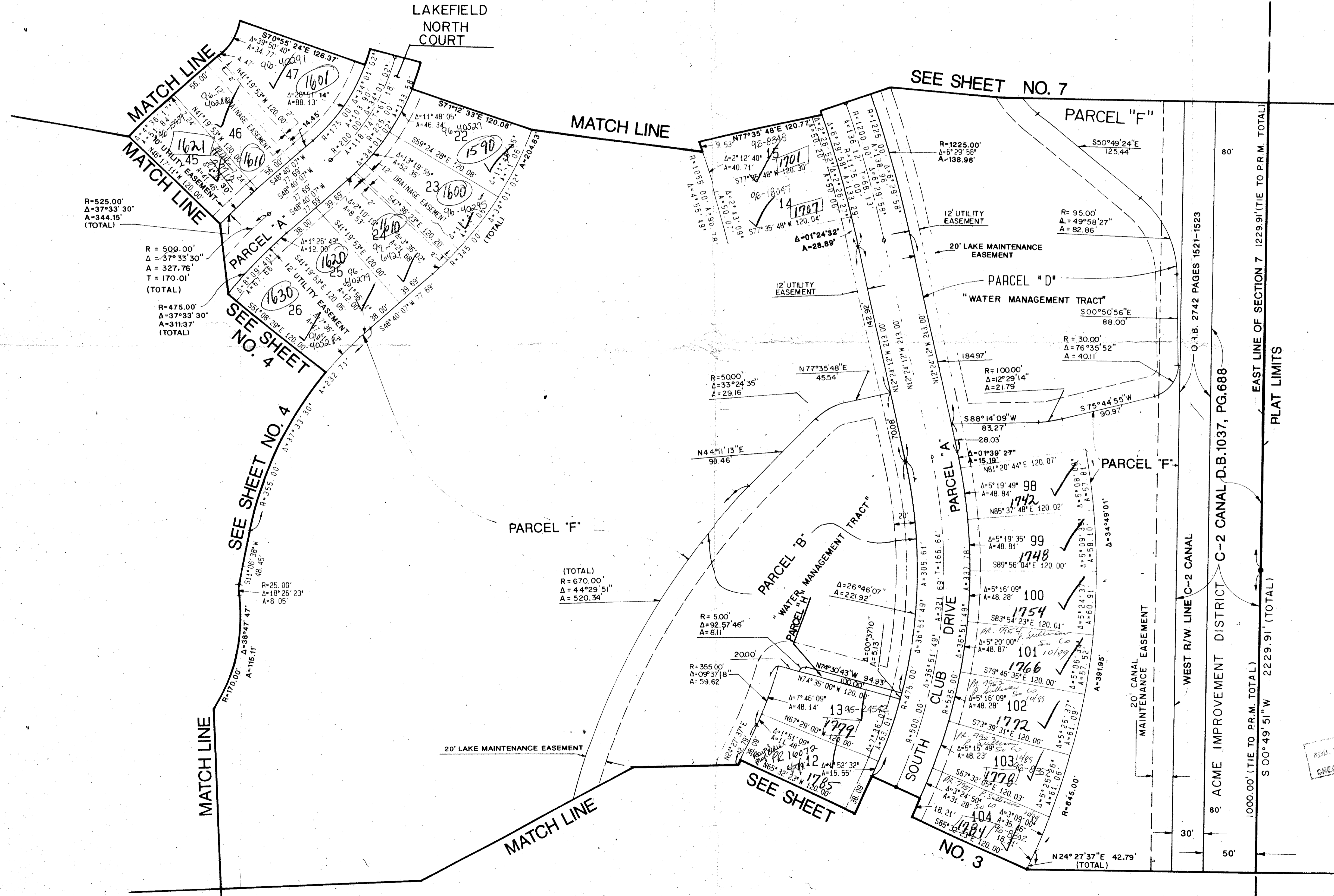
GEE & JENSON
ENGINEERS - ARCHITECTS - PLANNERS, INC.
WEST PALM BEACH, FLORIDA
AUGUST 1988



0269-004

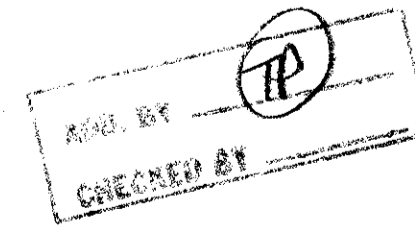
24

STATE OF FLORIDA
COUNTY OF PALM BEACH
This plat was filed for
record at _____ M. this _____ day
of _____ 1989, and duly
recorded in Plat Book No. _____
on Pages _____ thru _____
JOHN B. DUNKLE
Clerk Circuit Court
By: _____ D.C.



SURVEYED & PLATTED AT WELLINGTON P.U.D. AREA
BY: G.B. B. 77
DATE: 10/06/88
RE: 78-287
35414
SIGNED: [Signature]
T.A.Z. 727

COMPUTED DWL/CAD
DRAWN DWL/CAD
CHECKED JHB
APPROVED [Signature]



0269-004
Pet. 78-287

63/24

LAKE MAINTAINED BY: FOURTH WELLINGTON, INC.

LAKEFIELD OF THE LANDINGS AT WELLINGTON-PLAT 1

NOTE: ALL LINES ARE NON-RADIAL UNLESS OTHERWISE NOTED