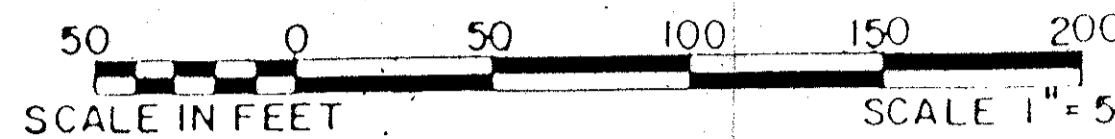


LAKEFIELD OF THE LANDINGS AT WELLINGTON P.U.D. - PLAT 1

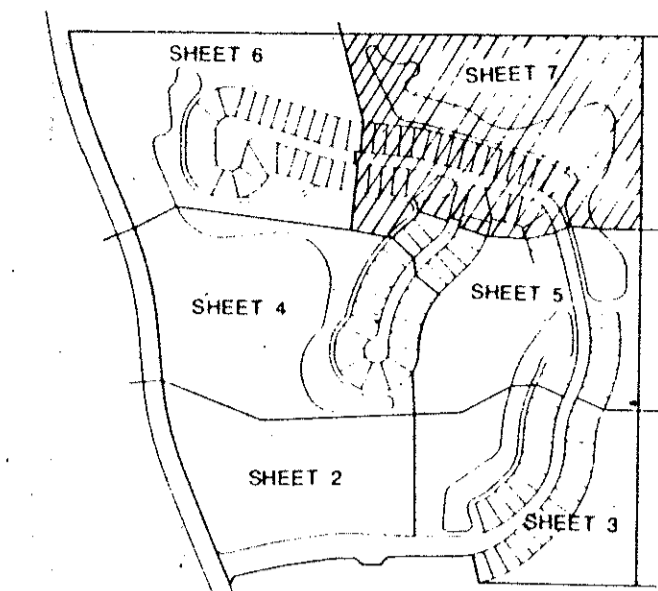
BEING THE ABANDONED NORTH CLUB DRIVE AND SOUTH CLUB ROAD, A PORTION OF AERO CLUB DRIVE OF THE LANDINGS, AT WELLINGTON P.U.D., RECORDED IN PLAT BOOK 53, PAGES 159 AND 160 OF THE PUBLIC RECORDS OF PALM BEACH COUNTY, FLORIDA AND OTHER LANDS.

IN PART OF SECTION 7, TOWNSHIP 44 SOUTH, RANGE 41 EAST
PALM BEACH COUNTY, FLORIDA
IN SEVEN SHEETS SHEET NO. 7

GEE & JENSON
ENGINEERS - ARCHITECTS - PLANNERS, INC.
WEST PALM BEACH, FLORIDA
AUGUST 1988

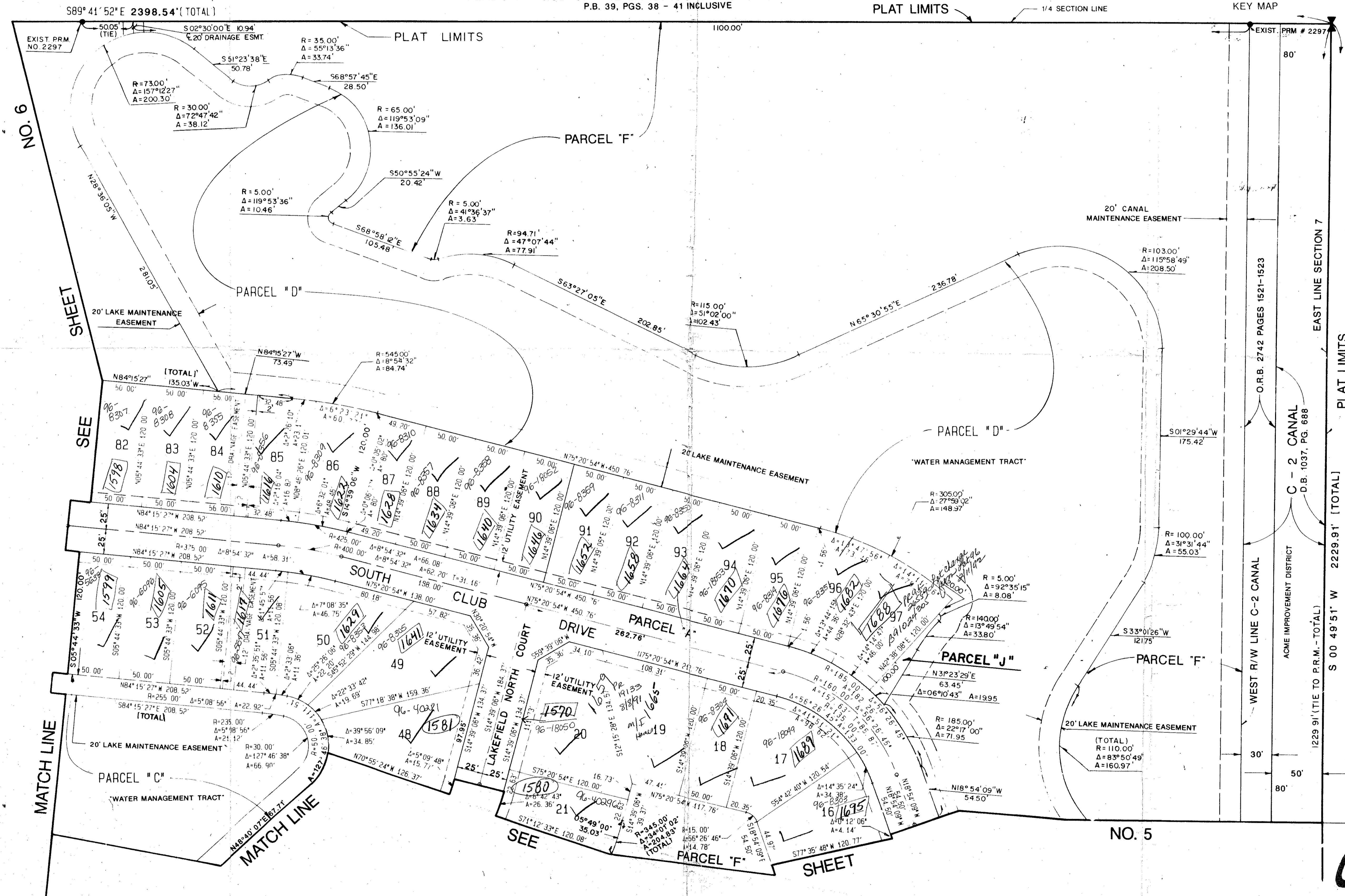


MEADOW WOOD OF THE LANDINGS AT WELLINGTON-P.U.D.
P.B. 39, PGS. 38 - 41 INCLUSIVE



26

STATE OF FLORIDA
COUNTY OF PALM BEACH
This plat was filed for record at _____ M. this _____ day of _____ 1988, and duly recorded in Plat Book No. _____ on Pages _____ thru _____
JOHN B. DUNKLE
Clerk Circuit Court
By: _____ D.C.



SUBDIVISION - Lakefield of the Landings at Wellington P.U.D.
BOOK 63
PAGE 26
FLOOR PLAN # 1008B
QUAD # 777
ZONING RE 78-287
TAX 727
PUD CODE 57414

COMPUTED DWL/CAD
DRAWN DWL/CAD
CHECKED J.H.D.
APPROVED J.H.D.

NOTE: ALL LINES ARE NON-RADIAL UNLESS OTHERWISE NOTED

LAKEFIELD OF THE LANDINGS AT WELLINGTON PLAT 1

0269-004
Pet. 78-287
63/26

LAKES MAINTAINED BY: FOURTH WELLINGTON, INC.