

# LAKEFIELD OF THE LANDINGS AT WELLINGTON P.U.D. - PLAT 2B

IN PART OF SECTION 18, TOWNSHIP 44 SOUTH, RANGE 41 EAST  
 PALM BEACH COUNTY, FLORIDA  
 IN FIVE SHEETS SHEET NO. 4

GEE & JENSON  
 ENGINEERS - ARCHITECTS - PLANNERS, INC.  
 WEST PALM BEACH, FLORIDA  
 AUGUST 1988

0269-005

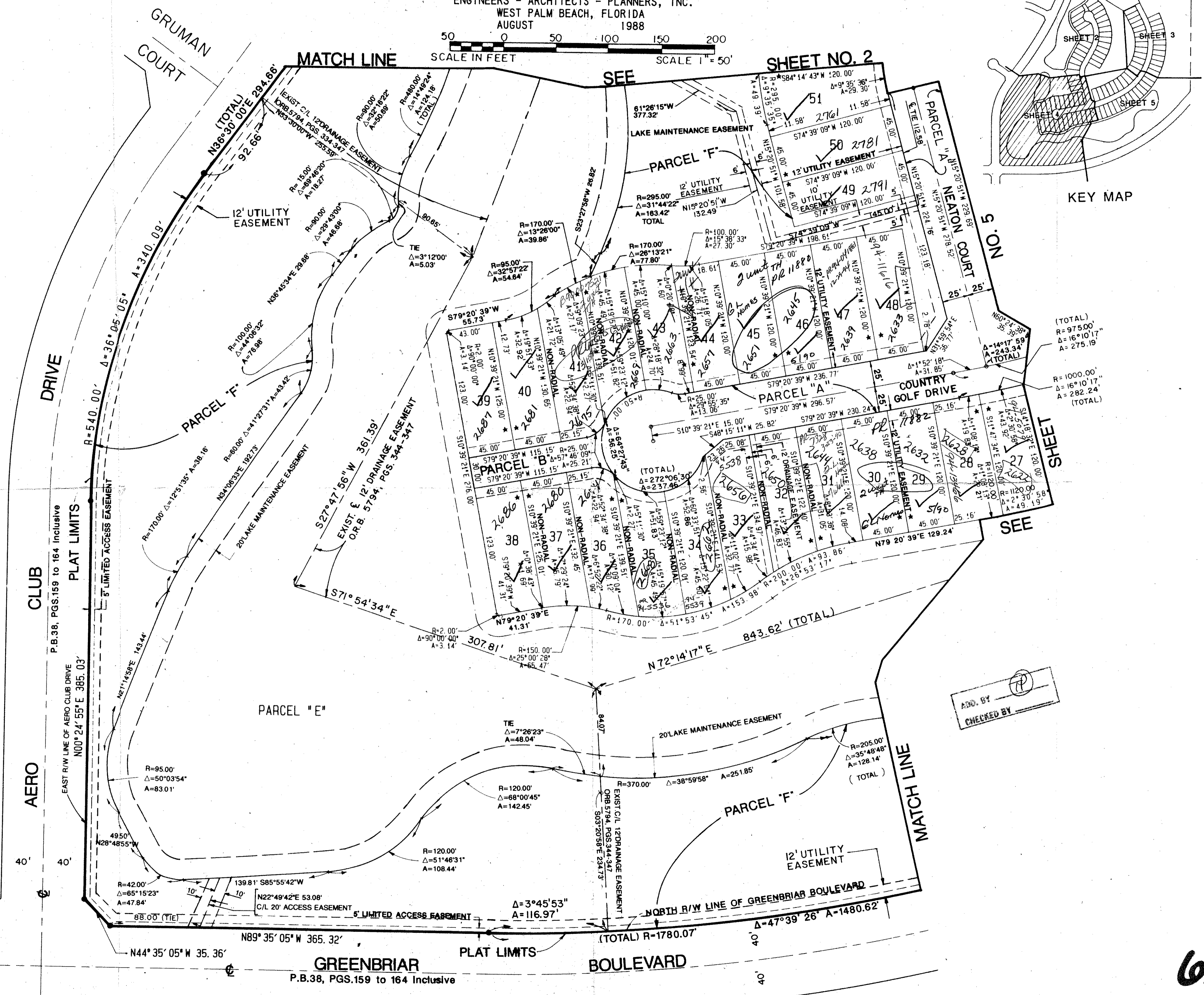
30

STATE OF FLORIDA  
 COUNTY OF PALM BEACH  
 This plat was filed for  
 record at        M. this        day  
 of        1988, and duly  
 recorded in Plat Book No.         
 on Pages        thru       .  
 JOHN B. DUNKLE  
 Clerk Circuit Court  
 By:                      D.C.

WELLINGTON AERO CLUB OF THE LANDINGS AT WELLINGTON-P.U.D.  
 P.B. 38, PGS. 159 TO 164 INCLUSIVE

Subdivision of the 100 B  
 Book 03 of Wellington P.U.D. Plat 2B  
 Quad 77  
 RE 78-287  
 TAZ 728  
 33411

COMPUTED DWL/KAP  
 DRAWN DWL/KAP  
 CHECKED JLD  
 APPROVED JLD



0269-005  
 Plat. 78-287

63/30

\* - INDICATES ZERO LOT LINE  
 NOTE: ALL LINES ARE RADIAL UNLESS OTHERWISE NOTED

LAKEFIELD OF THE LANDINGS AT WELLINGTON-PLAT 2B