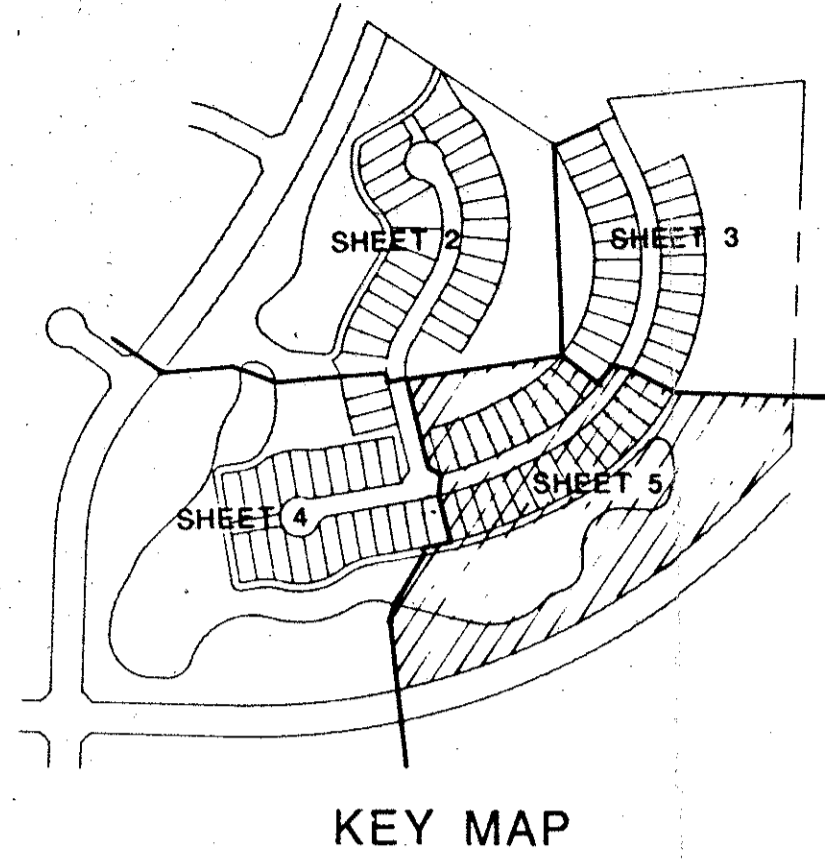


# LAKEFIELD OF THE LANDINGS AT WELLINGTON P.U.D. - PLAT 2B

IN PART OF SECTION 18, TOWNSHIP 44 SOUTH, RANGE 41 EAST  
 PALM BEACH COUNTY, FLORIDA  
 IN FIVE SHEETS SHEET NO. 5

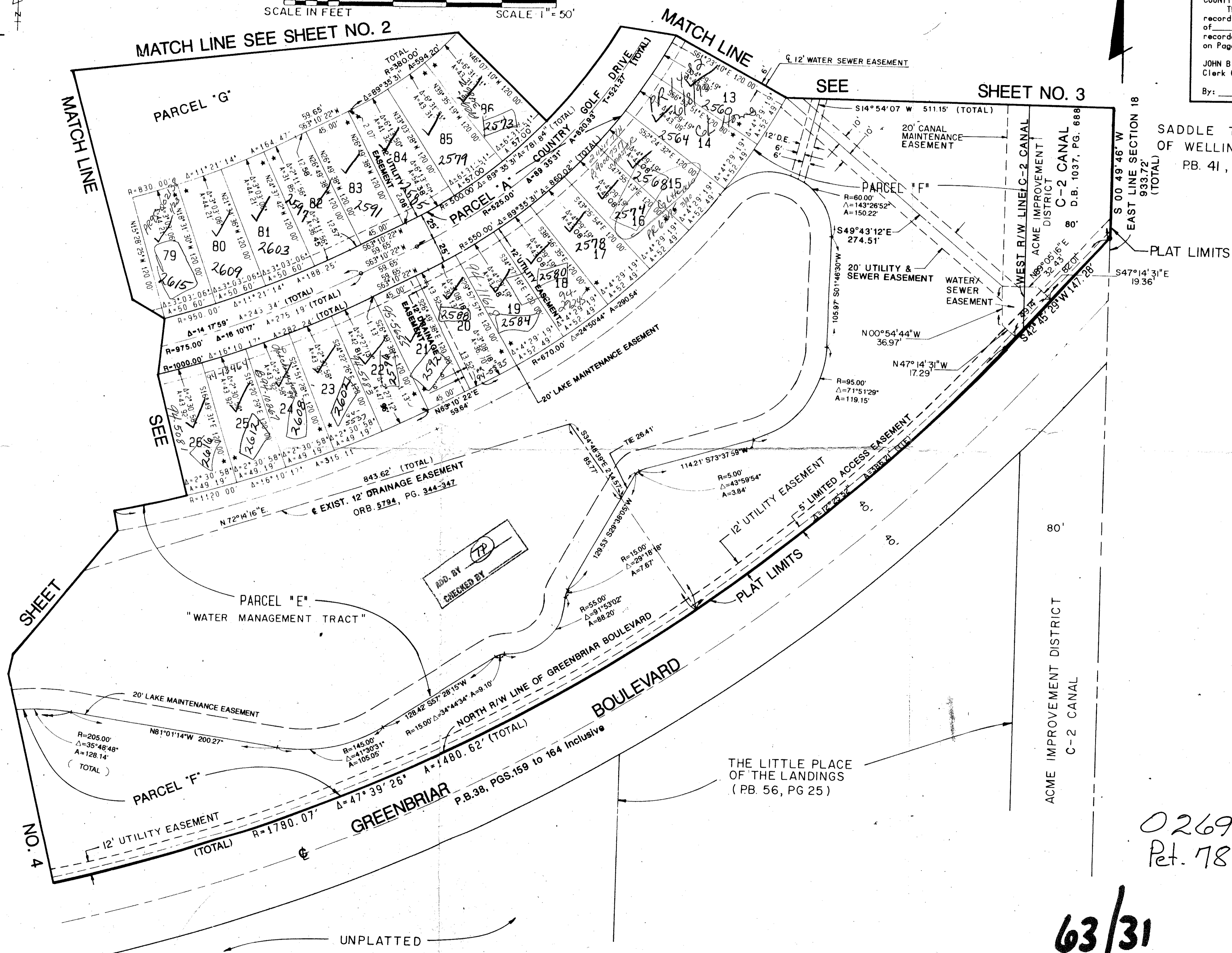
GEE & JENSON  
 ENGINEERS - ARCHITECTS - PLANNERS, INC.  
 WEST PALM BEACH, FLORIDA  
 AUGUST 1988

SCALE IN FEET SCALE 1" = 50'



31

STATE OF FLORIDA  
 COUNTY OF PALM BEACH  
 This plat was filed for  
 record at \_\_\_\_\_ M. this \_\_\_\_\_ day  
 of \_\_\_\_\_ 1988, and duly  
 recorded in Plat Book No. \_\_\_\_\_  
 on Pages \_\_\_\_\_ thru \_\_\_\_\_  
 JOHN B. DUNKLE  
 Clerk Circuit Court  
 By: \_\_\_\_\_ D.C.



Subdivision of the Landings  
 at Wellington P.U.D. Plat 2B  
 BOOK 63 PAGE 31  
 FLOOD ZONE B 140 FLOOD MAP # 1000  
 QUAD # 77 ZONING RS 78-287  
 # 77 ZONING RS 78-287  
 PUD NAME LAKEFIELD OF THE LANDINGS  
 # 77 ZONING RS 78-287

COMPUTED P.W.L./C.A.O.  
 DRAWN P.W.L./C.A.O.  
 CHECKED J.D.  
 APPROVED J.D.

\* = INDICATES ZERO LOT LINE  
 NOTE: ALL LINES ARE RADIAL UNLESS OTHERWISE NOTED !

0269-005  
 Plat. 78-287

63/31