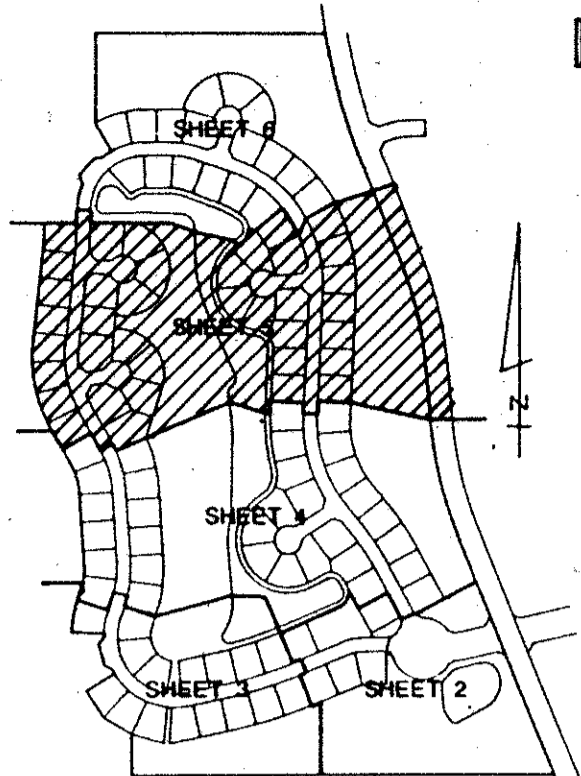
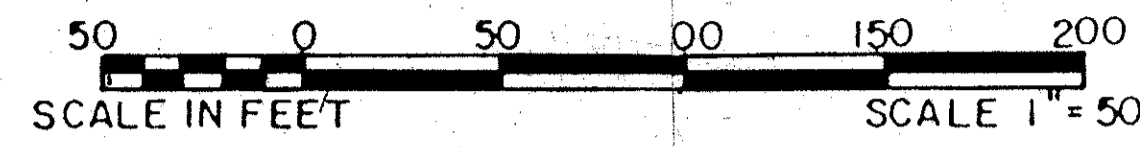


LAKEFIELD OF THE LANDINGS AT WELLINGTON P.U.D. - PLAT 3A

IN PART OF SECTION 7, TOWNSHIP 44 SOUTH, RANGE 41 EAST
 PALM BEACH COUNTY, FLORIDA
 IN SIX SHEETS SHEET NO. 5

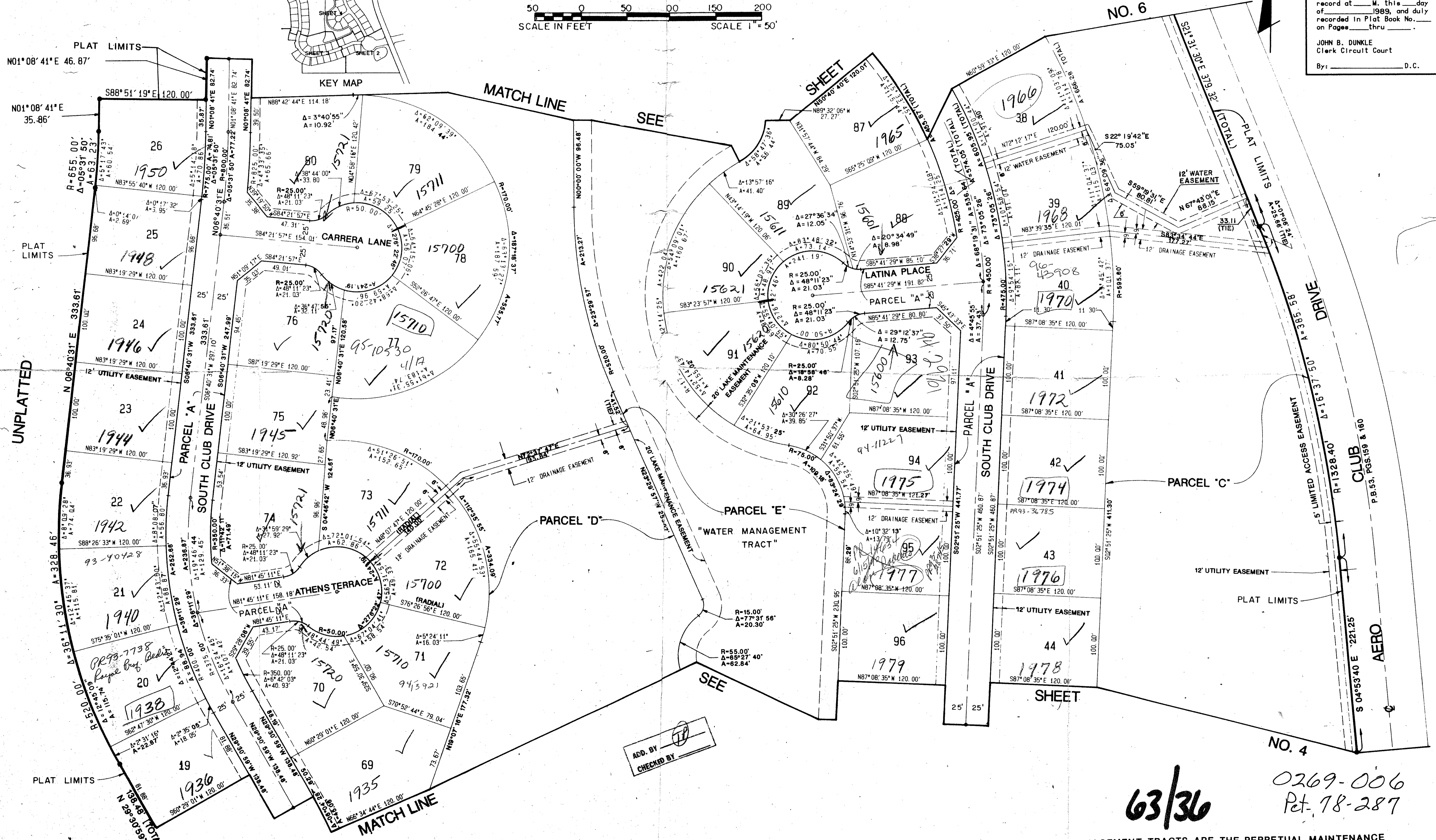
GEE & JENSON
 ENGINEERS - ARCHITECTS - PLANNERS, INC.
 WEST PALM BEACH, FLORIDA
 AUGUST 1988



36

STATE OF FLORIDA
 COUNTY OF PALM BEACH
 This plat was filed for
 record at _____ M. this _____ day
 of _____ 1989, and duly
 recorded in Plat Book No. _____
 on Pages _____ thru _____.

JOHN B. DUNKLE
 Clerk Circuit Court
 By: _____ D.C.



Left of the Landings at Well
 SUBMISSION P.U.D. Plat 3B
 BOOK 65 PAGE 36
 FLOOD MAP RE 78-287
 TAZ 727
 PUD NAME Sams, O.S. Sub. 1988

COMPUTED D.W.L./C.A.D.
 DRAWN D.W.L./C.A.D.
 CHECKED [Signature]
 APPROVED [Signature]
 REVISION

NOTE: ALL LINES ARE NON RADIAL UNLESS OTHERWISE NOTED

WATER MANAGEMENT TRACTS ARE THE PERPETUAL MAINTENANCE OBLIGATION OF THE LAKEFIELD WEST HOMEOWNERS' ASSOCIATION, INC.
LAKEFIELD OF THE LANDINGS AT WELLINGTON - PLAT 3A

63/36
 0269-006
 Plat. 78-287

ADD. BY
 CHECKED BY