

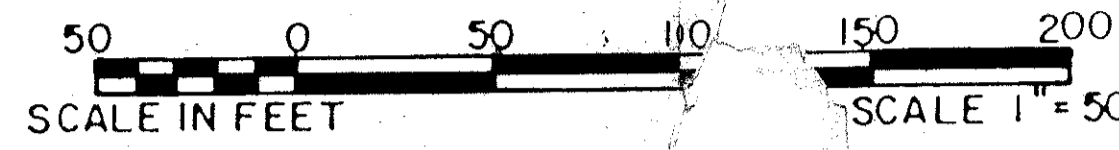
# LAKEFIELD OF THE LANDINGS AT WELLINGTON P.U.D. - PLAT 3A

IN PART OF SECTION 7, TOWNSHIP 44 SOUTH, RANGE 41 EAST

PALM BEACH COUNTY, FLORIDA

IN SIX SHEETS SHEET NO. 6

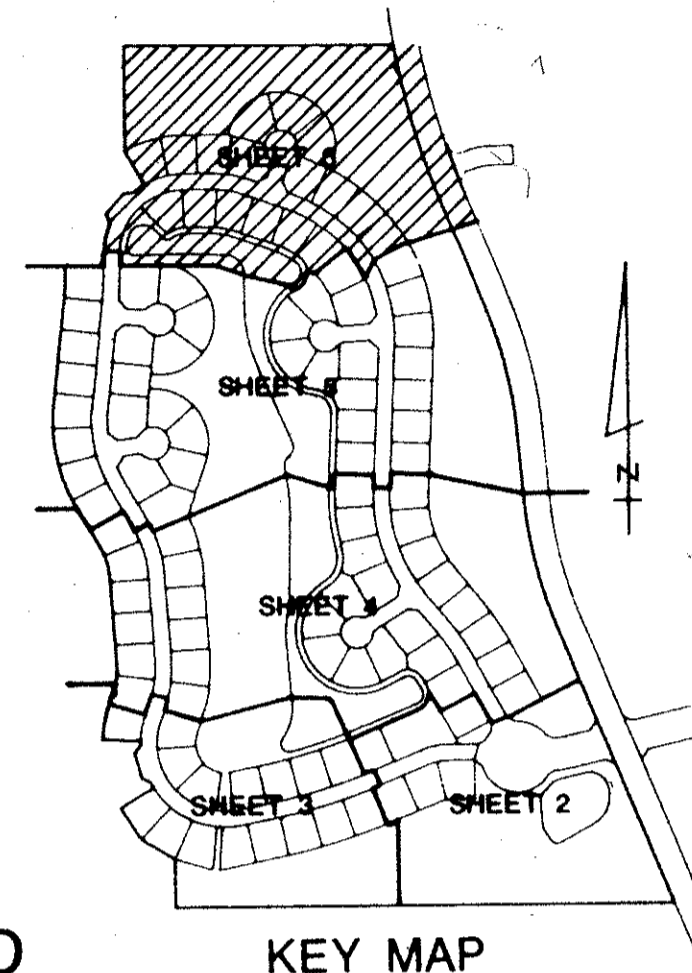
GEE & JENSON  
ENGINEERS - ARCHITECTS - PLANNERS, INC.  
WEST PALM BEACH, FLORIDA  
AUGUST 1988



MEADOW WOOD  
P.B. 39, PGS. 38-41 INCLUSIVE

37

STATE OF FLORIDA  
COUNTY OF PALM BEACH  
This plat was filed for  
record at \_\_\_\_\_ M. this \_\_\_\_\_ day  
of \_\_\_\_\_ 1988, and duly  
recorded in Plat Book No. \_\_\_\_\_  
on Pages \_\_\_\_\_ thru \_\_\_\_\_.  
JOHN B. DUNKLE  
Clerk Circuit Court  
By: \_\_\_\_\_ D.C.

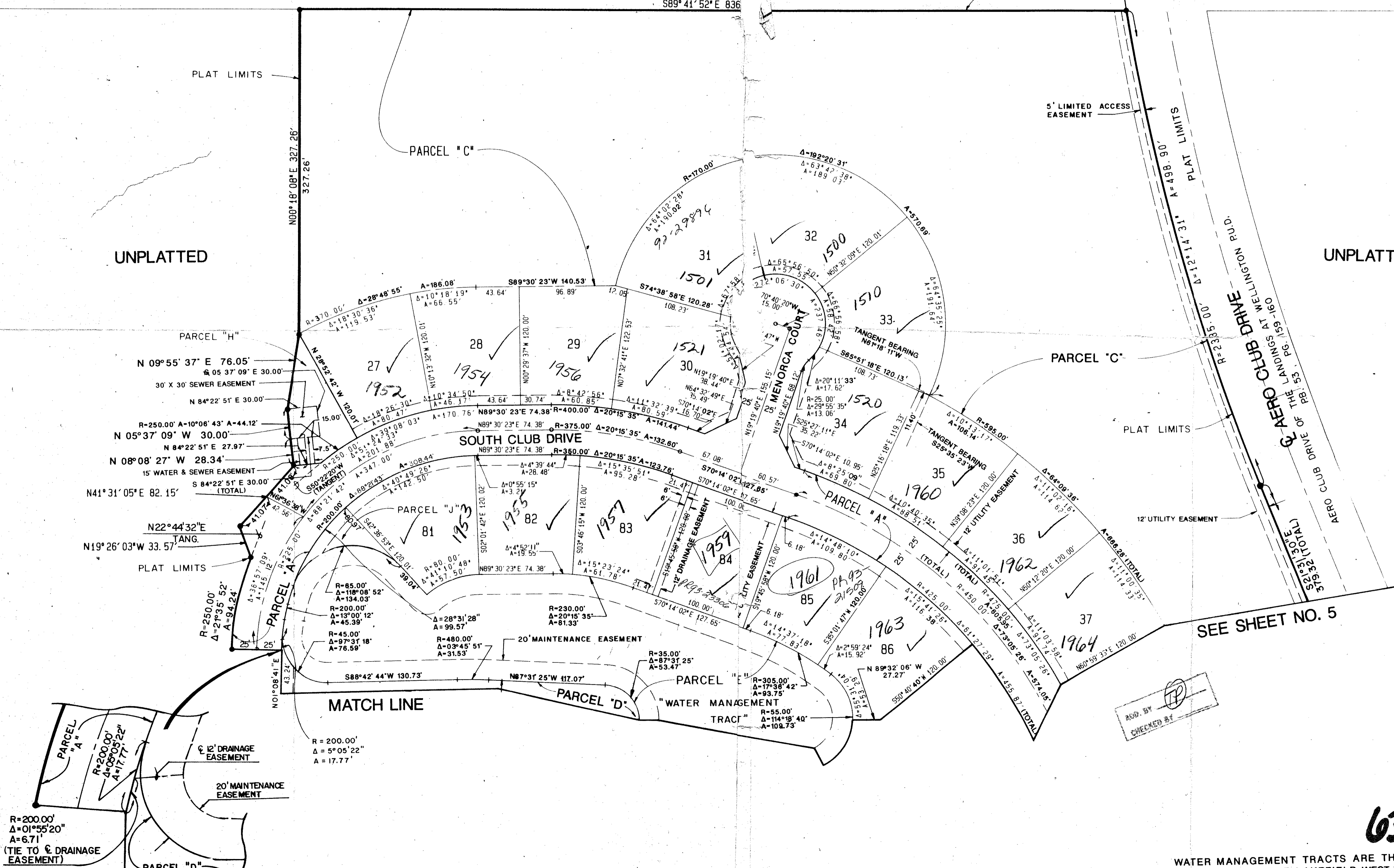


UNPLATTED

UNPLATTED

LAKEFIELD OF THE LANDINGS AT  
SUBDIVISION # Wellington P.U.D. Plat 3A  
BOOK 03 PAGE 77 B RE 78-287  
TAZ 727  
Sams Co Sub

COMPUTED DWL/KAD  
DRAWN DWL/KAD  
CHECKED JAD  
APPROVED JAD  
REVISION



PARCEL "A"  
R=200.00'  
Δ=01°55'20"  
A=6.71'  
(TIE TO 1/2" DRAINAGE EASEMENT)

DETAIL

NOTE: ALL LINES ARE NON-RADIAL UNLESS OTHERWISE NOTED!

SEE SHEET NO. 5

ROAD BY  
CHECKED BY

0269-006  
Pet. 78-287

63/37

LAKEFIELD OF THE LANDINGS AT WELLINGTON - PLAT 3A

WATER MANAGEMENT TRACTS ARE THE PERPETUAL MAINTENANCE TRACTS OF THE LAKEFIELD WEST HOMEOWNERS ASSOCIATION